

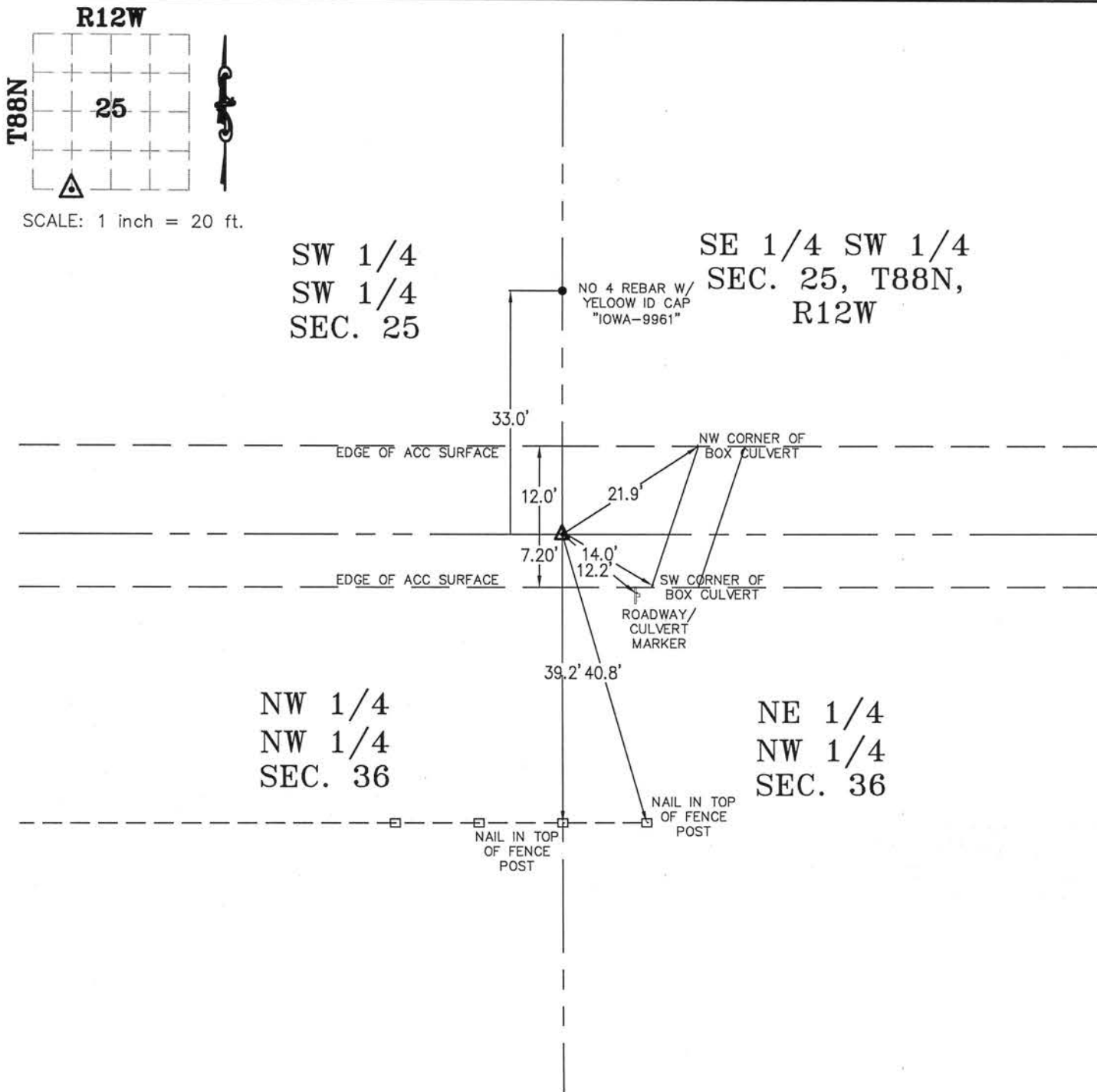
Kirk D. Eschliman, P.L.S. Iowa Lic. No. 9961, 819 Sycamore Street, Waterloo, Iowa 50703-4729 - Phone: 319-234-0509

UNITED STATES PUBLIC LAND SURVEY CORNER CERTIFICATE OF  
LAND SURVEY MONUMENTS SITUATED IN SECTION 25, TOWNSHIP 88 NORTH, RANGE 12 WEST, OF THE FIFTH PRINCIPAL  
MERIDIAN, BLACK HAWK COUNTY, IOWA.

(SHOW REASON FOR PREPARING THIS CERTIFICATE, THE EVIDENCE AND DETAILED PROCEDURES USED IN ESTABLISHING THE CORNER POSITIONS AND  
MONUMENTATION FOUND OR PLACED.)

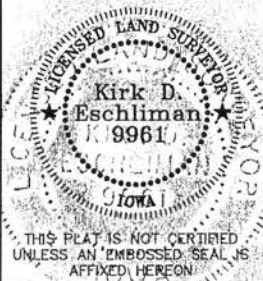
MONUMENT DESCRIPTION AND REMARKS:

NO RECORD OF MONUMENT BEING SET. NO MONUMENT WAS FOUND. SET NO. 5 REBAR WITH ALUM. ID CAP STAMPED  
"KESS&ASSOCIATES" MONUMENT WAS SET ON THE SOUTH LINE OF SW 1/4 OF SECTION 25, T88N, R12W, MIDWAY  
BETWEEN SW COR. AND S. 1/4.



I HEREBY CERTIFY THAT THIS LAND SURVEYING DOCUMENT  
WAS PREPARED AND THE RELATED SURVEY WORK WAS  
PERFORMED BY ME OR UNDER MY DIRECT PERSONAL  
SUPERVISION AND THAT I AM A DULY LICENSED LAND  
SURVEYOR UNDER THE LAWS OF THE STATE OF IOWA.

*[Signature]* DATE: 06/03/2013  
KIRK D. ESCHLIMAN, P.L.S. IOWA LIC. NO. 9961  
MY LICENSE RENEWAL DATE IS DECEMBER 31, 2013  
PAGES OR SHEETS COVERED BY THIS SIGNATURE & SEAL: SHEET 1 OF 1



LIST OF CORNERS TO BE INDEXED:

CORNER	SEC.	TWP	RANGE
SW COR	25	88	12
SE 1/4			
SW 1/4			

KESS & ASSOCIATES, INC.  
819 SYCAMORE ST., WATERLOO, IOWA 50703-4729 PHONE: (319) 234-0509

DATE OF FIELD WORK: 12/03/2012  
DWG. DATE: 12/03/2012 DRAWN BY: CJP  
CADD FILE: 12A51.SCTIESDWG PROJECT NO.: 12A51