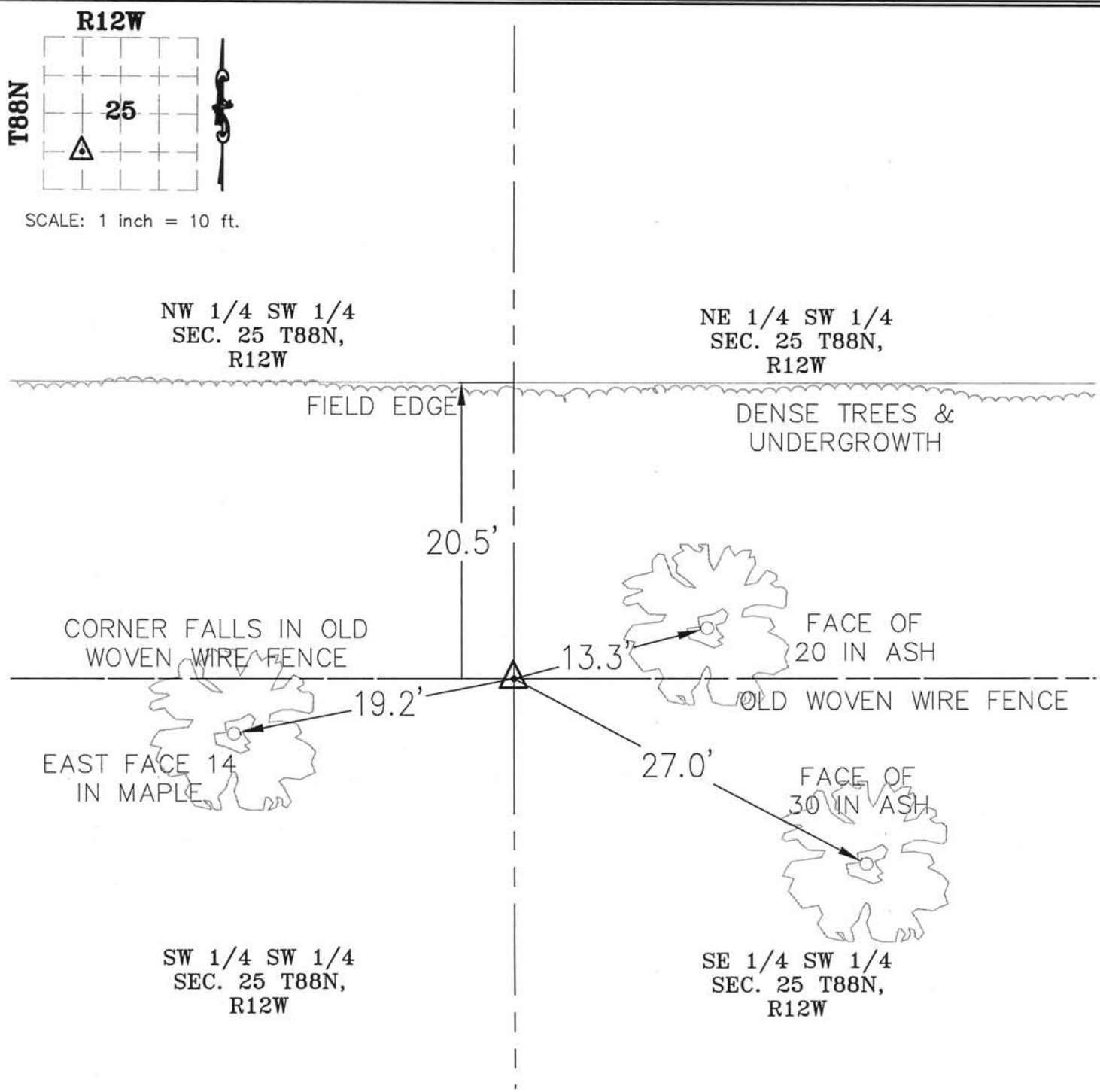


Kirk D. Eschliman, P.L.S. Iowa Lic. No. 9961, 819 Sycamore Street, Waterloo, Iowa 50703-4729 - Phone: 319-234-0509

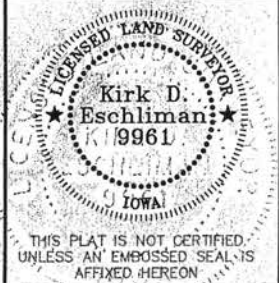
UNITED STATES PUBLIC LAND SURVEY CORNER CERTIFICATE OF
LAND SURVEY MONUMENTS SITUATED IN SECTION 25, TOWNSHIP 88 NORTH, RANGE 12 WEST, OF THE FIFTH PRINCIPAL
MERIDIAN, BLACK HAWK COUNTY, IOWA.

(SHOW REASON FOR PREPARING THIS CERTIFICATE, THE EVIDENCE AND DETAILED PROCEDURES USED IN ESTABLISHING THE CORNER POSITIONS AND
MONUMENTATION FOUND OR PLACED.)
MONUMENT DESCRIPTION AND REMARKS:
NO RECORD OF MONUMENT BEING SET. NO MONUMENT WAS FOUND. SET NO. 5 REBAR WITH ALUM. ID CAP STAMPED
"KESS&ASSOCIATES". CORNER FALLS IN OLD WOVEN WIRE FENCE



I HEREBY CERTIFY THAT THIS LAND SURVEYING DOCUMENT
WAS PREPARED AND THE RELATED SURVEY WORK WAS
PERFORMED BY ME OR UNDER MY DIRECT PERSONAL
SUPERVISION AND THAT I AM A DULY LICENSED LAND
SURVEYOR UNDER THE LAWS OF THE STATE OF IOWA.

Kirk D. Eschliman DATE: **06/05/2013**
KIRK D. ESCHLIMAN, P.L.S. IOWA LIC. NO. 9961
MY LICENSE RENEWAL DATE IS DECEMBER 31, 2013
PAGES OR SHEETS COVERED BY THIS SIGNATURE & SEAL: SHEET 1 OF 1



LIST OF CORNERS TO BE INDEXED:			
CORNER	SEC.	TWP	RANGE
NE COR SW 1/4 SW 1/4	25	88	12

KESS & ASSOCIATES, INC.
819 SYCAMORE ST., WATERLOO, IOWA 50703-4729 PHONE: (319) 234-0509

DATE OF FIELD WORK: 12/03/2012
DWG. DATE: 12/03/2012 DRAWN BY: CJP
CADD FILE: 12A51.SCTIESDWG PROJECT NO.: 12A51