



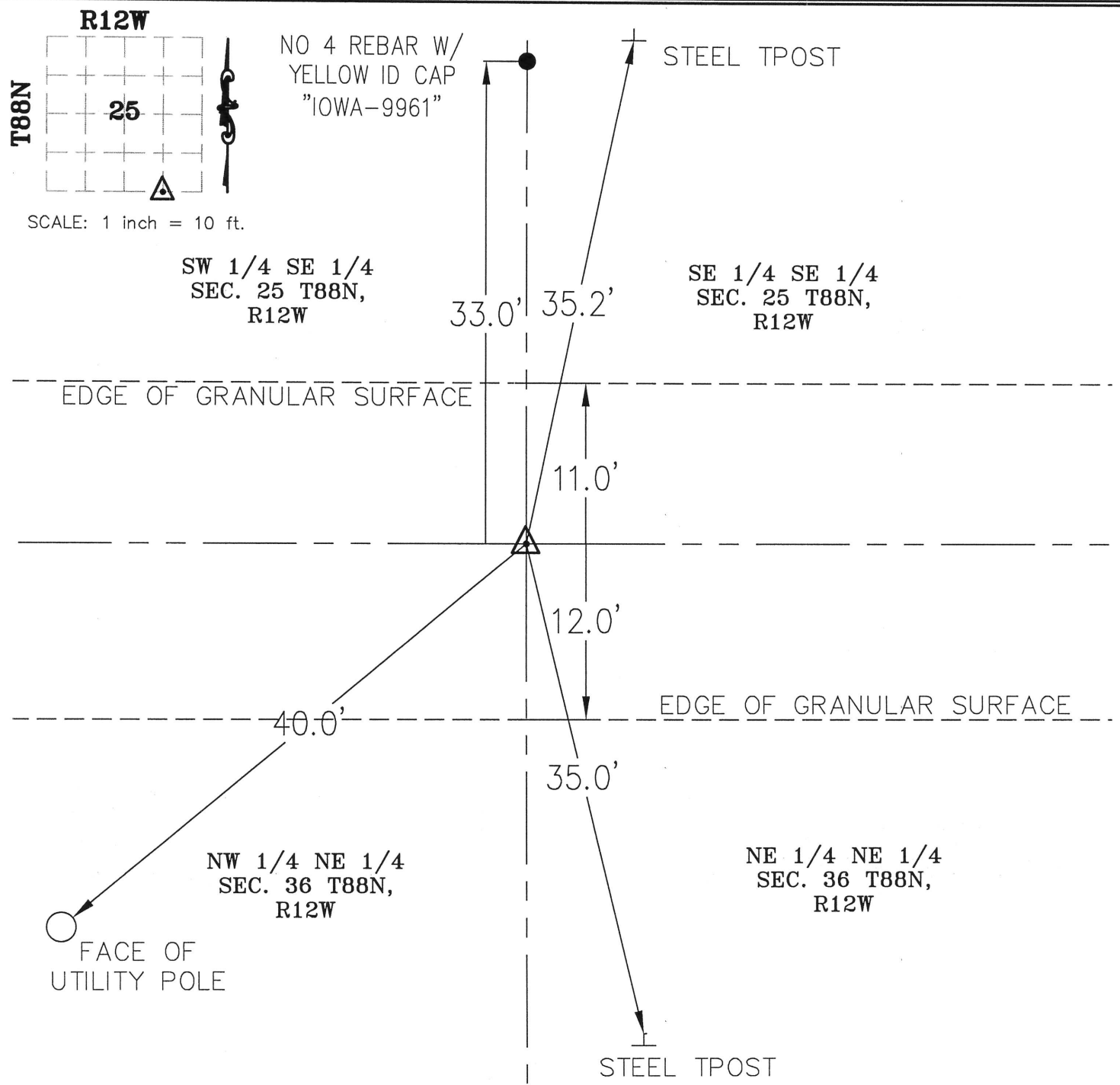
Doc ID: 005182130001 Type: GEN
Kind: CORNER
Recorded: 06/13/2013 at 02:40:58 PM
Fee Amt: \$7.00 Page 1 of 1
Black Hawk County Iowa
JUDITH A MCCARTHY RECORDER

File 2013-00025975

Kirk D. Eschliman, P.L.S. Iowa Lic. No. 9961, 819 Sycamore Street, Waterloo, Iowa 50703-4729 — Phone: 319-234-0509

UNITED STATES PUBLIC LAND SURVEY CORNER CERTIFICATE OF
LAND SURVEY MONUMENTS SITUATED IN SECTION 25, TOWNSHIP 88 NORTH, RANGE 12 WEST, OF THE FIFTH PRINCIPAL
MERIDIAN, BLACK HAWK COUNTY, IOWA.

(SHOW REASON FOR PREPARING THIS CERTIFICATE, THE EVIDENCE AND DETAILED PROCEDURES USED IN ESTABLISHING THE CORNER POSITIONS AND
MONUMENTATION FOUND OR PLACED.)
MONUMENT DESCRIPTION AND REMARKS:
NO RECORD OF MONUMENT BEING SET. NO MONUMENT WAS FOUND. SET NO. 5 REBAR WITH ALUM. ID CAP STAMPED
"KESS&ASSOCIATES". CORNER WAS SET ON LINE AND MID WAY BETWEEN S 1/4 COR. AND SE COR.



I HEREBY CERTIFY THAT THIS LAND SURVEYING DOCUMENT
WAS PREPARED AND THE RELATED SURVEY WORK WAS
PERFORMED BY ME OR UNDER MY DIRECT PERSONAL
SUPERVISION AND THAT I AM A DULY LICENSED LAND
SURVEYOR UNDER THE LAWS OF THE STATE OF IOWA.

Kirk D. Eschliman DATE: 06/03/2013
KIRK D. ESCHLIMAN, P.L.S. IOWA LIC. NO. 9961
MY LICENSE RENEWAL DATE IS DECEMBER 31, 2013
PAGES OR SHEETS COVERED BY THIS SIGNATURE & SEAL: SHEET 1 OF 1



LIST OF CORNERS TO BE INDEXED:			
CORNER	SEC.	TWP	RANGE
SW COR.	25	88	12
SE 1/4 SE 1/4			

KESS & ASSOCIATES, INC.
819 SYCAMORE ST., WATERLOO, IOWA 50703-4729 PHONE: (319) 234-0509

DATE OF FIELD WORK: 12/03/2012
DWG. DATE: 12/03/2012 DRAWN BY: CJP
CADD FILE: 12A51.SCTIESDWG PROJECT NO.: 12A51

(7-00)