



Doc ID: 007611660001 Type: GEN
Recorded: 04/26/2017 at 01:29:38 PM
Fee Amt: \$7.00 Page 1 of 1
Black Hawk County Iowa
SANDIE L. SMITH RECORDER

File 2017-00018668



WAYNE CLAASSEN ENGINEERING AND SURVEYING, INC.
P.O. BOX 898 WATERLOO, IOWA 50704-0898

PHONE: (VOICE) 319-235-6294
(FAX) 319-235-0028

UNITED STATES PUBLIC LAND SURVEY CORNER CERTIFICATE

Land Survey Monuments situated in Section 24, Township 88 North, Range 12 West, of the Fifth Principal Meridian, Black Hawk County, Iowa.

Previously recorded in _____ in County Recorder's Office.
(book, page, document number, etc.)

Monument Description and Remarks

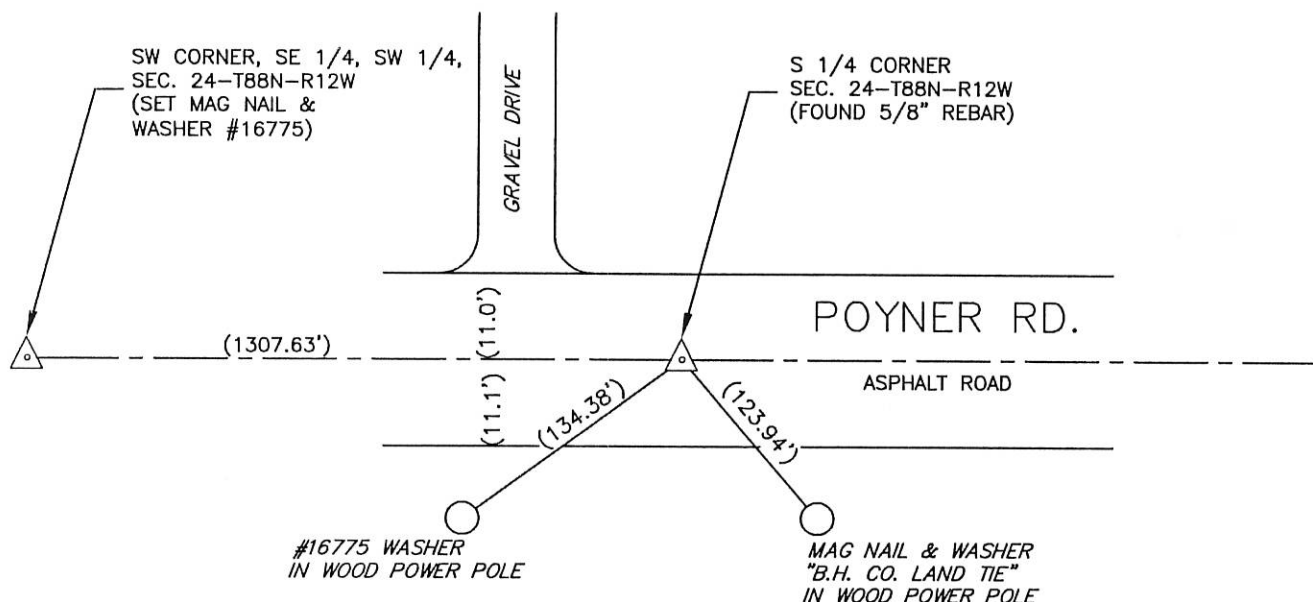
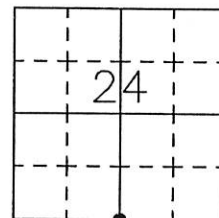
The following note was found in the Black Hawk County Engineer's Office WPA field books regarding this corner: "Found, Nothing: Established Corner on prorated distances between Section Corners, & $\frac{1}{4}$ $\frac{1}{4}$ fe's, & property fences according to old Surveys Newton, Ball & Barber. A big cut has been made here when road was put int and so any, old evidence on the spot is gone."

Went to location of S 1/4 Corner and found 5/8" rebar in asphalt pavement.

PLAN - VIEW

Reason for filing certificate:

- ☒ There is no certificate on file with the Recorder's Office.
- ☐ Accepts corner position which differs from the one shown in above document.
- ☐ The corner monument was replaced or modified.
- ☐ The reference ties in above document were incorrect or missing.



Iowa State Plane Coordinate System
(North Zone, 2011 Adj.)
N= 3616495.1
E= 5274807.0
(For reference only)

749-11

I hereby certify that this land surveying document was prepared and the related survey work was performed by me or under my direct personal supervision and that I am a duly Licensed Land Surveyor under the laws of the State of Iowa.

Signature: David L. Scheil
David L. Scheil, L.S.

Date: April 24, 2017 Lic. No. 16775

Pages or Sheets Covered by this Seal: THIS SHEET ONLY.

My license renewal date is December 31, 2018

SEAL

List Corners to be Indexed

Corners	Section	Twp	Range
S 1/4 CORNER,	24	88 N	12 W
N 1/4 CORNER,	25	88 N	12 W

