

INDEX SS BLACK HAWK COUNTY, IOWA:SS

FEE BOOK # 2005 23727

PROOF FILED FOR RECORD APR 14 2005 AT 1:00 P. M. FEE 1-5.00-1.00/

COMPARED

Patricia A. Schell

BLACK HAWK COUNTY RECORDER

ENV WAYNE CLAASSEN ENGINEERING AND SURVEYING INC

WAYNE CLAASSEN ENGINEERING AND SURVEYING, INC.
P.O. BOX 898 WATERLOO, IOWA 50704-0898PHONE: (VOICE) 319-235-6294
(FAX) 319-235-0028

UNITED STATES PUBLIC LAND SURVEY CORNER CERTIFICATE

Land Survey Monuments situated in Section 23, Township 88 North, Range 12 West, of the Fifth Principal Meridian, Black Hawk County, Iowa.
Previously recorded in _____ in County Recorder's Office.
(book, page, document number, etc.)

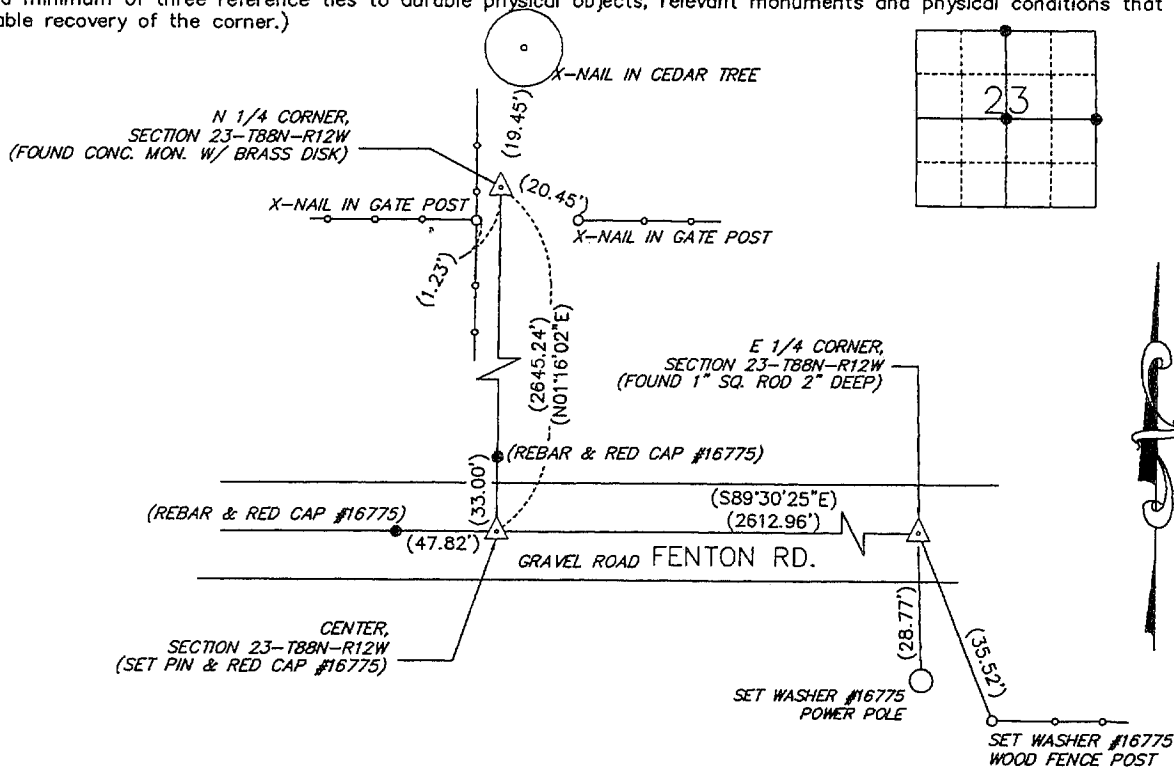
(Show reason for preparing this certificate, the evidence and detailed procedures used in establishing the corner positions and monumentation found or placed.)

Monument Description and Remarks _____

Center: set pin & red cap #16775 from tie on Parkview Addition and Schmit's 1st Gilbertville AdditionNorth quarter corner has no certificate on file.East quarter corner has no certificate on file.

PLAN - VIEW

(Show a minimum of three reference ties to durable physical objects, relevant monuments and physical conditions that will enable recovery of the corner.)



BK. 303, PG. 29

CERTIFICATION

I hereby certify that this land surveying document was prepared and the related survey work was performed by me or under my direct personal supervision and that I am a duly Licensed Land Surveyor under the laws of the State of Iowa.

Signature: *David L. Schell*

David L. Schell, L.S.

Date: APR 14 13, 2005 Lic. No. 16775

My license renewal date is December 31, 2006

SEAL

List Corners to be Indexed

Corners	Section	Twp	Range
N 1/4 CORNER,	23	88 N	12 W
CENTER,	23	88 N	12 W
E 1/4 CORNER,	23	88 N	12 W

