

2025-14395
RECORDED: 10/01/2025 10:56:29 AM
RECORDING FEE: \$7.00
IOWA E-FILING FEE: \$3.00
COMBINED FEE: \$10.00
REVENUE TAX: \$0.00
SANDIE L. SMITH, RECORDER
BLACK HAWK COUNTY, IOWA

Prepared by & Return to: Christopher C. Sweeney, HRS, LLC, 2206 East Bremer Avenue, Waverly, IA 50677, Phone 319-483-5187

United States Public Land Survey Corner Certificate

Land Survey Monument situated in
 Section **22**, Township **88 North**, Range **12 West** of the Fifth Principal Meridian, **Black Hawk County, Iowa.**
 Not on On file in **Book 304, Page 608** in the County Recorder's Office.

This certificate is being prepared in compliance with Iowa Code Chapter 355.11 because: {

- There is no certificate on file for this corner.
- There are no longer three valid ties of record.
- There are changes to reference ties of record.
- There is change of monumentation of record.
- To clarify description of record monument (ties).

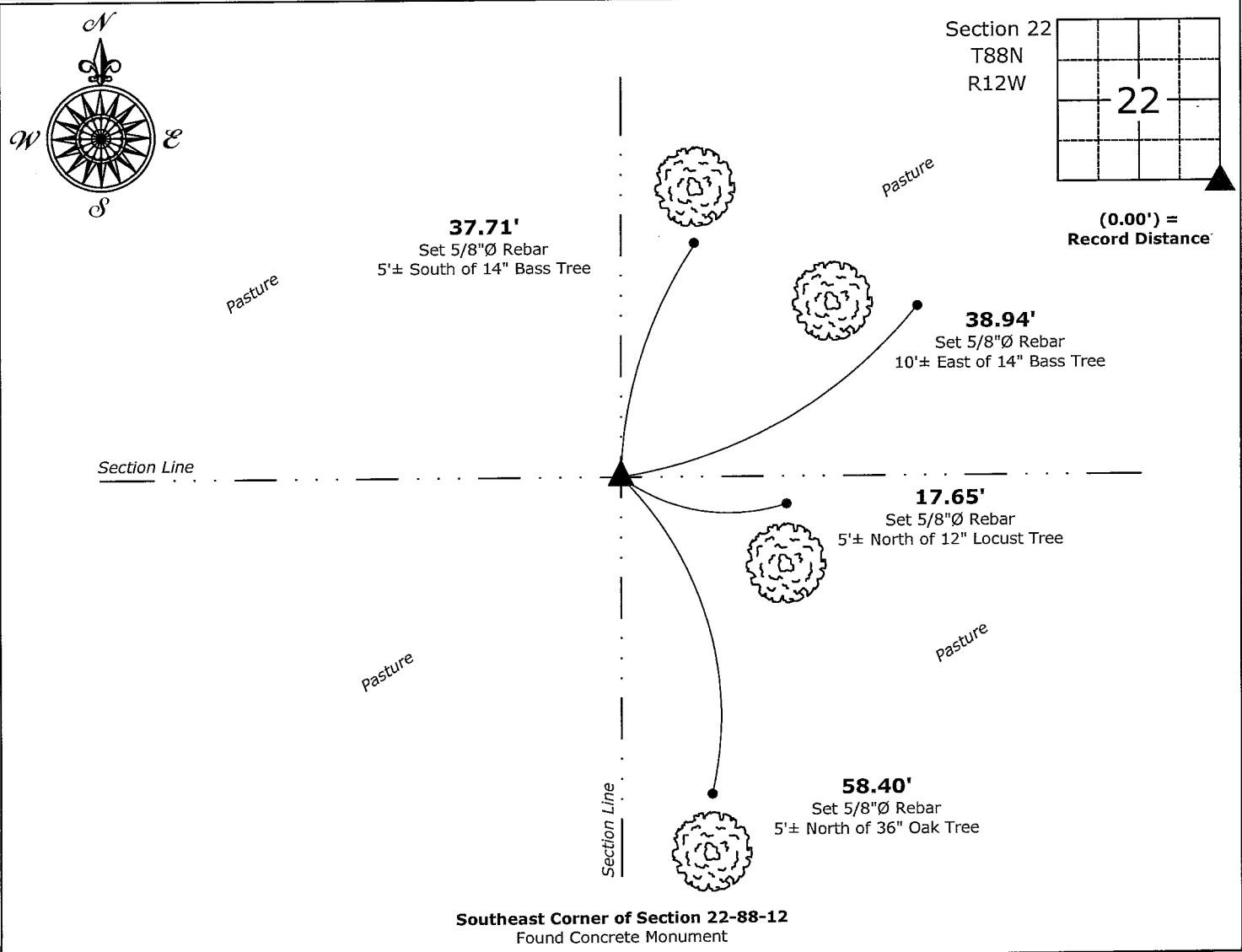
Monument Description and Remarks:

Southeast Corner:

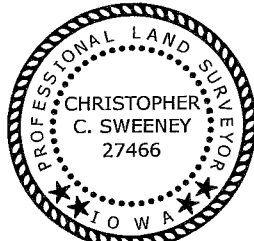
Found Concrete Monument with information obtained from the previously recorded Section Corner Certificate.

Plan View - Not to Scale

(Show a minimum of three reference ties to durable physical objects, relevant monuments and physical conditions that will enable recovery of the corner.)



Southeast Corner of Section 22-88-12
 Found Concrete Monument



I hereby certify that this land surveying document was prepared and the related survey work was performed by me or under my direct personal supervision and that I am a duly licensed Land Surveyor under the laws of the State of Iowa.

Christopher C. Sweeney 9-30-2025
 Christopher C. Sweeney Date:
 License Number 27466
 My license renewal date is December 31, 2025
 Sheets covered by this seal: Individual sheet only

List Corner to be Indexed			
Corner	Section	Township	Range
SE	22	88	12
Project Number: 2025-562			
FB: Black Hawk 12, Page(s) 35-36			