

RECORDER
5-23-95
BOOKS I & II

WAYNE CLAASSEN ENGINEERING AND SURVEYING, INC.
P.O. BOX 898 WATERLOO, IOWA 50704-0898

PHONE: (VOICE) 319-235-6294
(FAX) 319-235-0028

UNITED STATES PUBLIC LAND SURVEY CORNER CERTIFICATE

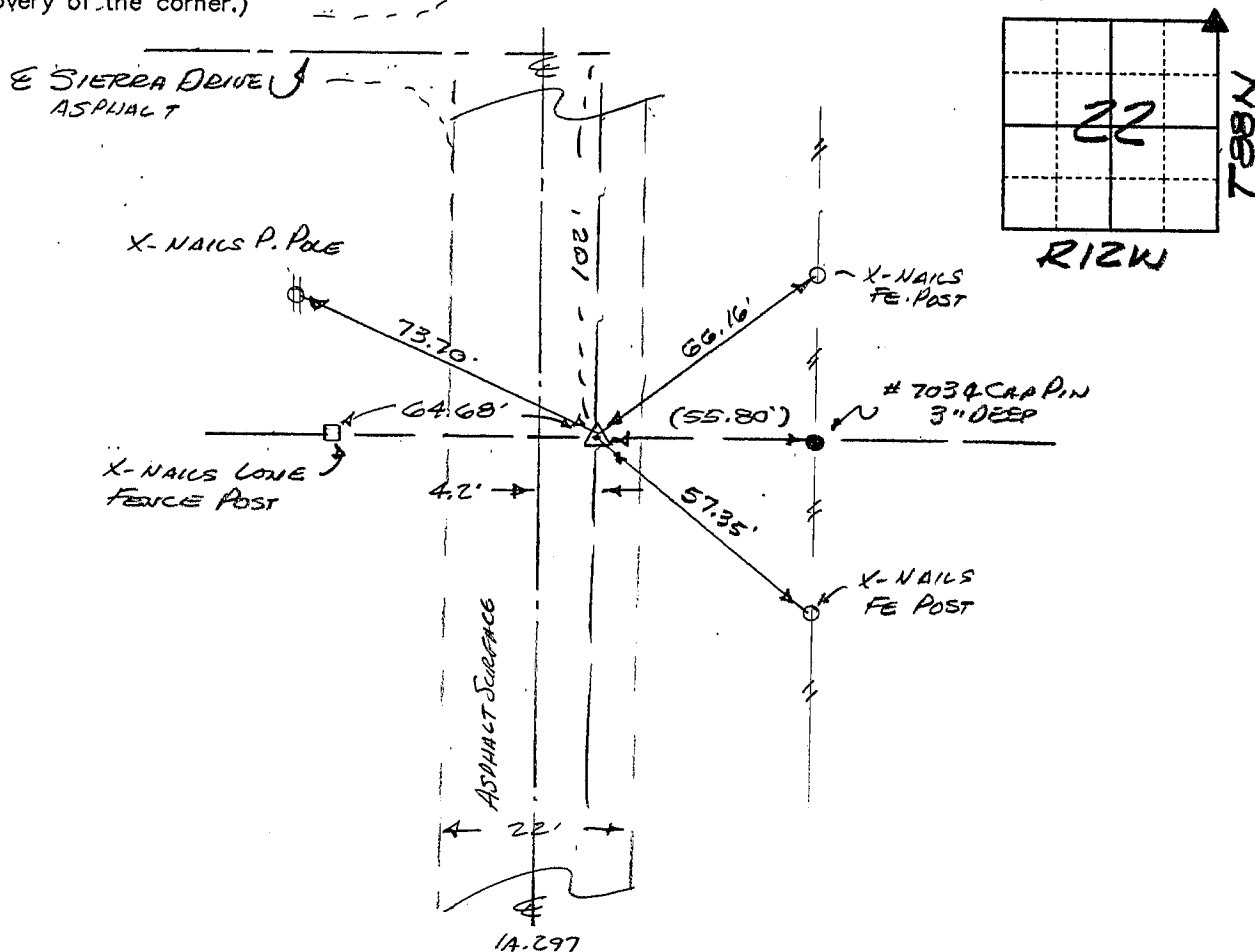
Land Survey Monuments situated in Section 22, Township 88 N, Range 12 W, of the Fifth Principal Meridian, BLACK HAWK County, Iowa.
Previously recorded in N/A in County Recorder's Office.
(book, page, document number, etc.)

(Show reason for preparing this certificate, the evidence and detailed procedures used in establishing the corner positions and monumentation found or placed.)

Monument Description and Remarks NE COR. 22-88-12, FOUND CONEHEAD NAIL IN ASPHALT
PAVING 4.2' EAST OF E #297 PER D.O.T. RECORD & DESCRIPTION & RECORDED PLAT
SCHMITZ'S 2ND ADDITION.

PLAN - VIEW

(Show a minimum of three reference ties to durable physical objects, relevant monuments and physical conditions that will enable recovery of the corner.)



410-50

I hereby certify that the survey work was completed and this certificate was prepared by me or under my direct personal supervision and that I am a duly registered land surveyor under the laws of the state of Iowa.

Signature: F. William King
(Name typed or printed: F. William King)
Date: 12-20-95 Reg. No. 8033



List Corners to be Indexed

Corners	Section	Twp	Range
<u>NE</u>	<u>22</u>	<u>88 N</u>	<u>12 W</u>

MISC. BK. 319 p. 5