



Doc ID: 004363090002 Type: GEN  
Kind: CORNER  
Recorded: 01/06/2011 at 02:04:49 PM  
Fee Amt: \$0.00 Page 1 of 2  
Black Hawk County Iowa  
JUDITH A MCCARTHY RECORDER

File **2011-00013723**

\*

- Page #1 of 2 -

PREPARED BY: BLACK HAWK COUNTY ENGINEERS OFFICE  
316 E. FIFTH STREET, ROOM 211 WATERLOO, IOWA 50703

PH.# (319) 833-3008 SLSI 9-94  
FAX.# (319) 833-3139 BHCO 03-09

UNITED STATES PUBLIC LAND SURVEY CORNER CERTIFICATE OF  
Land Survey Monuments situated in Section 22, Township 88 N,  
Range 12 W, of the Fifth Principal Meridian, BLACK HAWK County, Iowa.  
Previously recorded in Misc. Book 319, Page 007, in County Recorder's Office.  
(Show reason for preparing this certificate): The reference ties referred to in an existing public record are not correct,  
per Ia. Code 355.11(1)(d).

(Evidence and detailed procedures used in establishing the corner position(s) and monumentation found or placed.)

**Monument Description and Remarks** EAST 1/4 COR.

COR. NOT DISTURBED AS PART OF 2009 RESURFACING PROJECT FOR RAYMOND RD. (OLD IA. 297), YET REFERENCE TIES "UPDATED" TO GEOM. CURVE NORTH AND PAVEMENT DETAILS AS NOTED. UTIL. FND. #4 RBR. @ 0.5' DEPTH PRIOR TO HMA RESURF. PROJECT FOR OLD HWY. 297. CORNER LOC. ±7" EAST OF ACC/HMA EDGE, AND 11.6' NORTH OF HMA PAVEMENT HEADER. ADDITIONAL CORNER REF. (LAND COR. GEOM. N-S) AT RECORD CORNER, PER SURVEY IN FEE BK. 2003-05581. RECORD P.T. NORTH OF CORNER WAS ALSO FOUND & RESET. P.T. LOCATED AT 0.5' "WEST" OF EAST LINE N.E. 1/4 SECT., AS OBSERVED & RE-EST., & REFLECTED IN EXISTING COR. CERT. RECORD (MISC. 319 p.7) PER PLS #8033. EXIST. REF. TIES DENOTED IN EXIST. RECORD ARE "CORRECT", YET UPDATED FOR FILE. (CONT.)

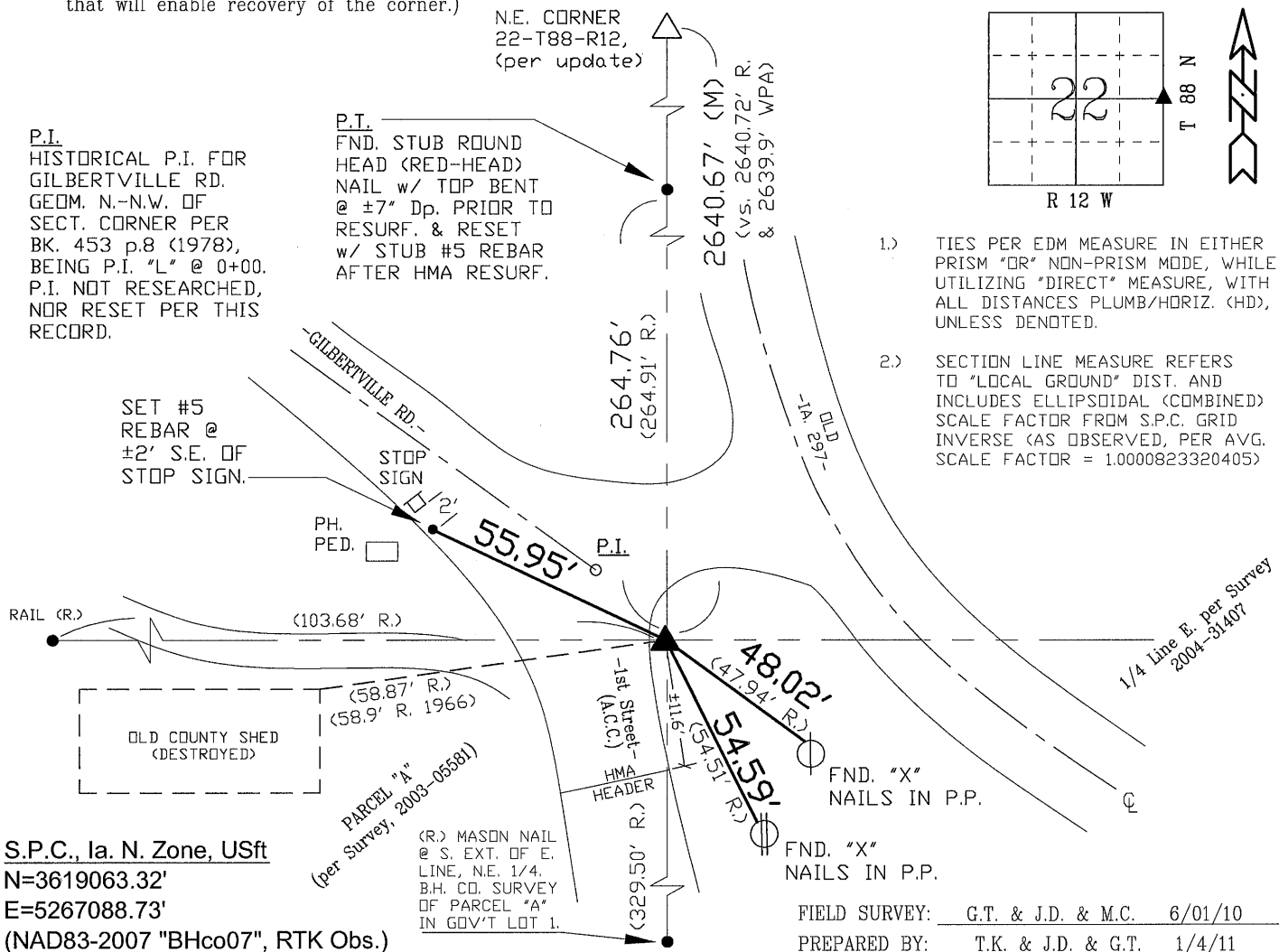
**PLAN VIEW**

"NOT TO SCALE"

BHco Hist. Ties: BK. #1001 p.22 88-12

FIELD BOOK: BHco. #489 pp. 1-2

(Show a minimum of three reference ties to durable physical objects, relevant monuments and physical conditions that will enable recovery of the corner.)

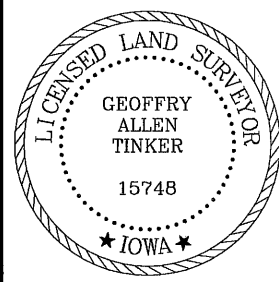


- 1.) TIES PER EDM MEASURE IN EITHER PRISM "OR" NON-PRISM MODE, WHILE UTILIZING "DIRECT" MEASURE, WITH ALL DISTANCES PLUMB/HORIZ. (HD), UNLESS DENOTED.
- 2.) SECTION LINE MEASURE REFERS TO "LOCAL GROUND" DIST. AND INCLUDES ELLIPSOIDAL (COMBINED) SCALE FACTOR FROM S.P.C. GRID INVERSE (AS OBSERVED, PER AVG. SCALE FACTOR = 1.0000823320405)

S.P.C., Ia. N. Zone, USft  
N=3619063.32'  
E=5267088.73'  
(NAD83-2007 "BHco07", RTK Obs.)

FIELD SURVEY: G.T. & J.D. & M.C. 6/01/10  
PREPARED BY: T.K. & J.D. & G.T. 1/4/11

**CERTIFICATION**



I hereby certify that this land surveying document was prepared and the related survey work was performed by me or under my direct personal supervision and that I am a duly licensed Land Surveyor under the laws of the State of Iowa.

*Geoffrey Allen Tinker* 01/06/2011  
Geoffrey Allen Tinker (date)

License Number 15748

My license renewal date is December 31, 2012

Pages or sheets covered by this seal:

p.1 & 2 of Corner Certificate Only.

**LIST CORNERS TO BE INDEXED**

Corner	Section	Township	Range
E. 1/4 Cor.	22	88 N	12 W
W. 1/4 Cor.	23	88 N	12 W

- Page #1 of 2 -

**INDEX OF ABBREVIATIONS**

(M) = "Measured" Dimension  
(P) = "Platted" Dimension  
(R) = "Record" Dimension  
(C) = "Calculated" Dimension  
(G) = Iowa Geodetic Survey  
(W) = Works Progress Admin. Survey  
(G) = per George Miller Survey (BHco Surveyor 1858-1860)  
(B) = per John Ball Survey (BHco Surveyor 1866-1891)  
(N) = per Nathan Barber Survey (BHco Surveyor 1908-1931)  
"NP" = Reflectorless EDM Meas.  
"MLM" = Indirect Measure  
"CM" = Concrete Monument  
"SM" = Survey Marker Spike/Tag  
"PK" = PK/MAG Nail Brand Style

G:\Survey Library\BHcoEng-LandCors\LandCor-CertDWGs\228812-E.dwg, 1/4/2011 11:55:33 AM, G.T.