

Patricia A. Jones

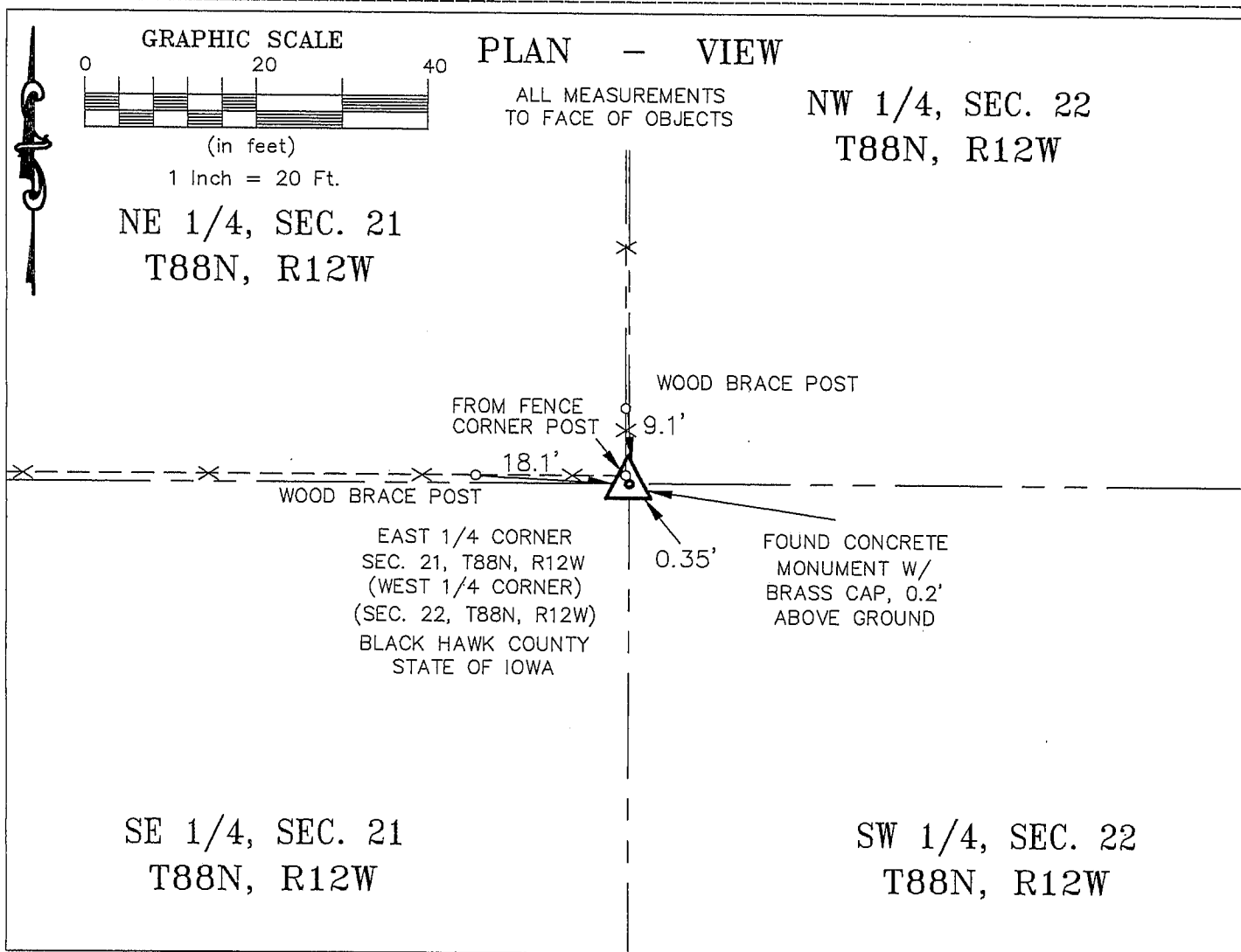
KESS & ASSOCIATES

Kirk D. Eschliman, P.L.S. Iowa Lic. No. 9961, 723 Broadway Street, Waterloo, Iowa 50703 - Phone: 319-234-0509

UNITED STATES PUBLIC LAND SURVEY CORNER CERTIFICATE
OFLAND SURVEY MONUMENTS SITUATED IN SECTION TWENTY-ONE (21), TOWNSHIP EIGHTY-EIGHT (88) NORTH
RANGE TWELVE (12) WEST, OF THE FIFTH PRINCIPAL MERIDIAN, BLACK HAWK COUNTY, IOWA.
PREVIOUSLY RECORDED IN (NOT PREVIOUSLY RECORDED) (BOOK, PAGE, DOCUMENT NUMBER, ETC.) IN THE COUNTY RECORDER'S OFFICE.

(SHOW REASON FOR PREPARING THIS CERTIFICATE, THE EVIDENCE AND DETAILED PROCEDURES USED IN ESTABLISHING THE CORNER POSITIONS AND MONUMENTATION FOUND OR PLACED.)

MONUMENT DESCRIPTION AND REMARKS:

FOUND 4"x4" CONCRETE MONUMENT WITH BRASS CAP 0.2' ABOVE GROUND SURFACECURRENT SECTION CORNER CERTIFICATE NOT ON FILE IN THE BLACK HAWK COUNTY ENGINEER'S OFFICEI HEREBY CERTIFY THAT THIS LAND SURVEYING DOCUMENT
WAS PREPARED AND RELATED SURVEY WORK WAS
PERFORMED BY ME OR UNDER MY DIRECT PERSONAL
SUPERVISION AND THAT I AM A DULY LICENSED LAND
SURVEYOR UNDER THE LAWS OF THE STATE OF IOWA.Kirk D. Eschliman DATE: 03/14/2005
KIRK D. ESCHLIMAN, P.L.S. IOWA LIC. NO. 9961
MY LICENSE RENEWAL DATE IS DECEMBER 31, 2005
PAGES OR SHEETS COVERED BY THIS SIGNATURE & SEAL: SHEET 1 OF 1FOR: LES JENSEN & WANDA BORGWARDT
918 BROOKSIDE DR.
EVANS DALE, IOWA 50707REQ. BY: DOUGLAS V. COONRAD, ATTY.
HUDSON, IOWAKESS & ASSOCIATES, INC.
PROFESSIONAL LAND SURVEYORS: 723 BROADWAY, WATERLOO, IOWA 50703-5811
DATE: 2/08/2005 C.A.D.D. FILE: 05A06SCC3.DWG PROJECT NO.: 05A06

List of corners to be indexed:

Corners	Section	Township	Range
E 1/4	21	T88N	R12W

