

016231

SC  
MISC  
INDEX 57  
MARGIN  
PROOF  
COMPAREBLACK HAWK COUNTY IOWA:SS  
Filed for record DEC 17, 2001 at  
4:00 P.M. and recorded in Book 345  
Page 53MISC  
*Catherine D. Lee*

RECORDER

FEE 1-5.00Z

IOWA DEPARTMENT OF TRANSPORTATION  
PO BOX 741  
MASON CITY IA 50402-0741

PREPARED BY KENNETH D. STARK IOWA DEPARTMENT OF TRANSPORTATION BOX 741, MASON CITY, IOWA 50401 515-423-7584

UNITED STATES PUBLIC LAND SURVEY CORNER CERTIFICATE  
OFLand Survey Monuments situated in Section 20, Township 88N, Range 12W  
of the Fifth Principal Meridian, BLACK HAWK County, Iowa.Previously recorded in 327 p. 334  
323 p. 646 ~~X~~ 317 p. 569 in County Recorder's Office.  
MISC. (book, page, document number, etc.)

(Show reason for preparing this certificate, the evidence and detailed procedures used in establishing the corner positions and monumentation found or placed.)

Monument Description and Remarks:

NW CORNER SEC 20-88-12

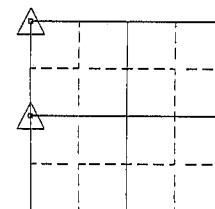
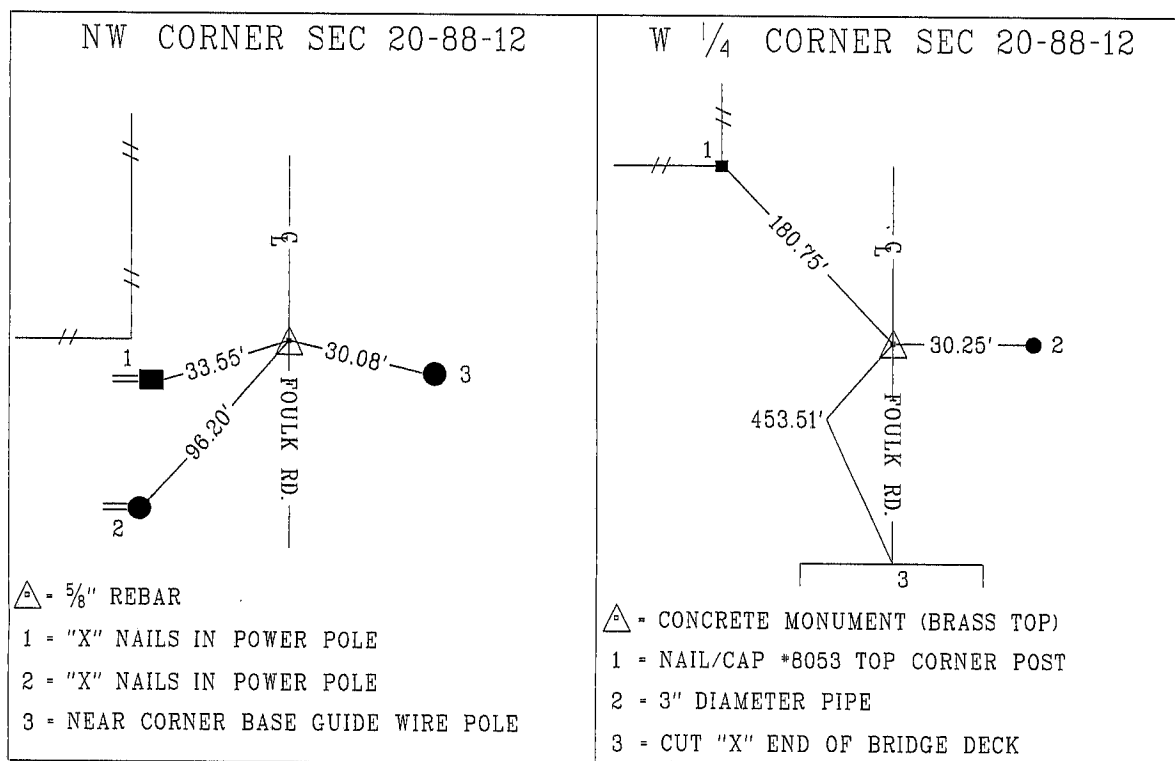
FOUND 5/8" REBAR

W 1/4 CORNER SEC 20-88-12

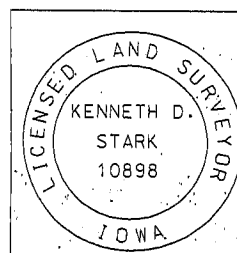
FOUND CONCRETE MONUMENT (BRASS TOP)

## PLAN - VIEW

(Show a minimum of three reference ties to durable physical objects, relevant monuments and physical conditions that will enable recovery of the corner.)



N



I hereby certify that this land surveying document was prepared and the related survey work was performed by me or under my personal supervision and that I am a duly licensed Land Surveyor under the laws of the state of Iowa.

*Kenneth D. Stark* 12-11-01  
Kenneth D. Stark Date  
License number 10898  
My License renewal date is December 31, 2003  
Pages or sheets covered by this seal. 1

## List Corners to be Indexed

Corner	Section	Township	Range
NW CORNER	20	88N	12W
W 1/4 CORNER	20	88N	12W