



Doc ID: 004049250001 Type: GEN
Kind: CORNER
Recorded: 02/09/2010 at 03:50:58 PM
Fee Amt: \$9.00 Page 1 of 1
Black Hawk County Iowa
JUDITH A MCCARTHY RECORDER

File 2010-00015164

Jeffrey P. Helland, 1107 Technology Parkway, Cedar Falls, Iowa 50613-6951, (319)-266-0161

UNITED STATES PUBLIC LAND SURVEY CORNER CERTIFICATE
OF

LAND SURVEY MONUMENTS SITUATED IN SECTION NO. 20, TOWNSHIP NO. 88 NORTH, RANGE
NO. 13 WEST OF THE FIFTH PRINCIPAL MERIDIAN, BLACK HAWK COUNTY, IOWA.
PREVIOUSLY RECORDED IN 345 MISC. 582

(SHOW REASON FOR PREPARING THIS CERTIFICATE, THE EVIDENCE AND DETAILED PROCEDURES USED IN ESTABLISHING THE
CORNER POSITIONS AND MONUMENTATION FOUND OR PLACED.)

MONUMENT DESCRIPTION AND REMARKS:

USPLSCC 345 MISC. 582 REFERENCE TIES HAVE CHANGED. SURVEY COMPLETED IN THE SE 1/4 OF SEC. 20-T88N-R13W.

→ **E 1/4 CORNER:** AUDITOR'S SURVEY RECORD BK 1 PG 548 DATED 10/31/1884 CALLS FOR [STONE]. SURVEYOR'S RECORD
BOOK 1 (AUDITOR'S OFFICE) DATED 9/10 & 17/1915 CALLS FOR [STONE]. BLACK HAWK COUNTY ENGINEER REFERENCE TIES
(NO DATE) CALLS FOR [FOUND LIMESTONE 16"x9"x5"]. PLAT OF SURVEY 252 MISC. 268 DATED 8/16/1983 CALLS FOR [FO.
CONC. MON]. PLAT OF SURVEY 345 MISC. 581 DATED 2/4/2002 CALLS FOR [BROKEN SCM FOUND]. USPLSCC 345 MISC.
582 DATED 2/4/2002 CALLS FOR [FOUND BROKEN SCM 6" DEEP IN GRAVEL ROAD. SET 1/2"Ø REBAR ON EAST SIDE OF
MONUMENT 9" DEEP]. FOUND BROKEN OFF STANDARD CONCRETE MONUMENT (9" DEEP) SET NO. 4 REBAR w/ALUMINUM
CAP #16264 (7" LONG) ABOVE SAID MONUMENT. **PLAN VIEW**

(SHOW A MINIMUM OF THREE REFERENCE TIES TO DURABLE PHYSICAL OBJECTS, RELEVANT MONUMENTS AND PHYSICAL
CONDITIONS THAT WILL ENABLE RECOVERY OF THE CORNER.)

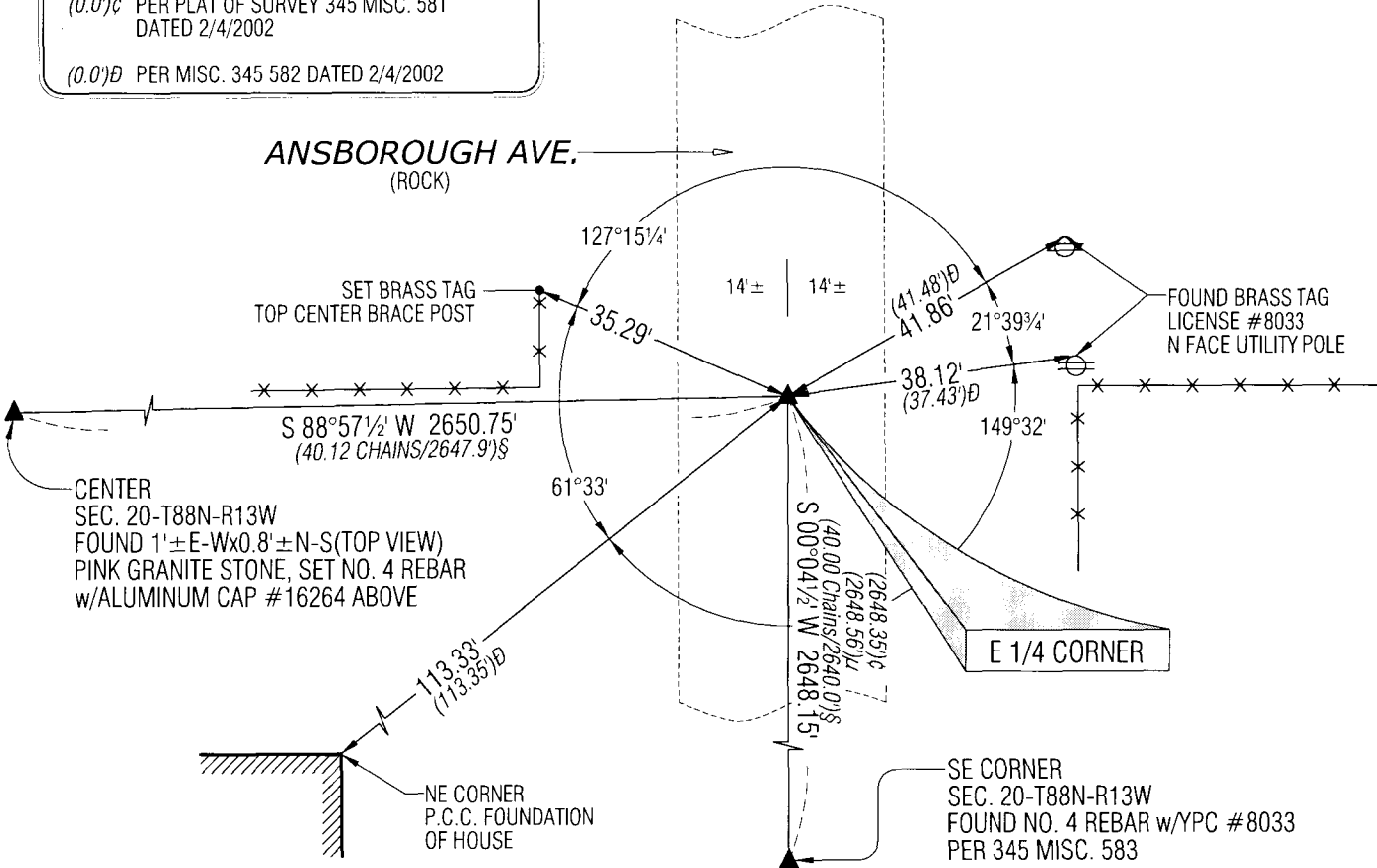
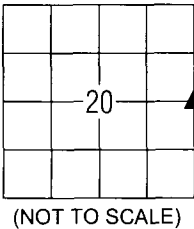
LEGEND

(0.0')§ PER AUDITOR'S SURVEY RECORD BK 1 PG 548
DATED 10/31/1884

(0.0')μ PER PLAT OF SURVEY 252 MISC. 268
DATED 8/19/1983

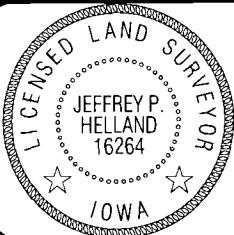
(0.0')c PER PLAT OF SURVEY 345 MISC. 581
DATED 2/4/2002

(0.0')Ø PER MISC. 345 582 DATED 2/4/2002



HES HELLAND ENGINEERING & SURVEYING, LTD.
1107 Technology Parkway
Cedar Falls, Iowa 50613-6951
(319)-266-0161

SHINER = 8D NAIL & 1 5/16"Ø METAL SHINER
BRASS TAG = 13/16"Ø BRASS TAG
OPC = PLASTIC CAP (O=ORANGE, R=RED, Y=YELLOW)
(Ø) RECORDED AS FILE NAME: 10-111C1.DWG



I hereby certify that this land surveying document was prepared
and the related survey work was performed by me or under my
direct personal supervision and that I am a duly licensed Land
Surveyor under the laws of the State of Iowa.
Jeffrey P. Helland 2/9/10
Jeffrey P. Helland
License Number 16264
My license renewal date is December 31, 2011.
All pages or sheets are covered by this seal except:

LIST CORNERS TO BE INDEXED			
CORNER	SECTION	TOWNSHIP	RANGE
E 1/4 CORNER	20	88N	13W
W 1/4 CORNER	21	88N	13W

(9.00)

Rec