

PROOF FILED FOR RECORD APR 8, 2005, AT 2:00 P. M. FEE 1-5.00-1.00/

COMPARED

Patricia L. Less

BLACK HAWK COUNTY RECORDER

ENV WAYNE CLAASSEN ENGINEERING
WAYNE CLAASSEN ENGINEERING AND SURVEYING, INC.
P.O. BOX 898 WATERLOO, IOWA 50704-0898PHONE: (VOICE) 319-235-6294
(FAX) 319-235-0028

UNITED STATES PUBLIC LAND SURVEY CORNER CERTIFICATE

Land Survey Monuments situated in Section 20, Township 88 North, Range 12 West, of the Fifth Principal Meridian, Black Hawk County, Iowa.Previously recorded in _____ in County Recorder's Office.
(book, page, document number, etc.)

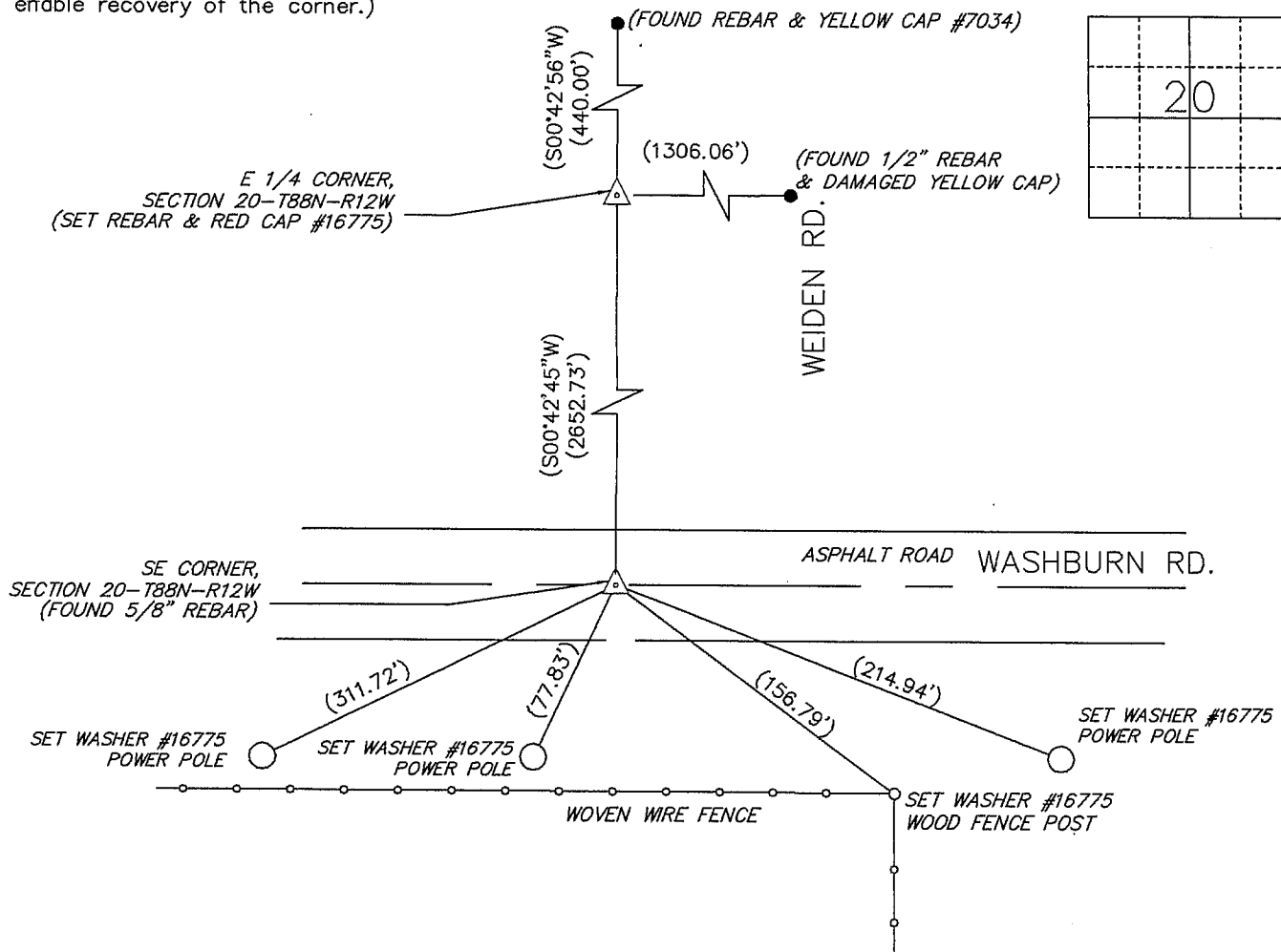
(Show reason for preparing this certificate, the evidence and detailed procedures used in establishing the corner positions and monumentation found or placed.)

Monument Description and Remarks _____

East Quarter corner: Robinson Engineering has a survey from 1967 that shows the West Quarter of Section 21 being 440 feet South of the North corner of the property being surveyed along the Section line.Southeast corner has no certificate on file.

PLAN - VIEW

(Show a minimum of three reference ties to durable physical objects, relevant monuments and physical conditions that will enable recovery of the corner.)



BK. 434, PG. 66

CERTIFICATION

I hereby certify that this land surveying document was prepared and the related survey work was performed by me or under my direct personal supervision and that I am a duly Licensed Land Surveyor under the laws of the State of Iowa.

Signature: *David L. Scheil*
David L. Scheil, L.S.Date: APRIL 07, 2005 Lic. No. 16775

My license renewal date is December 31, 2006

SEAL

List Corners to be Indexed

Corners	Section	Twp	Range
E 1/4 CORNER,	20	88 N	12 W
SE CORNER,	20	88 N	12 W

