

Prepared By: Brian M. Crawford, PLS      Crawford Engineering & Surveying, Inc., Independence, Iowa      319/334-7077

UNITED STATES PUBLIC LAND SURVEY CORNER CERTIFICATE  
OF

Land Survey Monuments situated in Section 20, Township 88 N, Range 12 W, of the Fifth Principal Meridian, Black Hawk County, Iowa.

Previously recorded in N/A in County Recorder's Office.

Monument Description and Remarks:

Reason for preparing certificate: Current certificate is not on file.

Evidence and detailed procedure used to establish corner position: \_\_\_\_\_

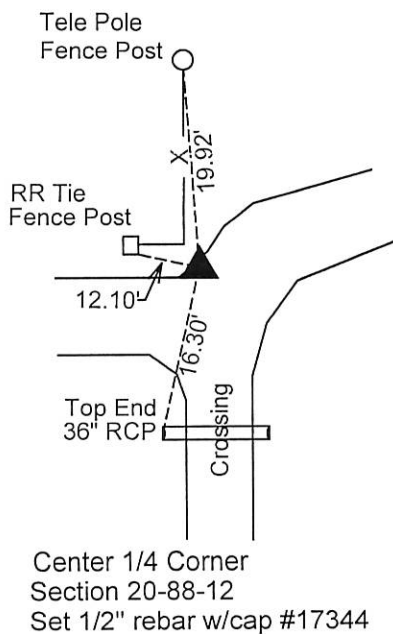
Center - Position established at intersection of N-S and E-W quarter lines.

SW Corner, SE 1/4 NE 1/4 - Position established 1/2 way and on line between Center 1/4 and East 1/4 corners.

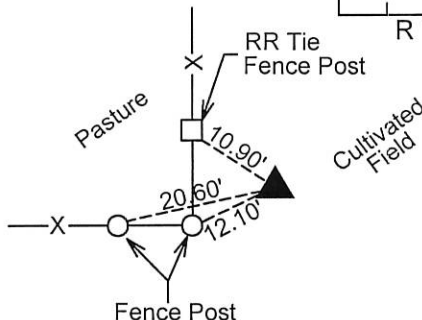
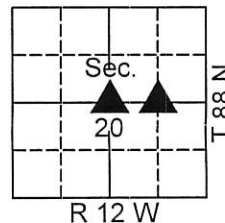
Monumentation found or placed: Set 1/2" rebar with cap #17344

PLAN-VIEW

(Show a minimum of three reference ties to durable physical objects, relevant monuments and physical conditions that will enable recovery of the corner).



SW Corner  
SE 1/4, NE 1/4  
Section 20-88-12  
Set 1/2" rebar w/cap #17344  
12" deep in field



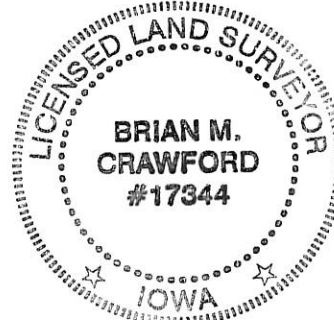
I hereby certify that the survey work was completed and this land surveying document was prepared by me or under my direct personal supervision and that I am a duly licensed land surveyor under the laws of the State of Iowa.

Signature: Brian M. Crawford  
BRIAN M. CRAWFORD, PLS

Date: 3-29-16 Reg. No. 17344

My license renewal date is December 31, 2016

List Corners to be Indexed			
Corners	Section	Twp.	Range
Center 1/4 Corner	20	88 N	12 W
SW Corner SE 1/4, NE 1/4	20	88 N	12 W



SEAL