

SC  
MISC  
INDEX  
MARGIN  
PROOF  
COMPARE

FILED FOR RECORD Nov 6, 2000 AT 009713  
4:00 P M., AND RECORDED IN BOOK 340  
OF MISC PAGE 879  
RECORDER  
FEE 1-65.00/  
PAUL HELLAND

Paul H. Helland, 1107 Technology Parkway, Cedar Falls, Iowa 50613-6951, (319)-266-0161

## UNITED STATES PUBLIC LAND SURVEY CORNER CERTIFICATE OF

LAND SURVEY MONUMENTS SITUATED IN SECTION NO. 19, TOWNSHIP NO. 88 NORTH, RANGE  
NO. 12 WEST OF THE FIFTH PRINCIPAL MERIDIAN, BLACK HAWK COUNTY, IOWA.

PREVIOUSLY RECORDED IN BOOK \_\_\_\_\_, PAGE \_\_\_\_\_.

(SHOW REASON FOR PREPARING THIS CERTIFICATE, THE EVIDENCE AND DETAILED PROCEDURES USED IN ESTABLISHING THE  
CORNER POSITIONS AND MONUMENTATION FOUND OR PLACED.)

### MONUMENT DESCRIPTION AND REMARKS:

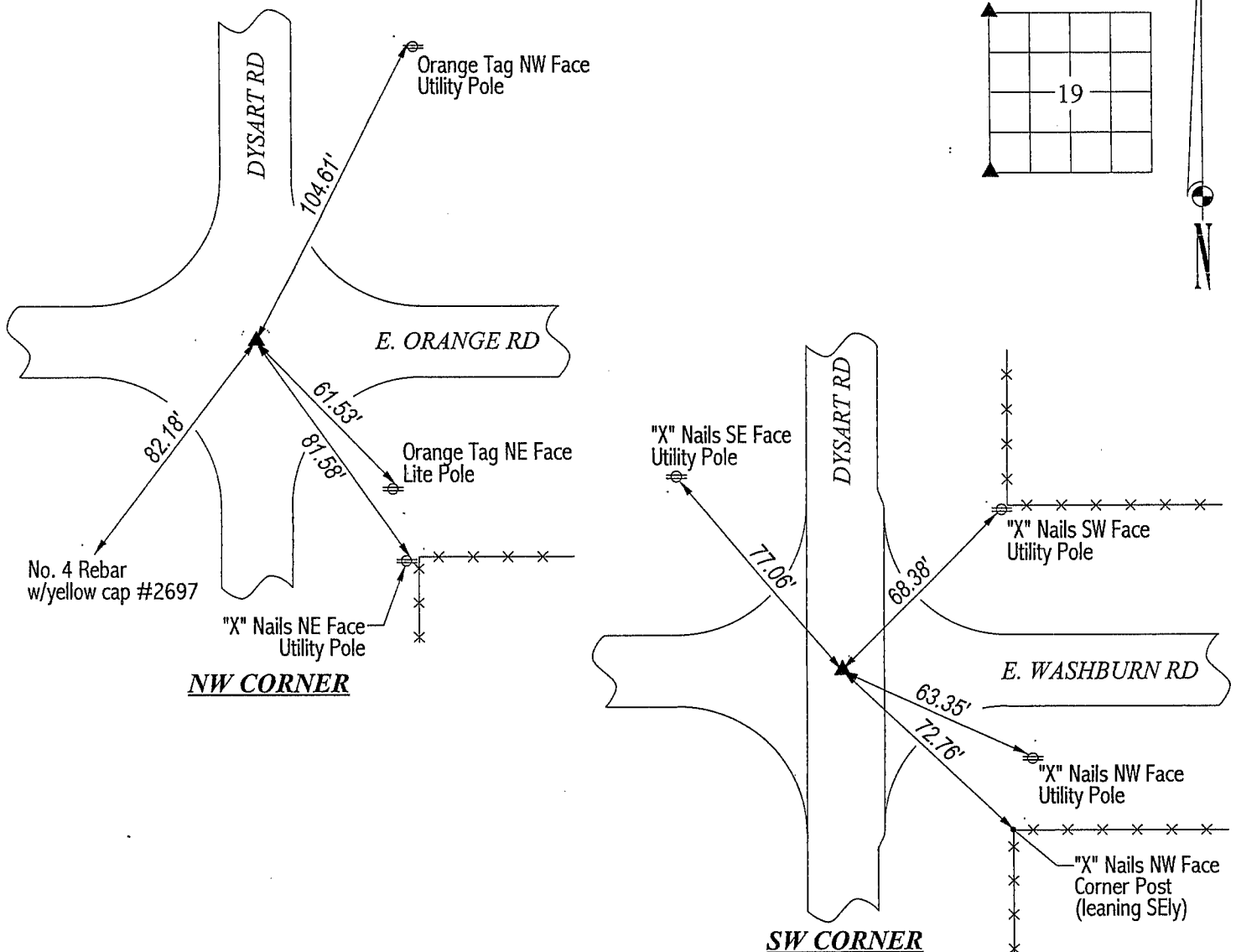
SURVEY DONE IN SWFRL 1/4 NWFRL 1/4 & NWFRL 1/4 SWFRL 1/4 OF SEC. 19-T88N-R12W.

NW CORNER: Found "+" towards East end of 3"Ø brass disc set in P.C.C. pavement. Disc is NW of intersection joint.

SW CORNER: Found 2.25"Ø aluminum disc labeled " B. H. Co. Land Corner" w/"+" in the center of disc.  
Disc is in the centerline of A.C.C. pavement.

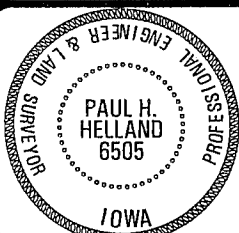
### PLAN VIEW

(SHOW A MINIMUM OF THREE REFERENCE TIES TO DURABLE PHYSICAL OBJECTS, RELEVANT MONUMENTS AND PHYSICAL  
CONDITIONS THAT WILL ENABLE RECOVERY OF THE CORNER.)



HELLAND ENGINEERING & SURVEYING, LTD.  
1107 Technology Parkway  
Cedar Falls, Iowa 50613-6951  
(319)-266-0161

FILE NAME: 00-311CC.DRG



I hereby certify that this land surveying document was prepared  
and the related survey work was performed by me or under my  
direct personal supervision and that I am a duly licensed Land  
Surveyor under the laws of the State of Iowa.

*Paul H. Helland 11/1/00*  
Paul H. Helland  
License Number 6505  
My license renewal date is December 31, 2001.  
All pages or sheets are covered by this seal except:

LIST CORNERS TO BE INDEXED			
CORNER	SECTION	TOWNSHIP	RANGE
NW CORNER	19	88N	12W
SW CORNER	19	88N	12W