

SC  
MISC  
INDEX  
MARGIN  
PROOF  
COMPARE

BLACK HAWK COUNTY IOWA:SS  
Filed for record Sept 15, 1999 at 4:00 P.M.  
and recorded in Book 335 of MISC  
Page 736  
RECORDED  
Fee N/G.  
ENGINEER'S OFFICE

= 6450

RECEIVED - BLACK HAWK CO. RECORDERS

PREPARED BY: BLACK HAWK COUNTY ENGINEERS OFFICE  
316 E. FIFTH STREET, ROOM 211 WATERLOO, IOWA 50703

PH # (319) 833-3008  
FAX # (319) 833-3139  
SLI 9-94  
CERT 12-96

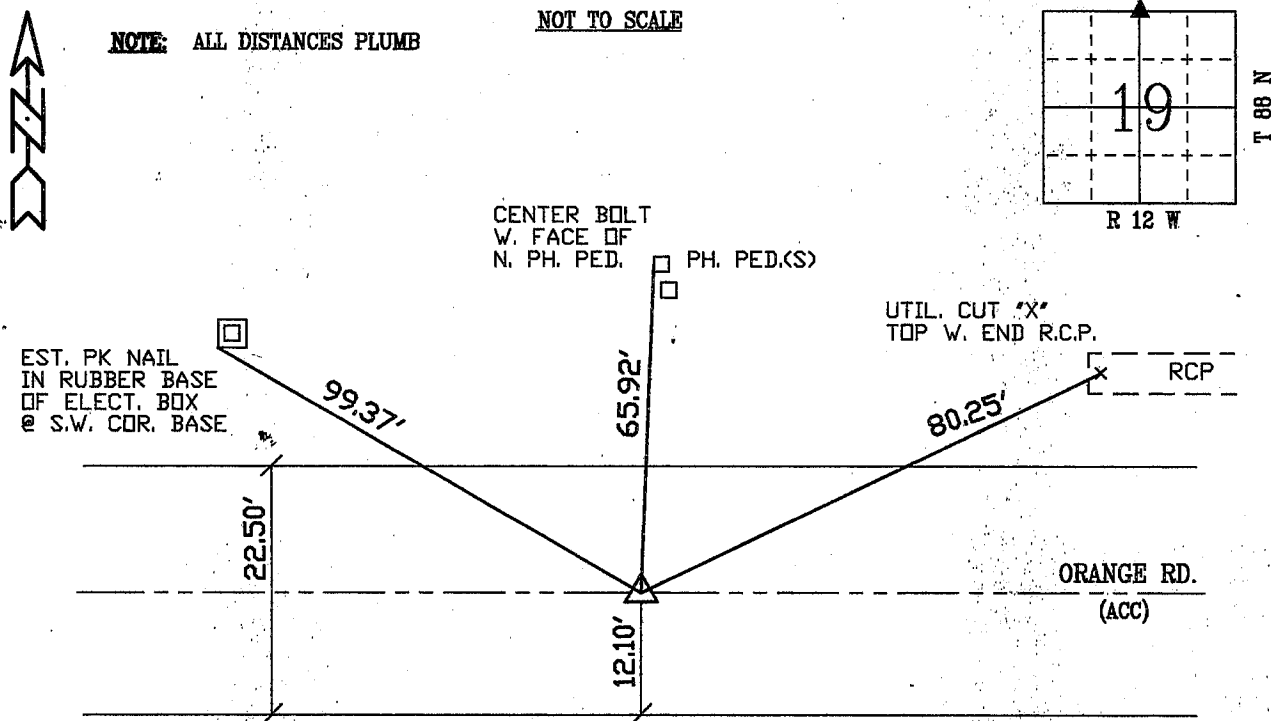
UNITED STATES PUBLIC LAND SURVEY CORNER CERTIFICATE OF  
Land Survey Monuments situated in Section 19, Township 88 N,  
Range 12 W, of the Fifth Principal Meridian, BLACK HAWK County, Iowa.  
Previously recorded in Misc. Book 317, Page 571, in County Recorder's Office.

(Show reason for preparing this certificate, the evidence and detailed procedures used in establishing the corner positions and monumentation found or placed.)

Monument Description and Remarks: FND 3/4" RBR. @ SURF. ACC - AFTER  
2"-3" MILLING - FND 5/8" RBR. LOC. 26" DP. TRUE & STABLE. EST.  
5/8" x 24" L. RBR. (FLUSH w/ MILLED SURF.) & 2" ALUM. CAP STAMPED  
"B.H. CO. LAND CORNER." 5 1/2" ACC. SURF. PER PLAN.  
FINAL MONUMENTATION EST. 5/8" x 6" L RBR. FLUSH w/ACC SURF. LOC. 0.70'  
N. OF C ACC JOINT.

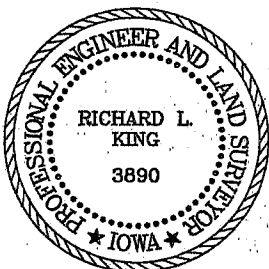
### PLAN - VIEW

(Show a minimum of three reference ties to durable physical objects, relevant monuments and physical conditions that will enable recovery of the corner.)



FIELD SURVEY: G.T. & G.S. 07/08/99  
PREPARED BY: G.S. 08/19/99

### CERTIFICATION



I hereby certify that this land surveying document was prepared and the related survey work was performed by me or under my direct personal supervision and that I am a duly licensed Land Surveyor under the laws of the State of Iowa.

Richard L. King 9/7/99  
Richard L. King (date)

License Number 3890

My license renewal date is December 31, 1999

Pages or sheets covered by this seal:

This Land Corner Certificate Only.

### LIST CORNERS TO BE INDEXED

Corner	Section	Township	Range
N. 1/4	19	88 N	12 W

BOOK 335 PAGE 736