

SC MISC
INDEX
MARGIN
PROOF
COPY

BLACK HAWK COUNTY IOWA: SS
Filed for record Jan 17, 1997 at
1:00 P.M. and recorded in Book 323
of MISC Page 646

13383

Catherine J. Loo

Recorder

Fee 1-5.00/

RECD & RET TO RYKEN ENGINEERING

Harlan K. Schuck, RLS, 711 Park Avenue, Ackley, IA 50601 Ph 515-847-3273

UNITED STATES PUBLIC LAND SURVEY CORNER CERTIFICATE

OF

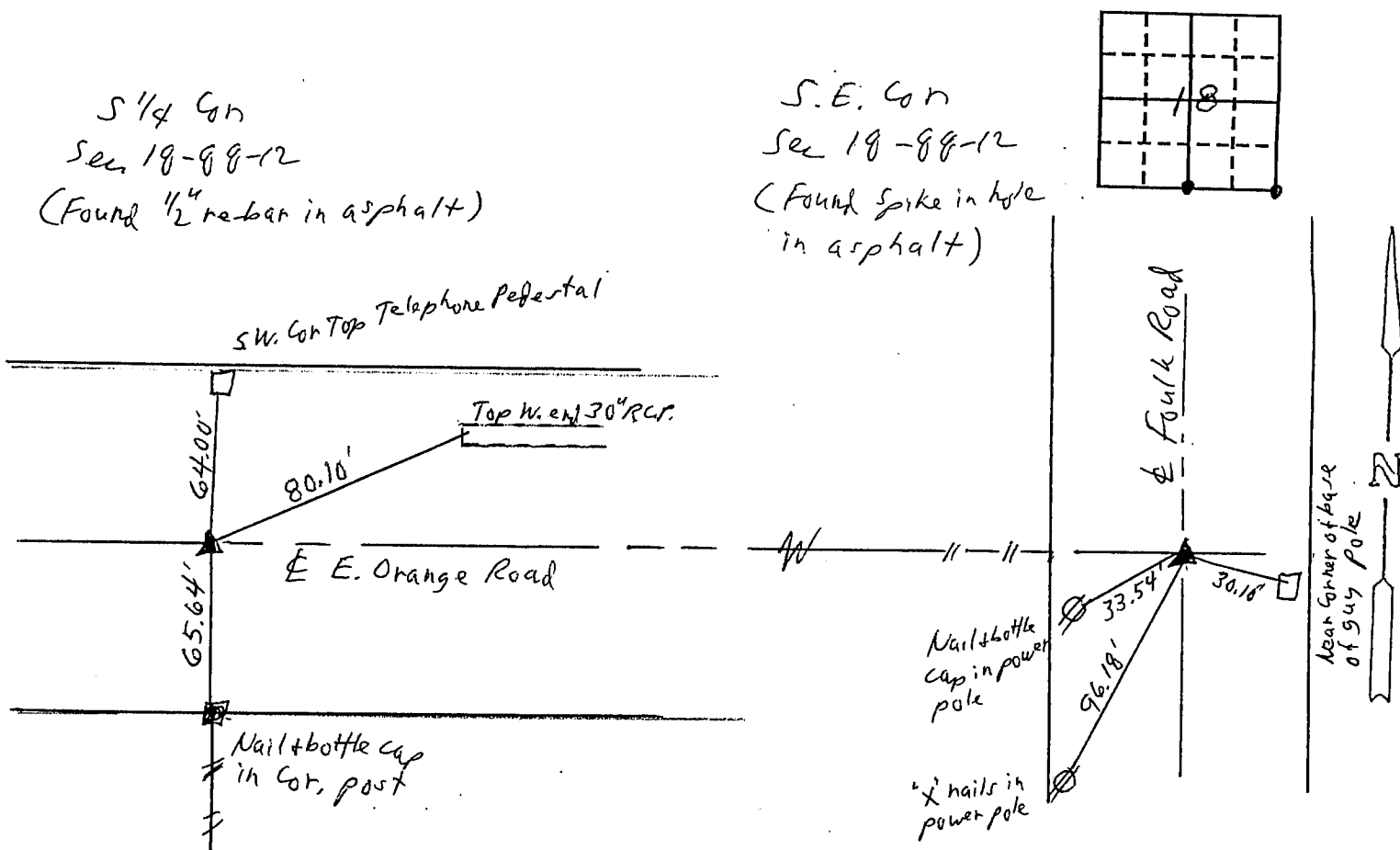
Land Survey Monuments situated in Section 18, Township 88, Range 12, of the Fifth Principal Meridian, Black Hawk County, Iowa.
Previously recorded in Not Applicable in County Recorder's Office.
(book, page, document number, etc.)

(Show reason for preparing this certificate, the evidence and detailed procedures used in establishing the corner positions and monumentation found or placed.)

Monument Description and Remarks:

PLAN - VIEW

(Show a minimum of three reference ties to durable physical objects, relevant monuments and physical conditions that will enable recovery of the corner.)



I hereby certify that the survey work was completed and this land surveying document was prepared by me or under my direct personal supervision and that I am a duly registered land surveyor under the laws of the state of Iowa

Signature: Harlan K. Schuck

Name typed or printed: Harlan K. Schuck

Date: 12/18/96 Reg. No. 9962

My registration renewal date is December 31, 1997

SEAL



Corners	List Corners to be Indexed		
	Section	Twp	Range
S 1/4	18	88	12
SE	18	88	12

BOOK 323 PAGE 646