

SC  
MISC  
INDEX *PC*  
MARGIN  
PROOF  
COMPARE

BLACK HAWK COUNTY IOWA:SS  
Filed for record Aug 3, 19 98 at  
2:30 P.M. and recorded in Book 331  
of MISC Page 41  
*Christina J. Jess* Recorder  
FEE 1-5.00/  
SANDY BRUSTKERN  
5422 FOULK RD WATERLOO IA 50702

2546

SLSI 9-90

Kirk D. Eschliman, P.L.S. Iowa Lic. No. 9961, 723 Broadway Street, Waterloo, Iowa 50703 - Phone: 319-234-0509

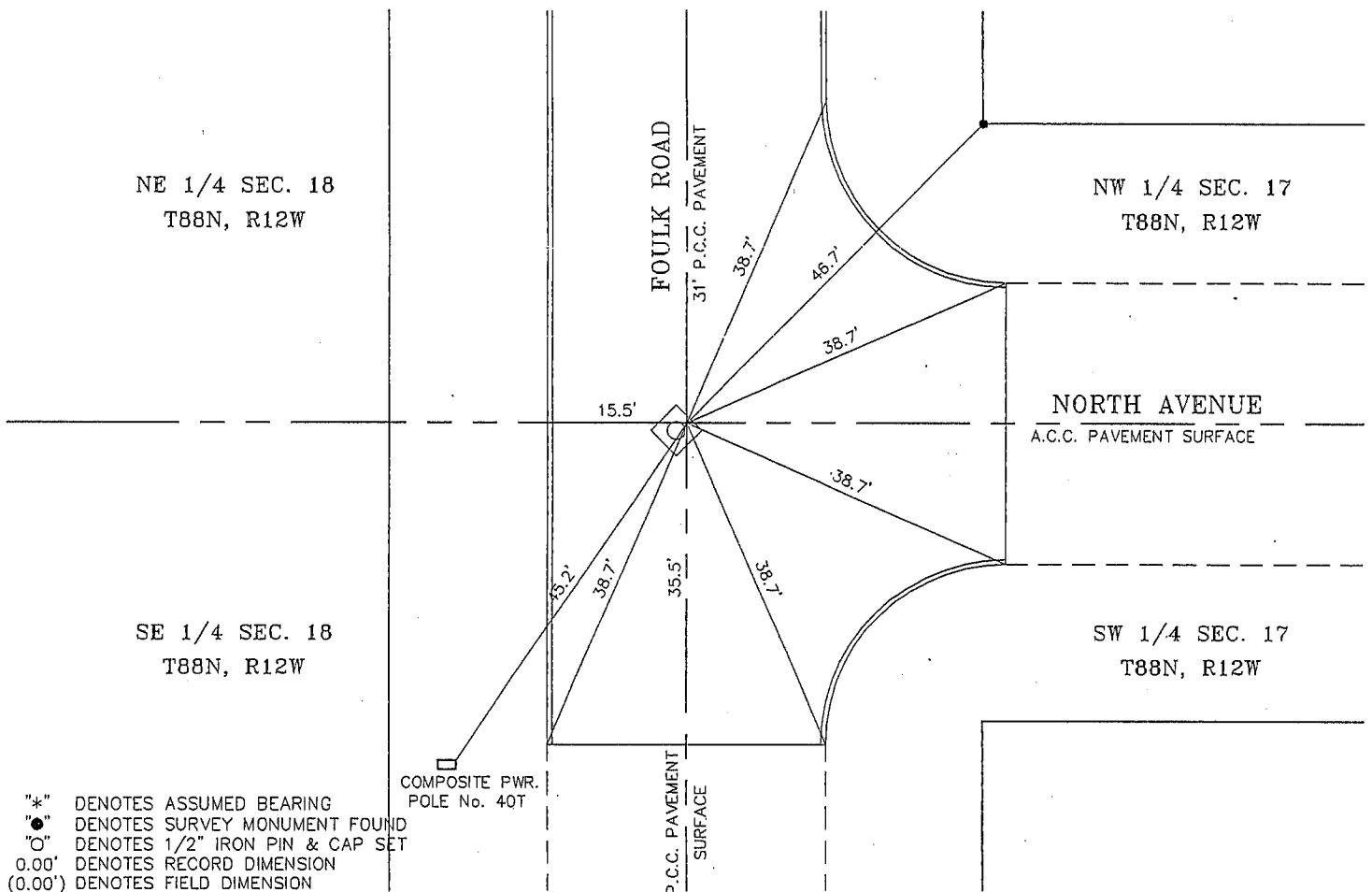
# UNITED STATES PUBLIC LAND SURVEY CORNER CERTIFICATE OF

Land Survey Monuments situated in Section 18, Township 88 NORTH, Range 12 WEST, of the Fifth Principal Meridian, BLACK HAWK County, Iowa. Previously recorded in (NOT PREVIOUSLY RECORDED) of the County Recorder's Office. (book, page, document number, etc.)

(Show reason for preparing this certificate, the evidence and detailed procedures used in establishing the corner positions and monumentation found or placed.)

Monument Description and Remarks: PREVIOUS MONUMENT OF RECORD (05/29/41) HAD BEEN DESTROYED DURING CONSTRUCTION OF THE NEW PAVEMENT ON FOULK ROAD. POINT WAS RE-ESTABLISHED FROM RIGHT OF WAY MONUMENTS ON FOULK ROAD, AND THE NORTHEAST SECTION CORNER WITH THE SOUTHEAST SECTION CORNER. SET NAIL IN A.C.C. AROUND SANITARY MANHOLE BOXOUT IN FOULK ROAD P.C.C. PAVEMENT.

## PLAN - VIEW



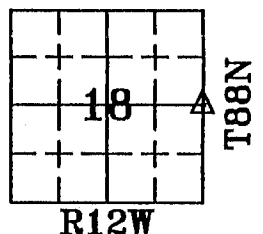
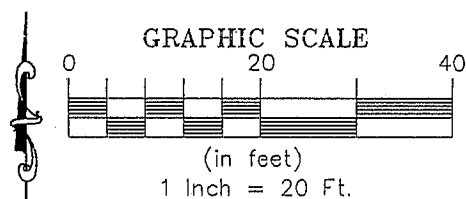
I HEREBY CERTIFY THAT THIS LAND SURVEYING DOCUMENT WAS PREPARED BY ME OR UNDER MY DIRECT PERSONAL SUPERVISION AND THAT I AM A DULY LICENSED LAND SURVEYOR UNDER THE LAWS OF THE STATE OF IOWA.

*Kirk D. Eschliman*

DATE: 06/09/97

KIRK D. ESCHLIMAN, P.L.S. IOWA LIC. NO. 9961  
MY LICENSE RENEWAL DATE IS DECEMBER 31, 1997

SEAL:



### LIST OF CORNERS TO BE INDEXED

Corners	Section	Township	Range
E 1/4	18	88	12

HEINICK ENGINEERING GROUP, INC.  
CIVIL ENGINEERS & LAND SURVEYORS WITH OFFICES IN WATERLOO & CEDAR FALLS, IOWA  
DRAWN BY: K.D.E. REF.: FILE: 97A33C11.DWG BK.: PG.:  
DATE: 06/09/97 C.A.D.D. PROJECT NO.: 97A33