

Paul H. Helland, 1107 Technology Parkway, Cedar Falls, Iowa 50613-6951, (319)-266-0161

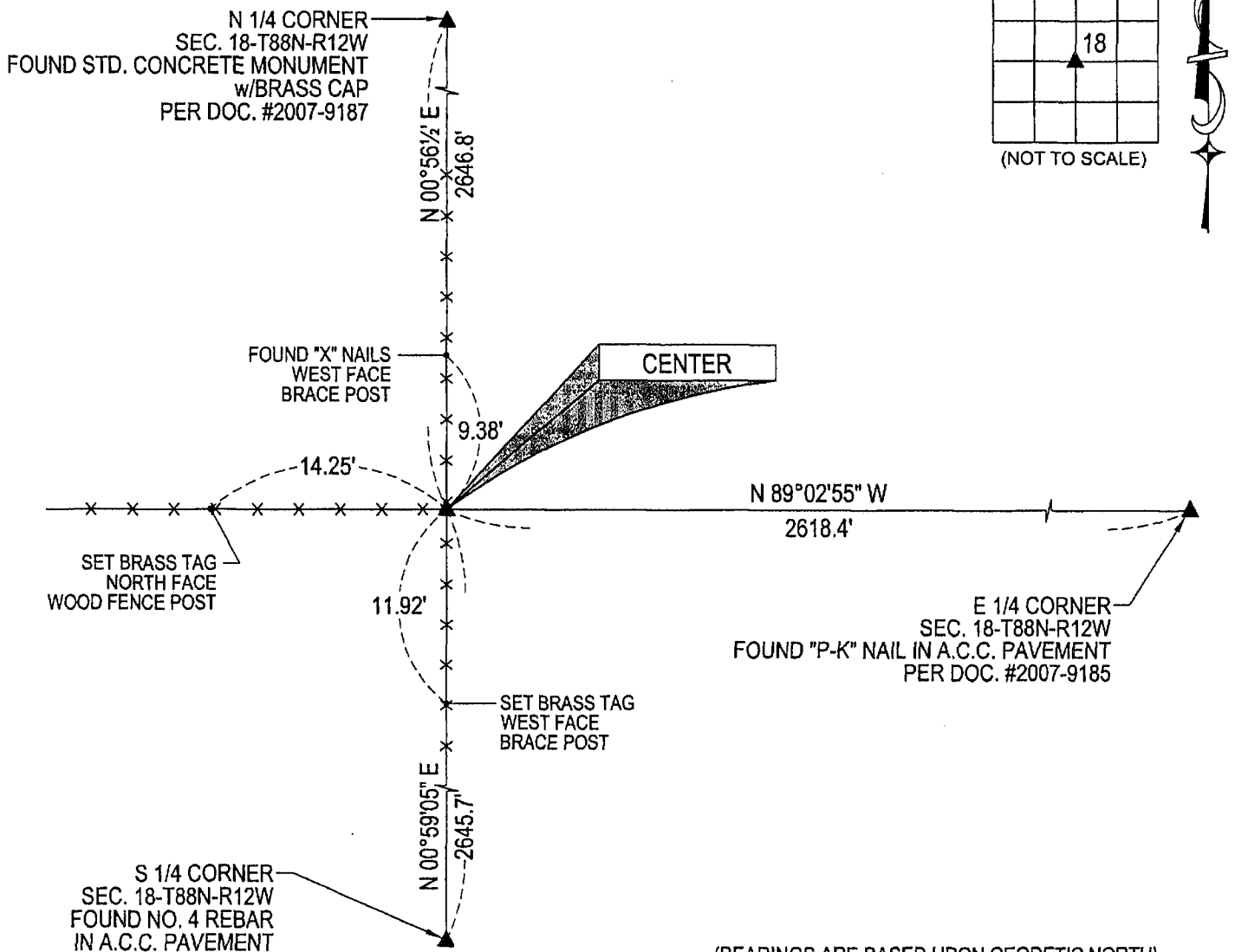
UNITED STATES PUBLIC LAND SURVEY CORNER CERTIFICATE
OFLAND SURVEY MONUMENTS SITUATED IN SECTION NO. 18, TOWNSHIP NO. 88 NORTH, RANGE
NO. 12 WEST OF THE FIFTH PRINCIPAL MERIDIAN, BLACK HAWK COUNTY, IOWA.
PREVIOUSLY RECORDED IN N/A(SHOW REASON FOR PREPARING THIS CERTIFICATE, THE EVIDENCE AND DETAILED PROCEDURES USED IN ESTABLISHING THE
CORNER POSITIONS AND MONUMENTATION FOUND OR PLACED.)

MONUMENT DESCRIPTION AND REMARKS:

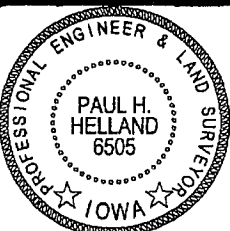
NO USPLSCC ON FILE. SURVEY COMPLETED IN THE NE 1/4 OF SEC. 18-T88N-R12W.

→ **CENTER:** GEORGE MILLER COUNTY SURVEYOR BOOK IN AUDITOR'S OFFICE PAGE 43 DATED 5/5/1856
INDICATES [STONE] AT THE CENTER OF SECTION, NO DISTANCES SHOWN IN ANY DIRECTION. IDOT
REFERENCE TIES DATED 3/28/1979 CALLS FOR [FOUND IRON PIN w/CAP RLS #7034]. FOUND NO. 4 REBAR
w/YPC #7034 LYING ON ITS SIDE. PROBED IN VICINITY OF SAID REBAR AND FOUND 0.5'x0.5'(TOP VIEW)x1.0'±
LIMESTONE, 0.3' DEEP. UTILIZED HIGH POINT OF SAID LIMESTONE, SET NO. 4 REBAR w/OPC #6505 0.1' SOUTH
OF SAID HIGH POINT FOR MAGNETIC DETECTION.

PLAN VIEW

(SHOW A MINIMUM OF THREE REFERENCE TIES TO DURABLE PHYSICAL OBJECTS, RELEVANT MONUMENTS AND PHYSICAL
CONDITIONS THAT WILL ENABLE RECOVERY OF THE CORNER.)

(BEARINGS ARE BASED UPON GEODETIC NORTH)

HELLAND ENGINEERING & SURVEYING, LTD.
1107 Technology Parkway
Cedar Falls, Iowa 50613-6951
(319)-266-0161SHINER = 8D NAIL & 1 5/16"Ø METAL SHINER
BRASS TAG = 13/16"Ø BRASS TAG
OPC = PLASTIC CAP (O=ORANGE, R=RED, Y=YELLOW)
(00') RECORDED AS FILE NAME: 07-186C1.DWGI hereby certify that this land surveying document was prepared
and the related survey work was performed by me or under my
direct personal supervision and that I am a duly licensed Land
Surveyor under the laws of the State of Iowa.Paul H. Helland
License Number 6505
My license renewal date is December 31, 2009.
All pages or sheets are covered by this seal except:

LIST CORNERS TO BE INDEXED

CORNER	SECTION	TOWNSHIP	RANGE
CENTER	18	88N	12W

Ret