



Doc ID: 010446100001 Type: GEN
Recorded: 05/05/2022 at 12:12:13 PM
Fee Amt: \$7.00 Page 1 of 1
Black Hawk County Iowa
SANDIE L. SMITH RECORDER

File 2022-00021397

Env
X

WAYNE CLAASSEN ENGINEERING AND SURVEYING, INC.
P.O. BOX 898 WATERLOO, IOWA 50704-0898

PHONE: (VOICE) 319-235-6294
(FAX) 319-235-0028

UNITED STATES PUBLIC LAND SURVEY CORNER CERTIFICATE

Land Survey Monuments situated in Section 17, Township 88 North, Range 12 West, of the Fifth Principal Meridian, Black Hawk County, Iowa.

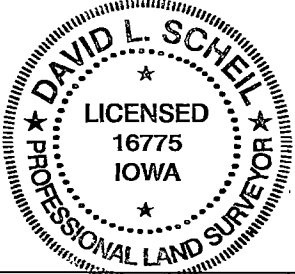
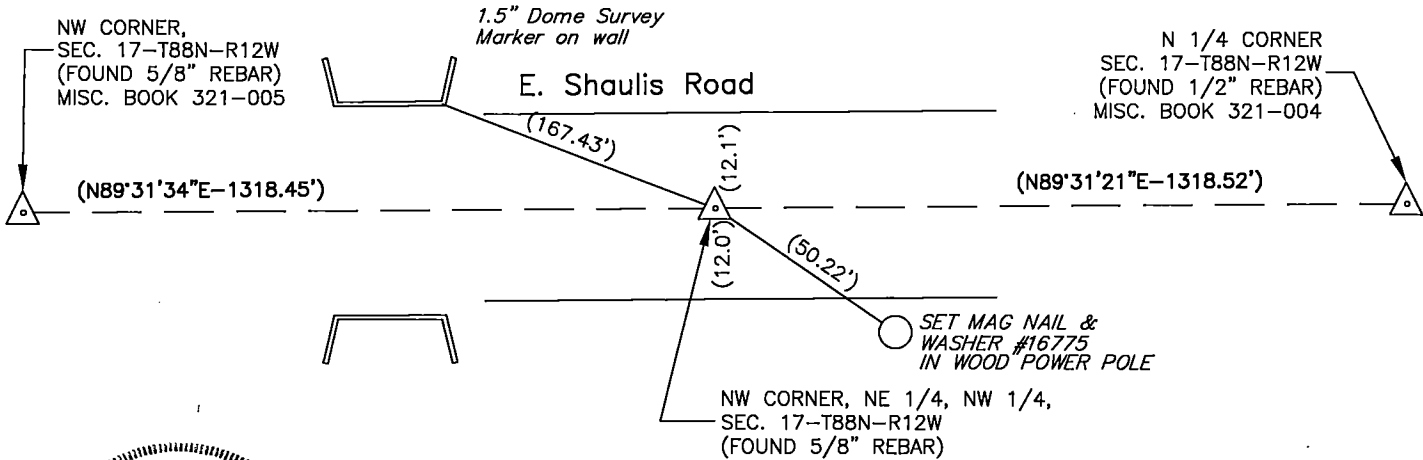
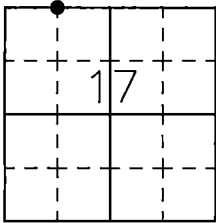
Previously recorded in _____ in County Recorder's Office.
(book, page, document number, etc.)

Monument Description and Remarks

Went to location of corner and found a 5/8" rebar at midpoint of the NW corner and N 1/4 corner of Section 17.

PLAN - VIEW

- Reason for filing certificate:
- ☒ There is no certificate on file with the Recorder's Office.
 - ☐ Accepts corner position which differs from the one shown in above document.
 - ☐ The corner monument was replaced or modified.
 - ☐ The reference ties in above document were incorrect or missing.



Iowa State Plane Coordinate System
(North Zone, 2011 Adj.)
N= 3626839.6
E= 5252339.2
(for location purposes only)

I hereby certify that this land surveying document was prepared and the related survey work was performed by me or under my direct personal supervision and that I am a duly Licensed Land Surveyor under the laws of the State of Iowa.

Signature: David L. Scheil
David L. Scheil, L.S.

Date: MAY 02, 2022 Lic. No. 16775

Pages or Sheets Covered by this Seal: THIS SHEET ONLY.

My license renewal date is December 31, 2022

SEAL

List Corners to be Indexed

Corners	Section	Twp	Range
NW CORNER, NE 1/4, NW 1/4,	17	88 N	12 W
SW CORNER, SE 1/4, SW 1/4,	08	88 N	12 W