

SC
MISC
INDEX
MARGIN
PROOF
COMPARE

BLACK HAWK COUNTY IOWA:SS
Filed for record Dec 11, 19 98 at
11:30 A.M. and recorded in Book 332
of MISC Page 550
Christina J. Lass Recorder
FEE 1-5.00/
WAYNE CLAASSEN ENGINEERING AND SURVEYING, INC.

WAYNE CLAASSEN ENGINEERING AND SURVEYING, INC.
P.O. BOX 898 WATERLOO, IOWA 50704-0898

PHONE: (VOICE) 319-235-6294
(FAX) 319-235-0028

UNITED STATES PUBLIC LAND SURVEY CORNER CERTIFICATE

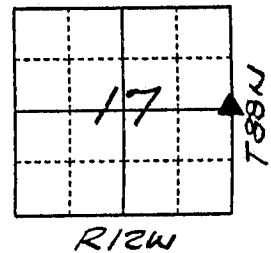
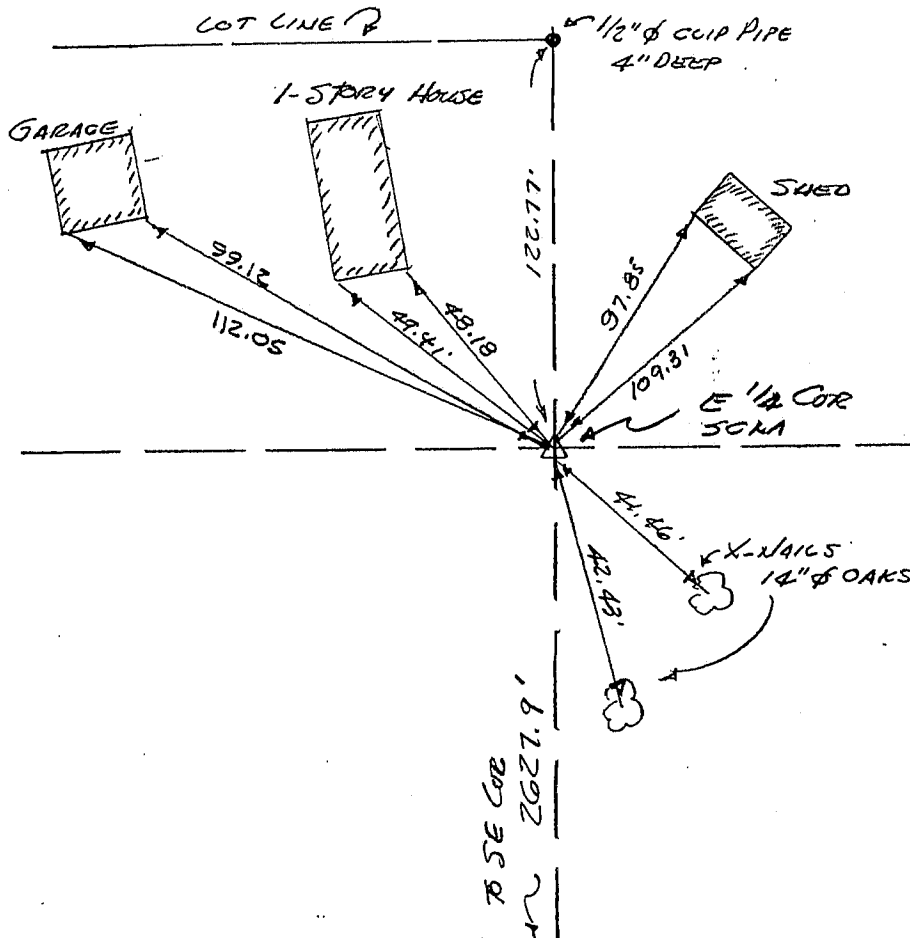
Land Survey Monuments situated in Section 17, Township 88N, Range 12W, of the Fifth Principal Meridian, BLACK HAWK County, Iowa.
Previously recorded in N/A in County Recorder's Office.
(book, page, document number, etc.)

(Show reason for preparing this certificate, the evidence and detailed procedures used in establishing the corner positions and monumentation found or placed.)

Monument Description and Remarks FOUND SCMA, 6" DEEP PER CUPA NOTES, SET 1/2" Ø
REBAR ON NO. SIDE MON. @ 1" BELOW TOP, SET "SURVEY MARKER" SIGN 1'
SOUTH. NOTE: DISTANCES TO BUILDINGS ARE TO EXTREME OUTSIDE CORNERS AT
6' ABOVE GROUND - EDM DIST. EAST 1/4 CORNER

PLAN - VIEW

(Show a minimum of three reference ties to durable physical objects, relevant monuments and physical conditions that will enable recovery of the corner.)

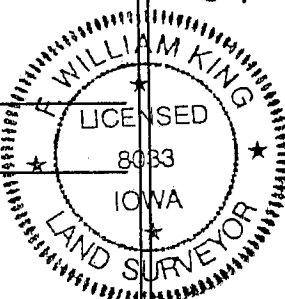


507-26

I hereby certify that the survey work was completed and this certificate was prepared by me or under my direct personal supervision and that I am a duly licensed land surveyor under the laws of the state of Iowa.

Signature: F. William King
(Name typed or printed:) F. WILLIAM KING

Date: DEC. 10, 1998 Lic. No. 8033



List Corners to be Indexed

Corners	Section	Twp	Range
E 1/4	17	88N	12W

SEAL

BOOK 332 PAGE 550