

enr
WAYNE CLAASSEN ENGINEERING AND SURVEYING, INC.
P.O. BOX 898 WATERLOO, IOWA 50704-0898

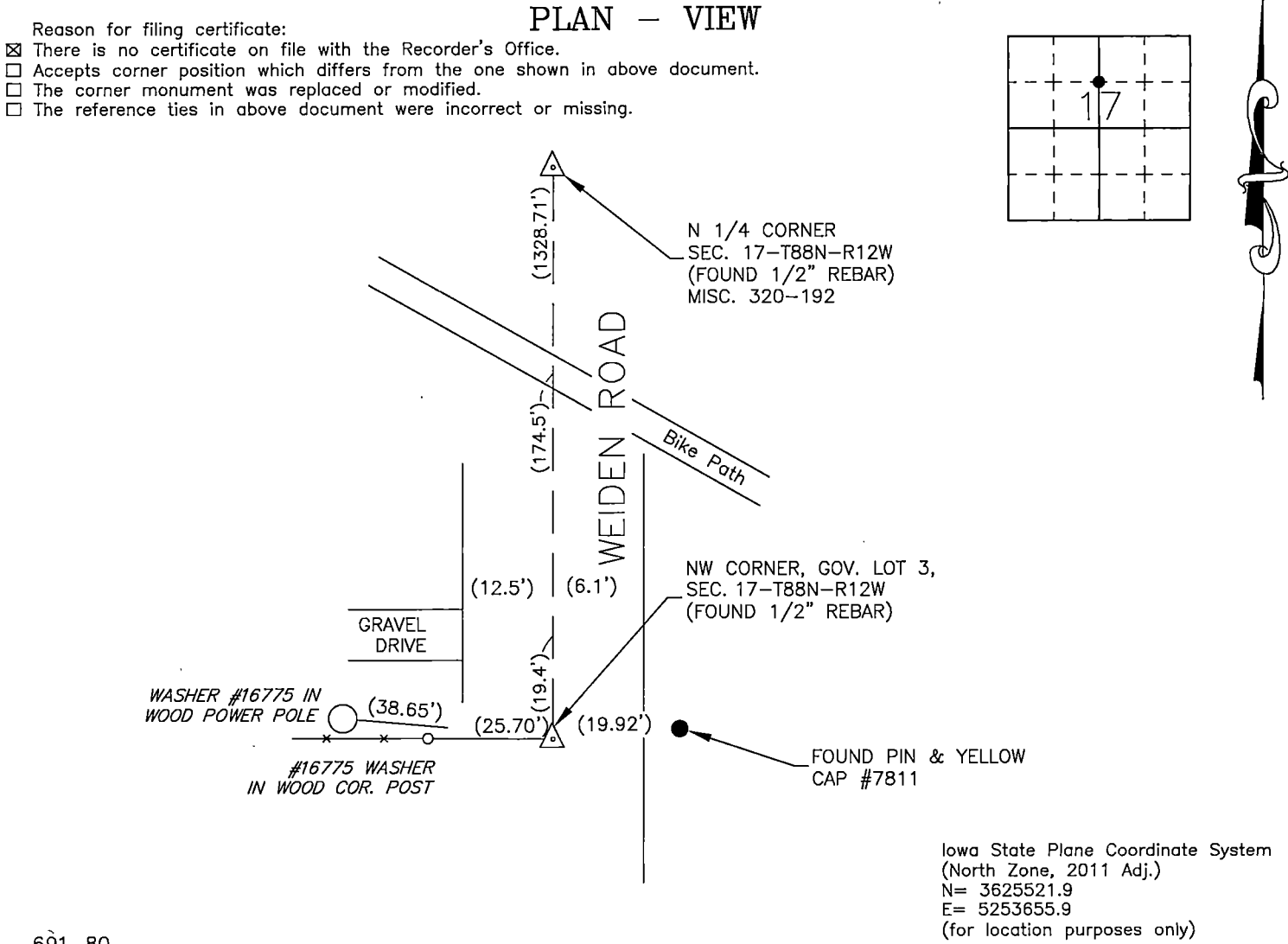
PHONE: (VOICE) 319-235-6294
(FAX) 319-235-0028

UNITED STATES PUBLIC LAND SURVEY CORNER CERTIFICATE

Land Survey Monuments situated in Section 17, Township 88 North, Range 12 West, of the Fifth Principal Meridian, Black Hawk County, Iowa.
Previously recorded in _____ in County Recorder's Office.
(book, page, document number, etc.)

Monument Description and Remarks

Went to location and found 1/2" just below pavement as per Document No. 2005-11981 and other survey plats.



691-80

I hereby certify that this land surveying document was prepared and the related survey work was performed by me or under my direct personal supervision and that I am a duly Licensed Land Surveyor under the laws of the State of Iowa.

Signature: David L. Scheil
David L. Scheil, L.S.
Date: OCT. 19, 2020 Lic. No. 16775
Pages or Sheets Covered by this Seal: THIS SHEET ONLY.
My license renewal date is December 31, 2020
SEAL

List Corners to be Indexed			
Corners	Section	Twp	Range
NW CORNER, GOV. LOT 03	17	88 N	12 W

