

Michael R. Fagle

BLACK HAWK COUNTY RECORDER

EARTH TECH 501 SYCAMORE ST SUITE 222 WATERLOO IA 50703

Michael R. Fagle, L.S.

Earth Tech, 501 Sycamore St., Suite 222, Waterloo, Iowa 50703

I-319-232-6531

UNITED STATES PUBLIC LAND SURVEY CORNER CERTIFICATE
OF

Land Survey Monuments situated in Section 16, Township 88 North,
Range 12 West, of the Fifth Principal Meridian, BLACK HAWK
County, Iowa. Previously recorded in _____
in County Recorder's Office. (Book, Page, Document Number, etc.)

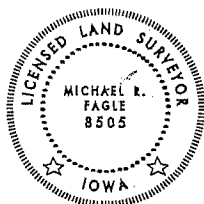
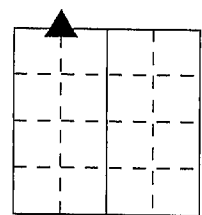
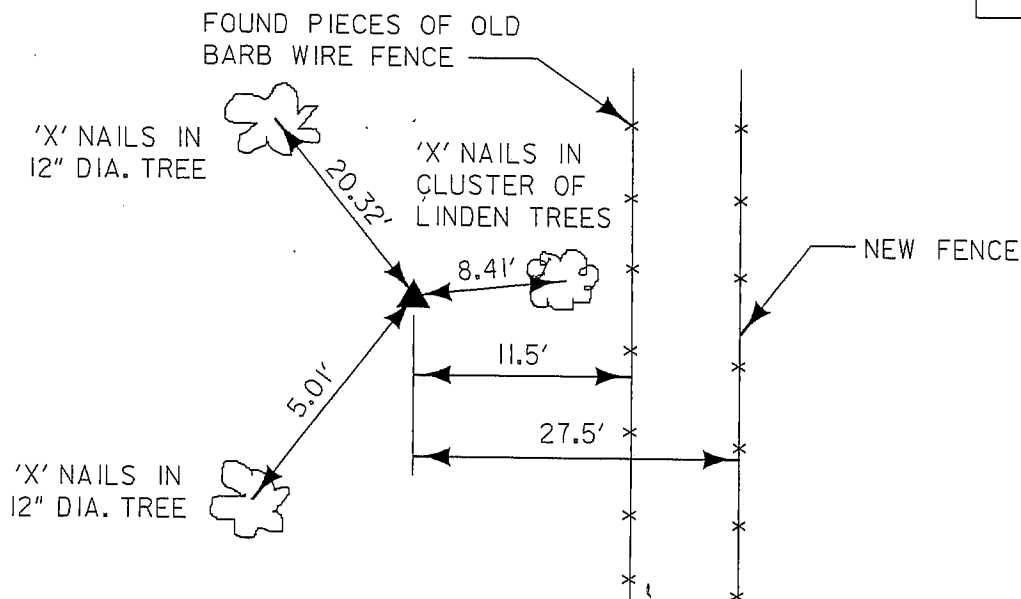
(Show reason for preparing this certificate, the evidence and detailed procedures used in establishing the corner positions and monumentation found or placed.)

Monument Description and Remarks: SET 1/2" REBAR WITH YELLOW PLASTIC CAP NO. 8505
INSIDE 2" STEEL PIPE, ALSO SET MARKER STEEL FENCE POST 6" SOUTH OF CORNER.
CORNER LOCATION WAS ESTABLISHED FROM 1941 RANDOM CHAIN NOTES.

PLAN - VIEW

(Show a minimum of three reference ties to durable physical objects, relevant monuments and physical conditions that will enable recovery of the corner.)

ALL MEASUREMENTS ARE PLUMBED



I hereby certify that this Land Surveying document was prepared by me or under my direct personal supervision and that I am a duly Licensed Land Surveyor under the laws of the State of Iowa.

Michael R. Fagle 11-20-02
MICHAEL R. FAGLE Date

License number 8505

My license renewal date is December 31, 2002

Pages or sheets covered by this seal:
THIS SHEET

List Corners to be Indexed

Corners	Section	Twp	Range
NW CORNER OF THE NE 1/4 OF THE NW 1/4	16	T 88 N	R 12 W