

PREPARED BY: BLACK HAWK COUNTY ENGINEERS OFFICE PH.# (319) 833-3008
316 E. FIFTH STREET, ROOM 211 WATERLOO, IOWA 50703 FAX.# (319) 833-3139
SLSI 9-94
CERT 12-96

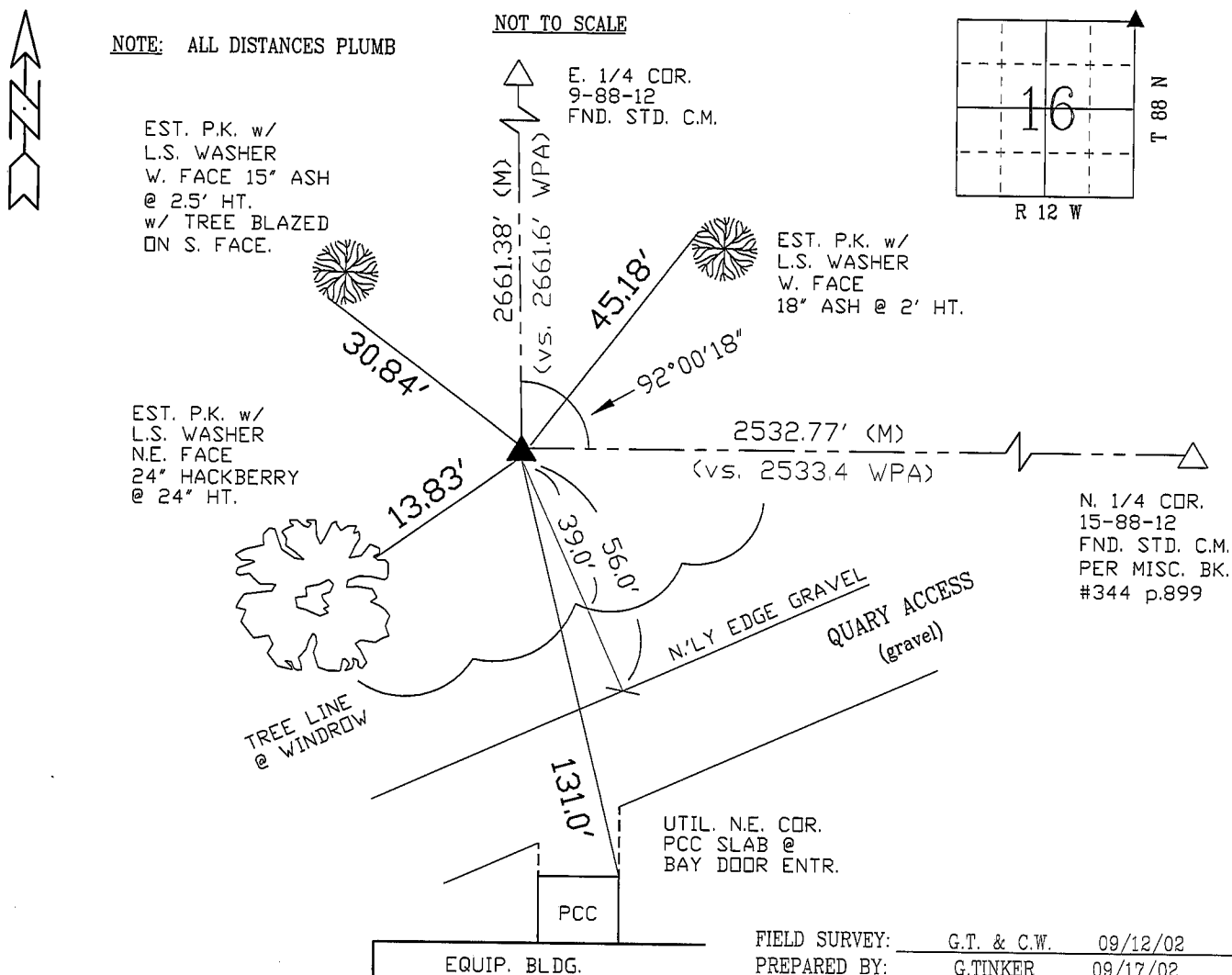
UNITED STATES PUBLIC LAND SURVEY CORNER CERTIFICATE OF
Land Survey Monuments situated in Section 16, Township 88 N,
Range 12 W, of the Fifth Principal Meridian, BLACK HAWK County, Iowa.
Previously recorded in Misc. Book N/A, Page N/A, in County Recorder's Office.

(Show reason for preparing this certificate, the evidence and detailed procedures used in establishing the corner positions and monumentation found or placed.)

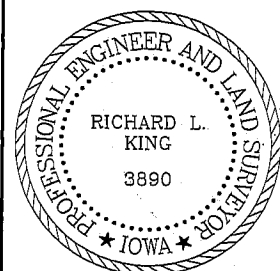
Monument Description and Remarks: FOUND 1/2" REBAR w/ DATED ORANGE
CAP LOCATED 2" ABOVE GROUND, @ 0.2' N. & 0.6' E. OF CALC'ED RECORD
WPA DBL. DIST. INTERSECTION FROM N. & E. 1/4 CORNERS.
CORNER ASSUMED OVER STD. WPA C.M., PER PROBE TO SOLID OBJECT.
CORNER RECOVERED TO ASSIST. w/ RECOVERY OF N. LINE SAID SECTION 16.
DIST. MEAS. FROM "RTK GPS" OBSERVATIONS TO N. AND E. 1/4 CORNERS.

PLAN - VIEW

(Show a minimum of three reference ties to durable physical objects, relevant monuments and physical conditions that will enable recovery of the corner.)



CERTIFICATION



I hereby certify that this land surveying document was prepared and the related survey work was performed by me or under my direct personal supervision and that I am a duly licensed Land Surveyor under the laws of the State of Iowa.

Richard L. King 9/17/02
Richard L. King (date)
License Number 3890

My license renewal date is December 31, 2003

Pages or sheets covered by this seal:

This Land Corner Certificate Only.

LIST CORNERS TO BE INDEXED

Corner	Section	Township	Range
N.E.	16	88 N	12 W
N.W.	15	88 N	12 W
S.E.	9	88 N	12 W
S.W.	10	88 N	12 W