



Doc ID: 003756740001 Type: GEN
Recorded: 05/01/2009 at 01:54:36 PM
Fee Amt: \$7.00 Page 1 of 1
Instr# 200800025572
Black Hawk County Iowa
JUDITH A MCCARTHY RECORDER
Book 1080 Page 37747- 37747
File **2009-00020625**

*WAYNE CLAASSEN ENGINEERING AND SURVEYING, INC.
P.O. BOX 898 WATERLOO, IOWA 50704-0898

PHONE: (VOICE) 319-235-6294
(FAX) 319-235-0028

UNITED STATES PUBLIC LAND SURVEY CORNER CERTIFICATE

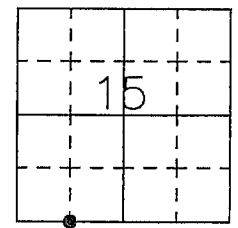
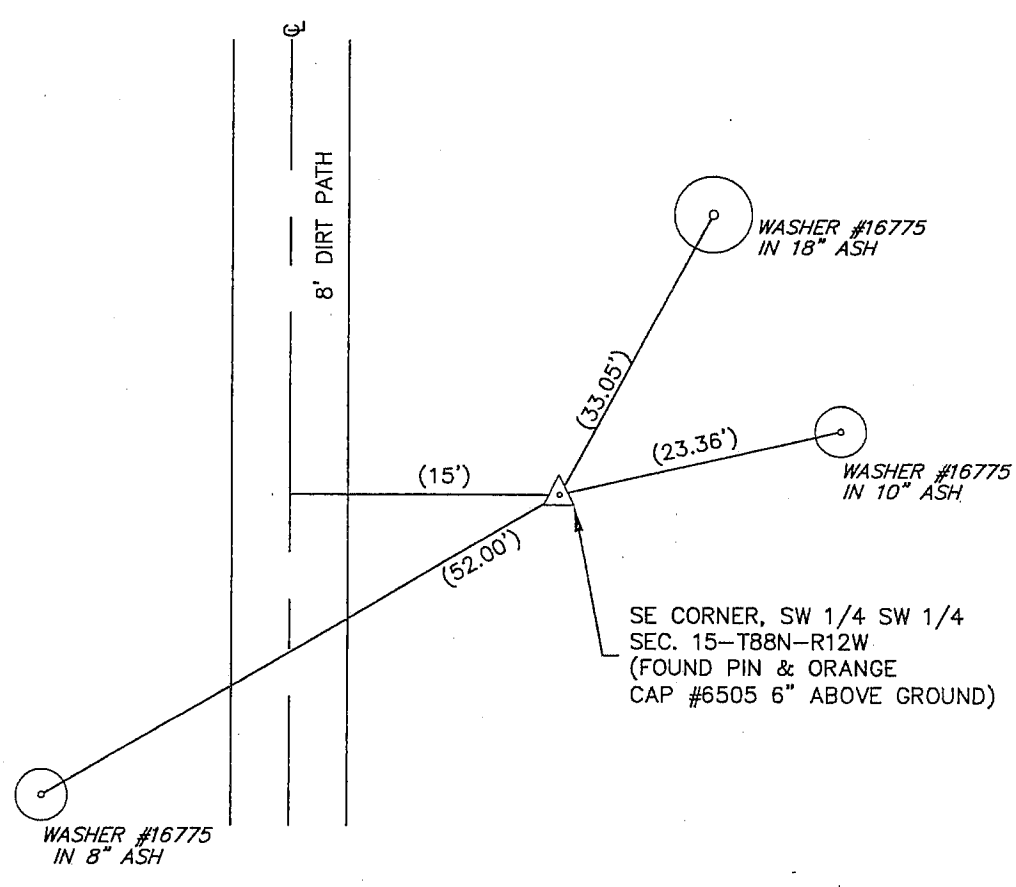
Land Survey Monuments situated in Section 15, Township 88 North, Range 12 West, of the Fifth Principal Meridian, Black Hawk County, Iowa.

Previously recorded in _____ in County Recorder's Office.
(book, page, document number, etc.)

Monument Description and Remarks

No certificate on file. Found pin and orange cap #6505 6" above ground as per R. E. Oesterle Subdivision filed June, 1980.

PLAN - VIEW



BK 624, PG. 80

I hereby certify that this land surveying document was prepared and the related survey work was performed by me or under my direct personal supervision and that I am a duly Licensed Land Surveyor under the laws of the State of Iowa.

Signature: David L. Scheil
David L. Scheil, LS

Date: APRIL 29, 2009 Lic. No. 16775

Pages or Sheets Covered by this Seal: THIS SHEET ONLY.

My license renewal date is December 31, 2010

SEAL

List Corners to be Indexed

Corners	Section	Twp	Range
SE CORNER,	15	88 N	12 W
SW 1/4 SW 1/4			

RS 5-109 \$7.00