

WAYNE CLAASSEN ENGINEERING AND SURVEYING, INC.  
P.O. BOX 898 WATERLOO, IOWA 50704-0898

PHONE: (VOICE) 319-235-6294  
(FAX) 319-235-0028

UNITED STATES PUBLIC LAND SURVEY CORNER CERTIFICATE

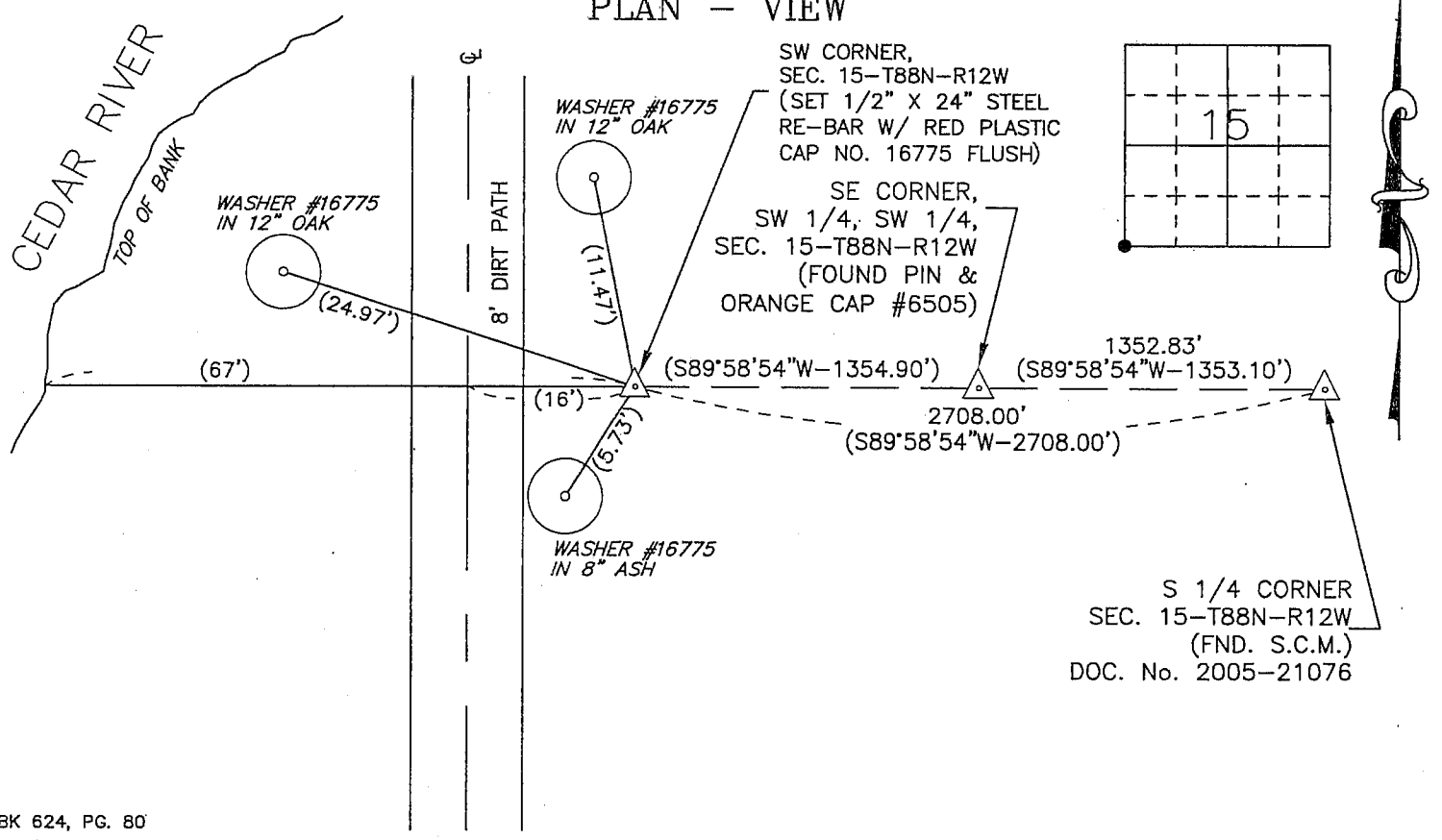
Land Survey Monuments situated in Section 15, Township 88 North, Range 12 West, of the Fifth Principal Meridian, Black Hawk County, Iowa.

Previously recorded in \_\_\_\_\_ in County Recorder's Office.  
(book, page, document number, etc.)

Monument Description and Remarks

No certificate on file. Survey plat of the S 1/2 of the SW 1/4 of section 15-88-12 dated June 10, 1866 does not show what was found at the SW corner. WPA notes from the Black Hawk County Engineer's Office dated June 23, 1941 state the following:  
"Found nothing, no bearing trees left, no indication such as local physical features as to where corner should be. Est. corner according to old survey records, on double 1/4 dist. NE 20 & N 1/4 21, & 7.1' North of right of those points & double 1/4 dist. NE 28 to E 1/4 21 & 14.50' East of right line over those points; this puts the corner 2703.9' W. of N 1/4 22 & 52.55' N. of right line N 1/4 22 & NE 22. The Point of establishment fits the closest conditions of proration original Gov. survey records, since those are only records available to the corner. The Section line to the North cuts Cedar River twice, no evidence found of Section line & therefore is not used at all as control."  
On October 30, 2008 backhoe was brought to the site to excavate for evidence. At occupied (estimated) location of corner, dug 10'x10'x6' deep hole and found nothing. Also 30' north and 36' north of occupied (estimated) location dug two 8'x5'x6' deep holes and found nothing. Set 1/2" rebar and red cap #16775 on a line from the S 1/4 corner of section 15 to the Southeast corner of the SW 1/4, of the SW 1/4, of section 15 a distance of 2708.00' from the S 1/4 corner of section 15 according to the ties shown on R. E. Oesterle Subdivision, dated June, 1980.

PLAN - VIEW



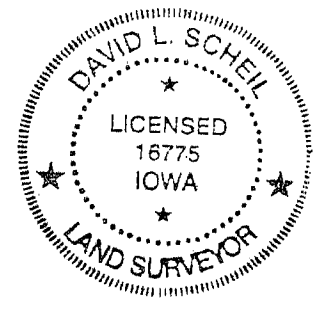
BK 624, PG. 80

I hereby certify that this land surveying document was prepared and the related survey work was performed by me or under my direct personal supervision and that I am a duly Licensed Land Surveyor under the laws of the State of Iowa.

Signature: David L. Scheil  
David L. Scheil, L.S.  
Date: APRIL 29, 2009 Lic. No. 16775  
Pages or Sheets Covered by this Seal: THIS SHEET ONLY.  
My license renewal date is December 31, 2010  
SEAL

List Corners to be Indexed

Corners	Section	Tw	Range
SW CORNER,	15	88 N	12 W



5-109 \$7.00