

**WAYNE CLAASSEN ENGINEERING AND SURVEYING, INC.**  
P.O. BOX 898 WATERLOO, IOWA 50704-0898

PHONE: (VOICE) 319-235-6294  
(FAX) 319-235-0028

## UNITED STATES PUBLIC LAND SURVEY CORNER CERTIFICATE

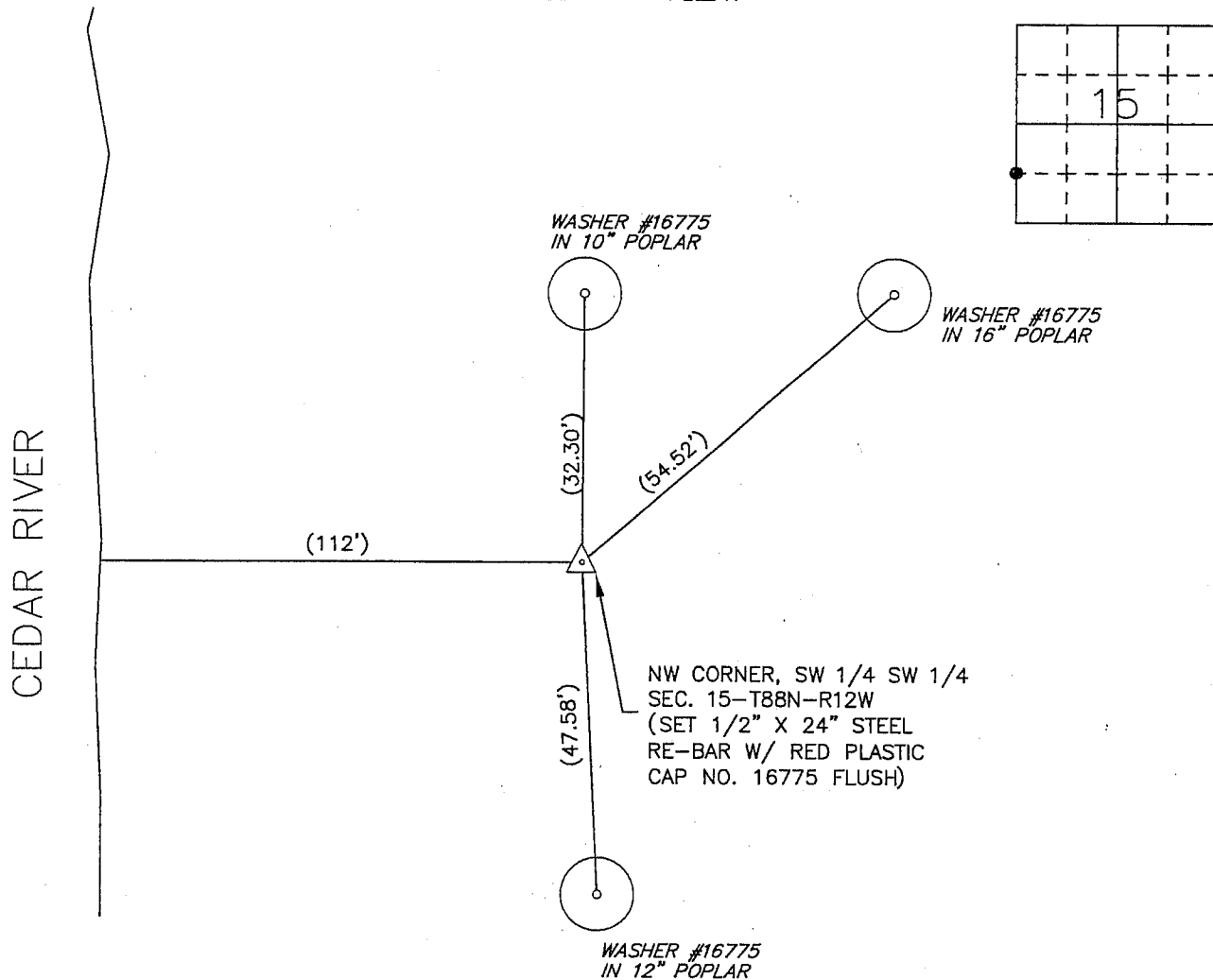
Land Survey Monuments situated in Section 15, Township 88 North, Range 12 West, of the Fifth Principal Meridian, Black Hawk County, Iowa.

Previously recorded in \_\_\_\_\_ in County Recorder's Office.  
(book, page, document number, etc.)

### Monument Description and Remarks

No certificate on file. Set 1/2" x 24" steel rebar and red cap #16775 at midpoint between West 1/4 corner of section 15 and the Southwest corner of section 15.

### PLAN - VIEW



BK. 624, PG. 80.

I hereby certify that this land surveying document was prepared and the related survey work was performed by me or under my direct personal supervision and that I am a duly Licensed Land Surveyor under the laws of the State of Iowa.

Signature: \_\_\_\_\_

David L. Scheil, L.S.

Date: APRIL 29, 2009 Lic. No. 16775

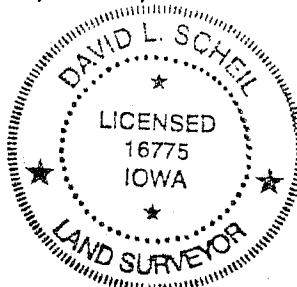
Pages or Sheets Covered by this Seal: THIS SHEET ONLY.

My license renewal date is December 31, 2010

SEAL

### List Corners to be Indexed

Corners	Section	Twp	Range
NW CORNER, SW 1/4 SW 1/4	15	88 N	12 W



RS 5-109 \$7.00