

PROOF FILED FOR RECORD MAR 14 2005 AT 4:00 P. M. FEE 1-5.00-1.00/

COMPARED

Patricia A. Jess

BLACK HAWK COUNTY RECORDER

KESS & ASSOCIATES

Kirk D. Eschliman, P.L.S. Iowa Lic. No. 9961, 723 Broadway Street, Waterloo, Iowa 50703 - Phone: 319-234-0509

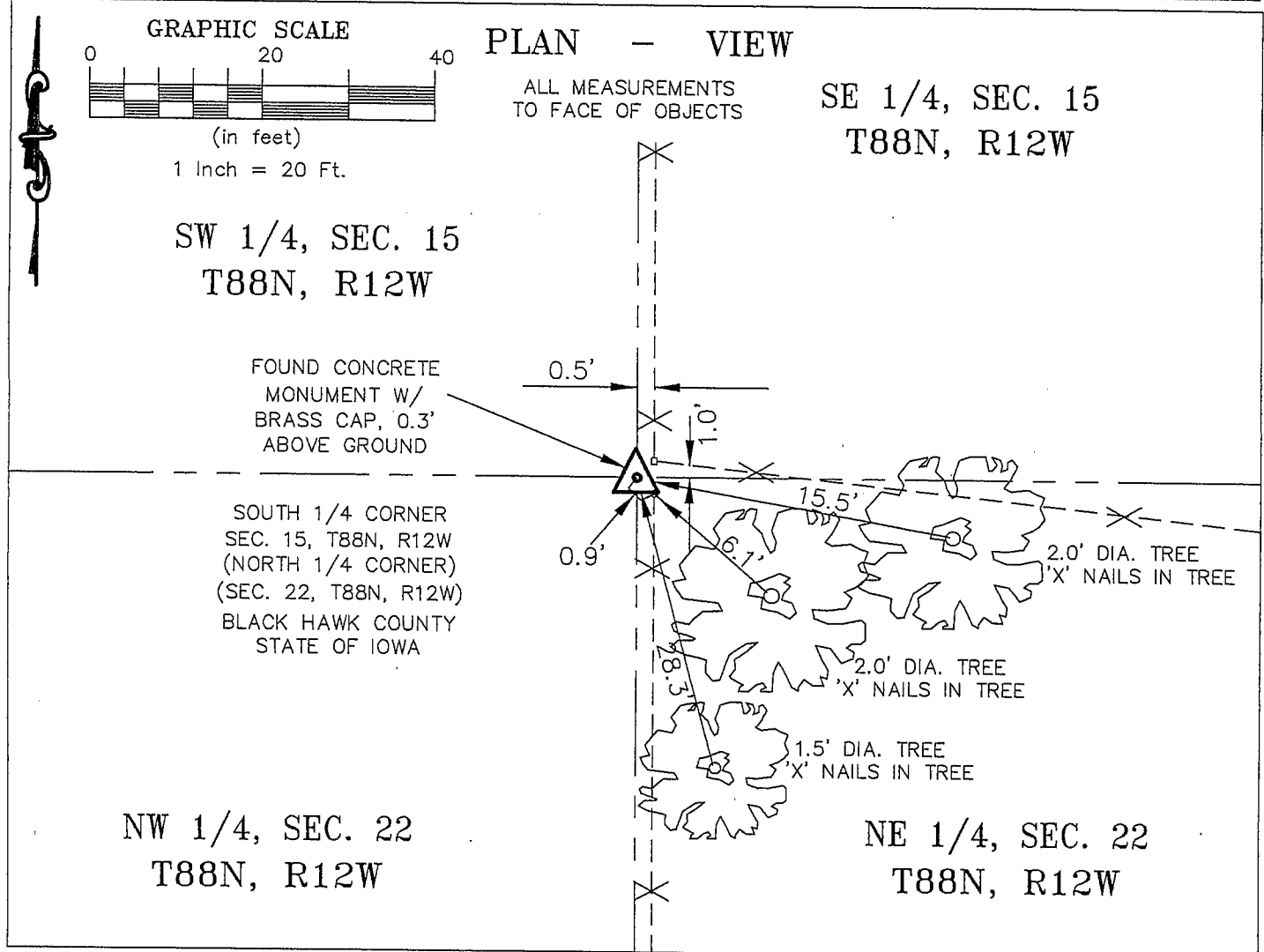
UNITED STATES PUBLIC LAND SURVEY CORNER CERTIFICATE
OFLAND SURVEY MONUMENTS SITUATED IN SECTION FIFTEEN (15), TOWNSHIP EIGHTY-EIGHT (88) NORTH
RANGE TWELVE (12) WEST, OF THE FIFTH PRINCIPAL MERIDIAN, BLACK HAWK COUNTY, IOWA.
PREVIOUSLY RECORDED IN (NOT PREVIOUSLY RECORDED) (BOOK, PAGE, DOCUMENT NUMBER, ETC.) IN THE COUNTY RECORDER'S OFFICE.

(SHOW REASON FOR PREPARING THIS CERTIFICATE, THE EVIDENCE AND DETAILED PROCEDURES USED IN ESTABLISHING THE CORNER POSITIONS AND MONUMENTATION FOUND OR PLACED.)

MONUMENT DESCRIPTION AND REMARKS:

FOUND 4"x4" CONCRETE MONUMENT WITH BRASS CAP 0.3' ABOVE GROUND SURFACE

CURRENT SECTION CORNER CERTIFICATE NOT ON FILE IN THE BLACK HAWK COUNTY ENGINEER'S OFFICE

I HEREBY CERTIFY THAT THIS LAND SURVEYING DOCUMENT
WAS PREPARED AND RELATED SURVEY WORK WAS
PERFORMED BY ME OR UNDER MY DIRECT PERSONAL
SUPERVISION AND THAT I AM A DULY LICENSED LAND
SURVEYOR UNDER THE LAWS OF THE STATE OF IOWA.*Kirk D. Eschliman*

DATE: 03/14/2005

KIRK D. ESCHLIMAN, P.L.S. IOWA LIC. NO. 9961
MY LICENSE RENEWAL DATE IS DECEMBER 31, 2005
PAGES OR SHEETS COVERED BY THIS SIGNATURE & SEAL: SHEET 1 OF 1FOR: LES JENSEN & WANDA BORGWARDT
918 BROOKSIDE DR.
EVANS DALE, IOWA 50707REQ. BY: DOUGLAS V. COONRAD, ATTY.
HUDSON, IOWAKESS & ASSOCIATES, INC.
PROFESSIONAL LAND SURVEYORS: 723 BROADWAY, WATERLOO, IOWA 50703-5811

DATE: 2/08/2005 C.A.D.D. FILE: 05A06SCC1.DWG PROJECT NO.: 05A06

List of corners to be indexed:

Corners	Section	Township	Range
S 1/4	15	T88N	R12W

