



Doc ID: 008305390001 Type: GEN  
Recorded: 12/27/2017 at 03:51:35 PM  
Fee Amt: \$7.00 Page 1 of 1  
Black Hawk County Iowa  
SANDIE L. SMITH RECORDER

File **2018-00010986**

Kyle J. Helland, 1107 Technology Parkway, Cedar Falls, Iowa 50613-6951, (319)-266-0161

## UNITED STATES PUBLIC LAND SURVEY CORNER CERTIFICATE OF

LAND SURVEY MONUMENTS SITUATED IN SECTION NO. 15, TOWNSHIP NO. 88 NORTH, RANGE  
NO. 12 WEST OF THE FIFTH PRINCIPAL MERIDIAN, BLACK HAWK COUNTY, IOWA.

PREVIOUSLY RECORDED IN N/A.

(SHOW REASON FOR PREPARING THIS CERTIFICATE, THE EVIDENCE AND DETAILED PROCEDURES USED IN ESTABLISHING THE  
CORNER POSITIONS AND MONUMENTATION FOUND OR PLACED.)

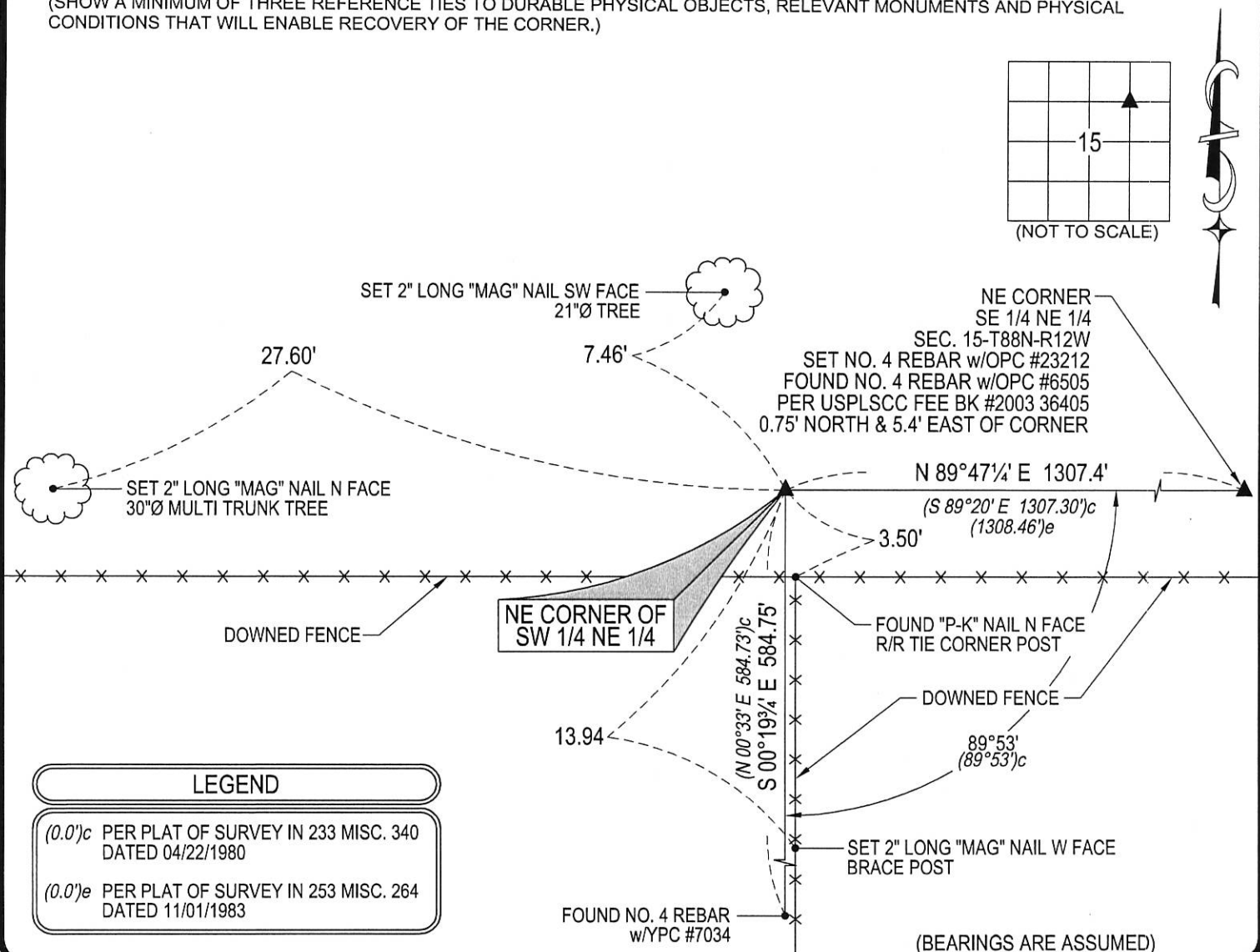
### MONUMENT DESCRIPTION AND REMARKS:

NO USPLSCC ON FILE. SURVEY COMPLETED IN THE NE 1/4 OF SEC. 15-T88N-R12W.

→ **NE CORNER OF SW 1/4 NE 1/4:** NO BLACK HAWK COUNTY ENGINEER REFERENCE TIES AVAILABLE. PLAT OF  
SURVEY IN MISC. BOOK 233 PAGE 340 DATED 04/22/1980 CALLS FOR [SET 1/2" REBAR WITH PLASTIC #7034  
CAP]. SEARCHED AREA, FOUND NO. 4 REBAR w/ILLEGIBLE YPC (0.2' ABOVE GRADE).

### PLAN VIEW

(SHOW A MINIMUM OF THREE REFERENCE TIES TO DURABLE PHYSICAL OBJECTS, RELEVANT MONUMENTS AND PHYSICAL  
CONDITIONS THAT WILL ENABLE RECOVERY OF THE CORNER.)



#### LEGEND

(0.0')<sub>c</sub> PER PLAT OF SURVEY IN 233 MISC. 340  
DATED 04/22/1980

(0.0')<sub>e</sub> PER PLAT OF SURVEY IN 253 MISC. 264  
DATED 11/01/1983

(BEARINGS ARE ASSUMED)



HELLAND ENGINEERING & SURVEYING, LTD.  
1107 Technology Parkway  
Cedar Falls, Iowa 50613-6951  
(319)-266-0161

SHINER = 8d. NAIL & 1 5/16"Ø METAL SHINER DRAWN BY: JBL  
BRASS TAG = 8d. NAIL & 13/16"Ø BRASS TAG  
OPC = PLASTIC CAP (O=ORANGE, R=RED, Y=YELLOW)  
(00') RECORDED AS FILE NAME: 17-232-35.DWG



I hereby certify that this land surveying document was prepared  
and the related survey work was performed by me or under my  
direct personal supervision and that I am a duly licensed  
Professional Land Surveyor under the laws of the State of Iowa.

*Kyle J. Helland* 12/15/17  
Kyle J. Helland  
License Number 23212  
My license renewal date is December 31, 2017.  
All pages or sheets are covered by this seal except:

#### LIST CORNERS TO BE INDEXED

CORNER	SECTION	TOWNSHIP	RANGE
NE COR. SW 1/4 NE 1/4	15	88N	12W
SE COR. NW 1/4 NE 1/4	15	88N	12W
SW COR. NE 1/4 NE 1/4	15	88N	12W
NW COR. SE 1/4 NE 1/4	15	88N	12W