



Doc ID: 004363070001 Type: GEN
Kind: CORNER
Recorded: 01/06/2011 at 02:01:59 PM
Fee Amt: \$0.00 Page 1 of 1
Black Hawk County Iowa
JUDITH A MCCARTHY RECORDER

File 2011-00013721

PREPARED BY: BLACK HAWK COUNTY ENGINEERS OFFICE
316 E. FIFTH STREET, ROOM 211 WATERLOO, IOWA 50703

PH.# (319) 833-3008
FAX.# (319) 833-3139
SLSI 9-94
BHCO 03-09

UNITED STATES PUBLIC LAND SURVEY CORNER CERTIFICATE OF
Land Survey Monuments situated in Section 15, Township 88 N,
Range 12 W, of the Fifth Principal Meridian, BLACK HAWK County, Iowa.
Previously recorded in Fee Book 2003, Page 07847, in County Recorder's Office.

(Show reason for preparing this certificate): The corner monument has been Replaced or Modified, per Ia. Code 355.11(1)(c)

(Evidence and detailed procedures used in establishing the corner position(s) and monumentation found or placed.)

Monument Description and Remarks: N.E. COR. 15-T88-R12 (vs. 22 error, 05/03/17 g.t.)
FND. 5/8" REBAR AS DENOTED, PRIOR TO 2009 H.M.A. RESURF. PROJECT. CORNER PREV.
RECOVERED TO ASSIST W/ RECOVERY OF CORNERS IN SECTION'S 9 & 16 OF SAID
TOWNSHIP, PER CUR. RECORD. NORTH LINE OF N.E. 1/4 OF SAID SECT. NOT OBSERVED,
AND FOR HIST. REF. ONLY. AFTER H.M.A. RESURF. PROJ., COR. NOW IN HMA PVMT. OF S.R.
APPROACH, BEING RESET #5 RBR. & ALIGNED E.-W. C.L. RD. @ ±22.8' E. OF C.L. RAY. RD.
(N.-S.). CORNER ALSO PREV. REF. PER PLS #6505 FOR N.1/16E COR. FEE BK. 2003-36405.
ADDITIONAL REF. TO C.L. RD. GEOM. NOTED WITH THIS CERT., AS FND. AND REPLACED PER
IaDOT AS-BUILT PLANS DTD. 1959 FOR PROJ. #F-1000(2). C.L. TANG. GEOM. DETAILED AS
PART OF LAND CORNER REF., WITH ANY UPDATED X-TIES TO P.I.'s / P.O.T.'s AS DENOTED.

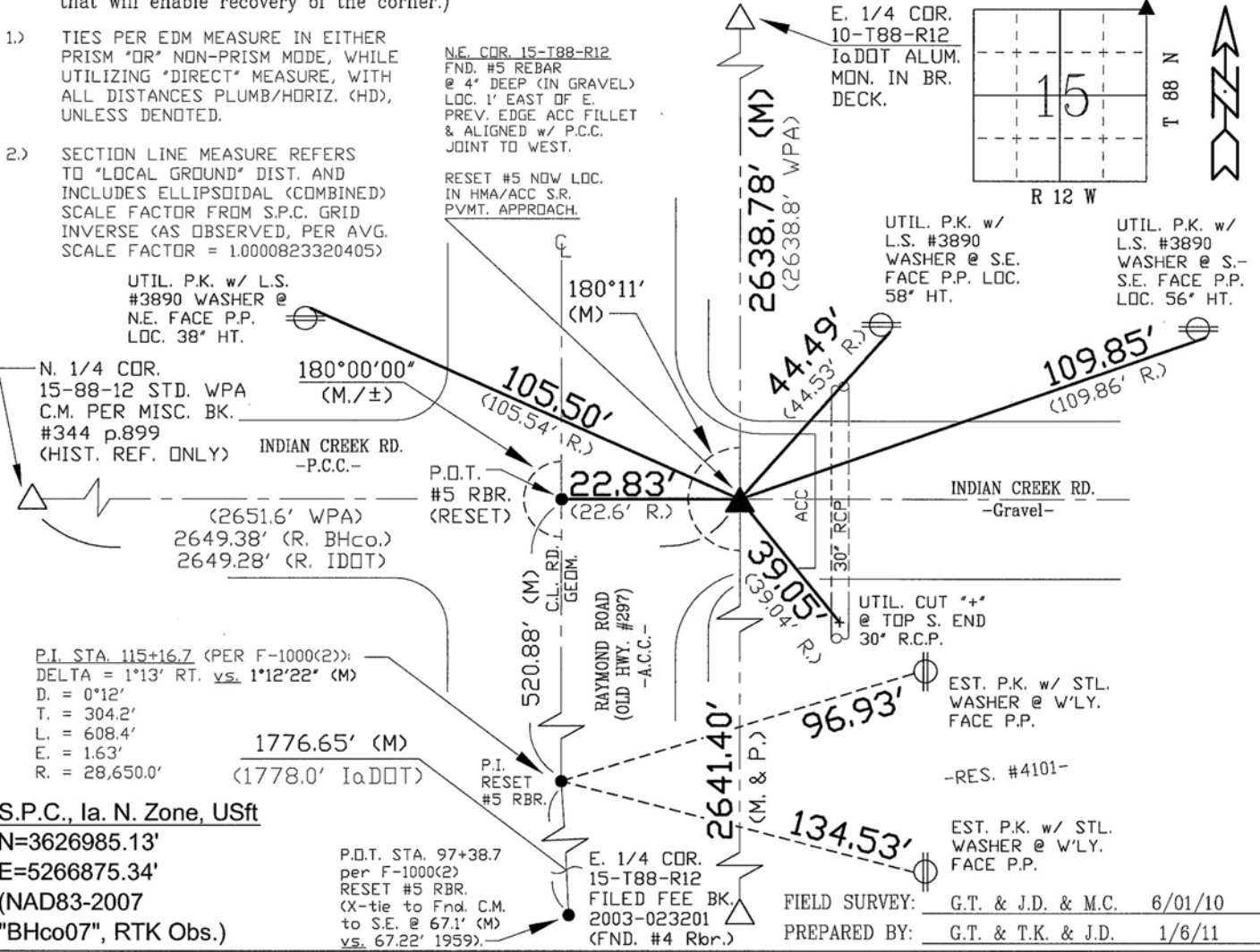
NOTE: ALL DISTANCES PLUMB/HORIZ.
(H.D.), "UNLESS DENOTED".

PLAN VIEW
"NOT TO SCALE"

BHco Hist. Ties: BK. #1001 p.15 88-12
FIELD BOOK: BHco. #489 p.p. 1-2

(Show a minimum of three reference ties to durable physical objects, relevant monuments and physical conditions that will enable recovery of the corner.)

- 1.) TIES PER EDM MEASURE IN EITHER PRISM "OR" NON-PRISM MODE, WHILE UTILIZING "DIRECT" MEASURE, WITH ALL DISTANCES PLUMB/HORIZ. (HD), UNLESS DENOTED.
- 2.) SECTION LINE MEASURE REFERS TO "LOCAL GROUND" DIST. AND INCLUDES ELLIPSOIDAL (COMBINED) SCALE FACTOR FROM S.P.C. GRID INVERSE (AS OBSERVED, PER AVG. SCALE FACTOR = 1.0000823320405)



CERTIFICATION



I hereby certify that this land surveying document was prepared and the related survey work was performed by me or under my direct personal supervision and that I am a duly licensed Land Surveyor under the laws of the State of Iowa.

Geoffrey Allen Tinker 01/06/2011
Geoffrey Allen Tinker (date)

License Number 15748
My license renewal date is December 31, 2012
Pages or sheets covered by this seal:
This Land Corner Certificate Only.

LIST CORNERS TO BE INDEXED

Corner	Section	Township	Range
N.E. Cor.	15	88 N	12 W
N.W. Cor.	14	88 N	12 W
S.E. Cor.	10	88 N	12 W
S.W. Cor.	11	88 N	12 W

INDEX OF ABBREVIATIONS

(M) = "Measured" Dimension
(P) = "Platted" Dimension
(R) = "Record" Dimension
(C) = "Calculated" Dimension
(GS) = Iowa Geodetic Survey
(WPA) = Works Progress Admin. Survey
"G" = per George Miller Survey (BHco Surveyor 1858-1860)
"B" = per John Ball Survey (BHco Surveyor 1866-1891)
"N" = per Nathan Barber Survey (BHco Surveyor 1908-1931)

"NP" = Reflectorless EDM Meas.
"MLM" = Indirect Measure
"CM" = Concrete Monument
"SM" = Survey Marker Spike/Tag
"PK" = PK/MAG Nail Brand Style

PREPARED BY: BLACK HAWK COUNTY ENGINEERS OFFICE
316 E. FIFTH STREET, ROOM 211 WATERLOO, IOWA 50703

PH.# (319) 833-3008
FAX.# (319) 833-3139
SLSI 9-94
BHCO 03-09

UNITED STATES PUBLIC LAND SURVEY CORNER CERTIFICATE OF
Land Survey Monuments situated in Section 15, Township 88 N,
Range 12 W, of the Fifth Principal Meridian, BLACK HAWK County, Iowa.
Previously recorded in Fee Book 2003, Page 07847, in County Recorder's Office.

(Show reason for preparing this certificate): The corner monument has been Replaced or Modified, per Ia. Code 355.11(1)(c)

(Evidence and detailed procedures used in establishing the corner position(s) and monumentation found or placed.)

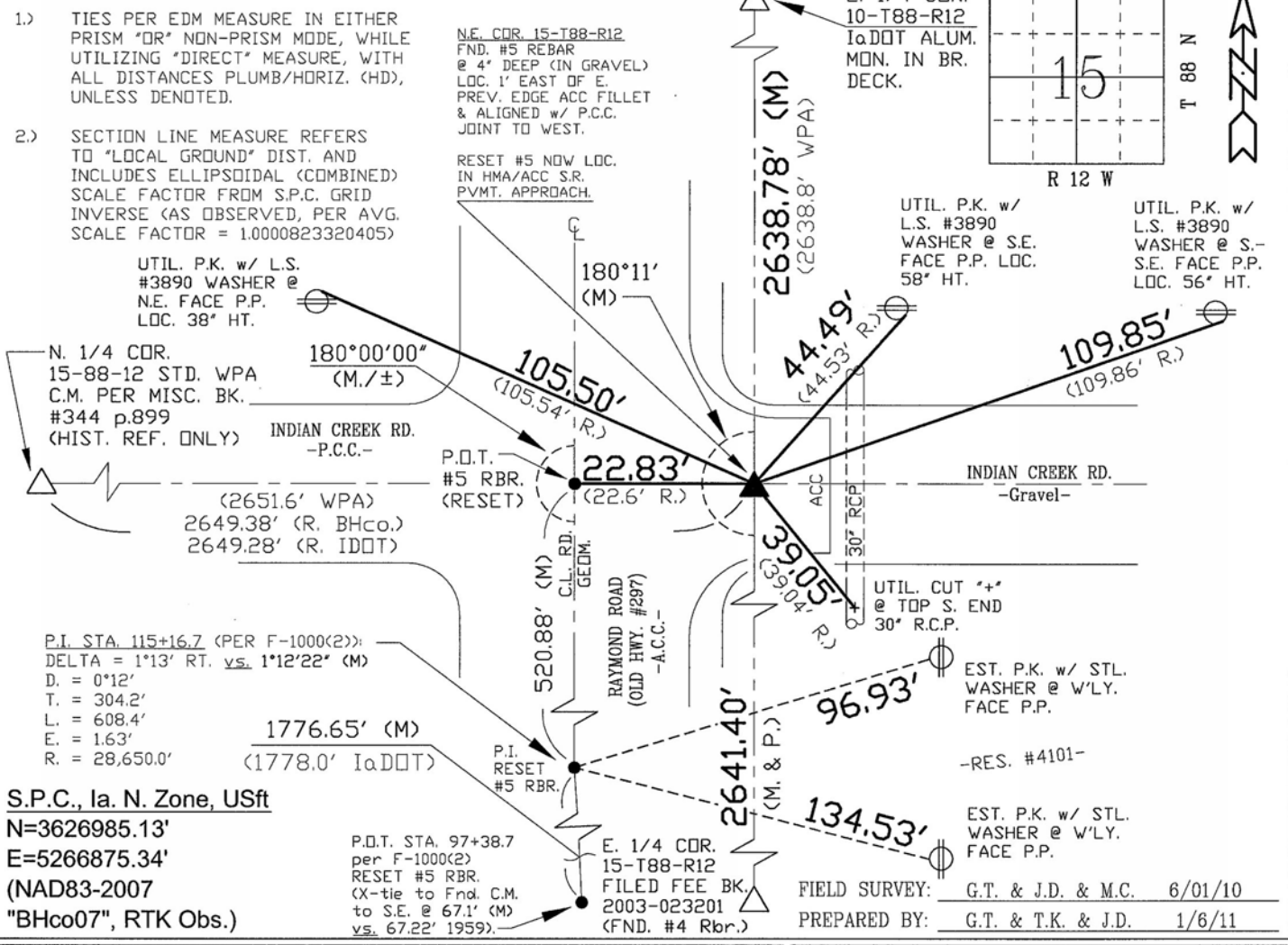
Monument Description and Remarks: N.E. COR. 22-T88-R12
FND. 5/8" REBAR AS DENOTED, PRIOR TO 2009 H.M.A. RESURF. PROJECT. CORNER PREV.
RECOVERED TO ASSIST W/ RECOVERY OF CORNERS IN SECTION'S 9 & 16 OF SAID
TOWNSHIP, PER CUR. RECORD. NORTH LINE OF N.E. 1/4 OF SAID SECT. NOT OBSERVED,
AND FOR HIST. REF. ONLY. AFTER H.M.A. RESURF. PROJ., COR. NOW IN HMA PVMT. OF S.R.
APPROACH, BEING RESET #5 RBR. & ALIGNED E.-W. C.L. RD. @ ±22.8' E. OF C.L. RAY. RD.
(N.-S.). CORNER ALSO PREV. REF. PER PLS #6505 FOR N.1/16E COR. FEE BK. 2003-36405.
ADDITIONAL REF. TO C.L. RD. GEOM. NOTED WITH THIS CERT., AS FND. AND REPLACED PER
IaDOT AS-BUILT PLANS DTD. 1959 FOR PROJ. #F-1000(2). C.L. TANG. GEOM. DETAILED AS
PART OF LAND CORNER REF., WITH ANY UPDATED X-TIES TO P.I.'s / P.O.T.'s AS DENOTED.

NOTE: ALL DISTANCES PLUMB/HORIZ.
(H.D.), "UNLESS DENOTED".

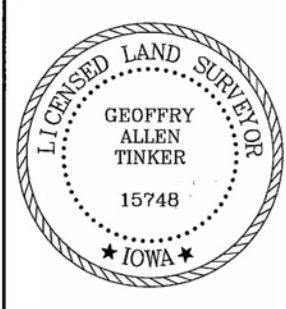
PLAN VIEW
"NOT TO SCALE"

BHco Hist. Ties: BK. #1001 p.15 88-12
FIELD BOOK: BHco. #489 p.p. 1-2

(Show a minimum of three reference ties to durable physical objects, relevant monuments and physical conditions that will enable recovery of the corner.)



CERTIFICATION



I hereby certify that this land surveying document was prepared and the related survey work was performed by me or under my direct personal supervision and that I am a duly licensed Land Surveyor under the laws of the State of Iowa.
Geoffrey Allen Tinker 01/06/2011
Geoffrey Allen Tinker (date)
License Number 15748
My license renewal date is December 31, 2012
Pages or sheets covered by this seal:
This Land Corner Certificate Only.

LIST CORNERS TO BE INDEXED

Corner	Section	Township	Range
N.E. Cor.	15	88 N	12 W
N.W. Cor.	14	88 N	12 W
S.E. Cor.	10	88 N	12 W
S.W. Cor.	11	88 N	12 W

INDEX OF ABBREVIATIONS

(M) = "Measured" Dimension
(P) = "Platted" Dimension
(R) = "Record" Dimension
(C) = "Calculated" Dimension
(GS) = Iowa Geodetic Survey
(WPA) = Works Progress Admin. Survey
"G" = per George Miller Survey (BHco Surveyor 1858-1860)
"B" = per John Ball Survey (BHco Surveyor 1866-1891)
"N" = per Nathan Barber Survey (BHco Surveyor 1908-1931)
"NP" = Reflectorless EDM Meas.
"MLM" = Indirect Measure
"CM" = Concrete Monument
"SM" = Survey Marker Spike/Tag
"PK" = PK/MAG Nail Brand Style