



Doc ID: 008305410002 Type: GEN  
Recorded: 12/27/2017 at 03:51:53 PM  
Fee Amt: \$12.00 Page 1 of 2  
Black Hawk County Iowa  
SANDIE L. SMITH RECORDER

File 2018-00010988

Kyle J. Helland, 1107 Technology Parkway, Cedar Falls, Iowa 50613-6951, (319)-266-0161

# UNITED STATES PUBLIC LAND SURVEY CORNER CERTIFICATE OF

LAND SURVEY MONUMENTS SITUATED IN SECTION NO. 15, TOWNSHIP NO. 88 NORTH, RANGE  
NO. 12 WEST OF THE FIFTH PRINCIPAL MERIDIAN, BLACK HAWK COUNTY, IOWA.

PREVIOUSLY RECORDED IN FEE BK #2003 36405.

(SHOW REASON FOR PREPARING THIS CERTIFICATE, THE EVIDENCE AND DETAILED PROCEDURES USED IN ESTABLISHING THE  
CORNER POSITIONS AND MONUMENTATION FOUND OR PLACED.)

## MONUMENT DESCRIPTION AND REMARKS:

A DIFFERENT POSITION WAS UTILIZED FROM USPLSCC ON FILE. SURVEY COMPLETED IN THE NE 1/4 OF SEC.  
15-T88N-R12W.

→ **NE CORNER OF SE 1/4 NE 1/4:** USPLSCC IN FEE BK #2003 36405 DATED 06/02/2003 BY PAUL H. HELLAND CALLS  
FOR [NO BLACK HAWK COUNTY ENGINEER REFERENCE TIES. ESTABLISHED ON A STRAIGHT LINE BETWEEN  
THE NW CORNER & W 1/4 CORNER OF SAID SEC. 14 AND AT PRORATED DISTANCE PER PLAT OF SURVEY BY  
GARY BROWN DATED 4/30/1980 RECORDED IN 233 MISC. 340. SET NO. 4 REBAR w/ORANGE PLASTIC CAP  
#6505, 0.5' DEEP]. THE POSITION OF THE W 1/4 CORNER OF SEC. 14 PER SAID FEE BK #2003 29532 DOES NOT  
CORRESPOND TO THE FINAL PLAT OF "WOODED HILLS ADDITION" NOR SAID PLAT OF SURVEY IN 233 MISC.  
340 DATED 04/22/1980 BY GARY G. BROWN. THEREFORE, THE CORNER THAT WAS SET WAS ESTABLISHED  
BASED UPON AN ERRONEOUS W 1/4 CORNER OF SEC. 14 (E 1/4 CORNER SEC. 15). REESTABLISHED THE NE  
CORNER OF THE SE 1/4 NE 1/4 BASED UPON BEST FIT ANALYSIS OF MONUMENTS FOUND PER SAID PLAT OF  
SURVEY IN 233 MISC. 340 AND THE ROAD GEOMETRICS. SET NO. 4 REBAR w/OPC #23212.

SEE SHEET 2 FOR PLAN VIEW.

(BEARINGS ARE ASSUMED)



HELLAND ENGINEERING & SURVEYING, LTD.  
1107 Technology Parkway  
Cedar Falls, Iowa 50613-6951  
(319)-266-0161

SHEET 1 OF 2

SHINER = 8d. NAIL & 1 5/16"Ø METAL SHINER DRAWN BY: JPH  
BRASS TAG = 8d. NAIL & 13/16"Ø BRASS TAG  
OPC = PLASTIC CAP (O=ORANGE, R=RED, Y=YELLOW)  
(00') RECORDED AS FILE NAME: 17-232-32.DWG



I hereby certify that this land surveying document was prepared  
and the related survey work was performed by me or under my  
direct personal supervision and that I am a duly licensed  
Professional Land Surveyor under the laws of the State of Iowa.

Kyle J. Helland 12/15/17  
License Number 23212  
My license renewal date is December 31, 2017.  
All pages or sheets are covered by this seal except:

## LIST CORNERS TO BE INDEXED

CORNER	SECTION	TOWNSHIP	RANGE
NE COR. SE 1/4 NE 1/4	15	88N	12W
SE COR. NE 1/4 NE 1/4	15	88N	12W
SW COR. NW 1/4 NW 1/4	14	88N	12W
NW COR. SW 1/4 NW 1/4	14	88N	12W

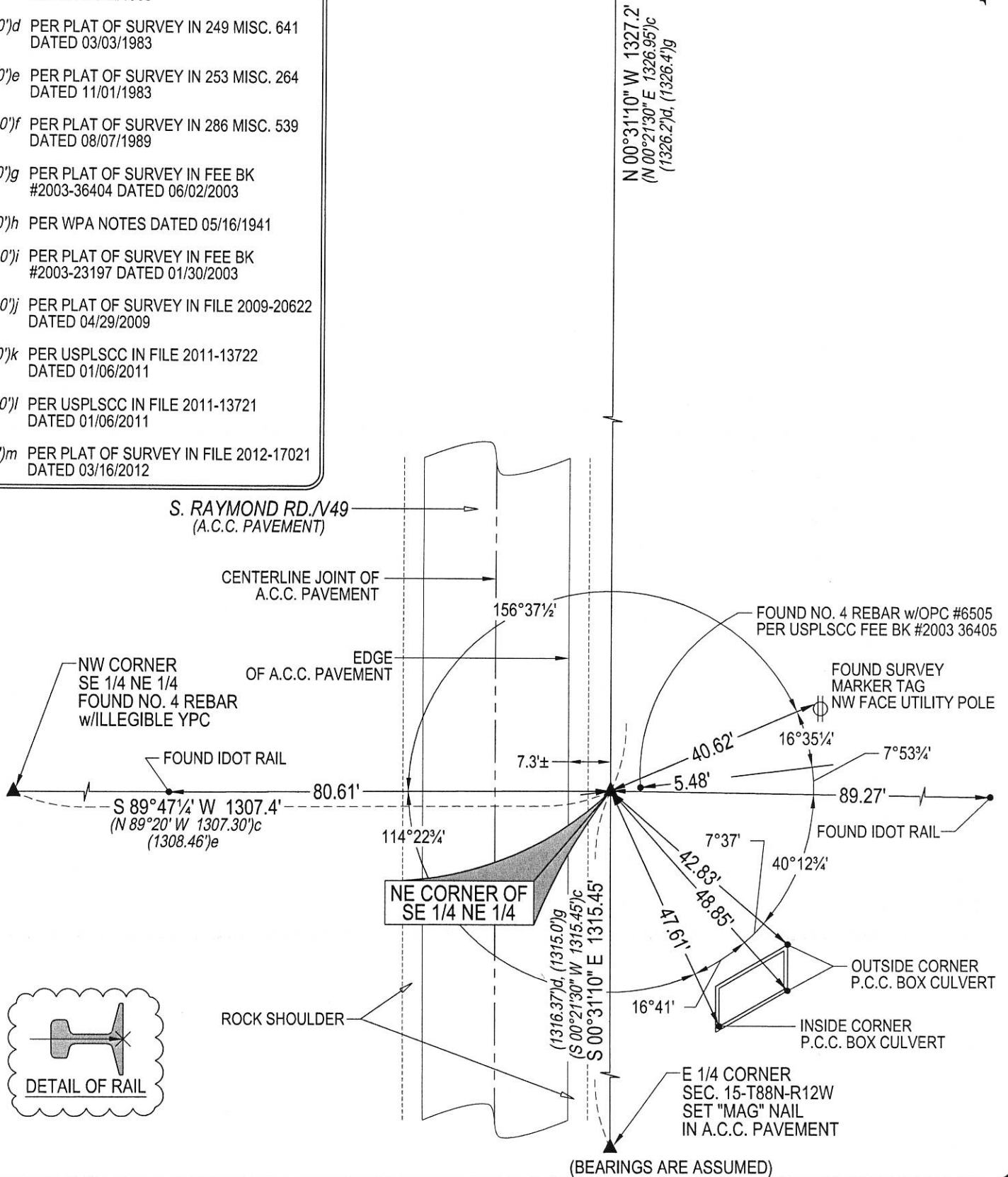
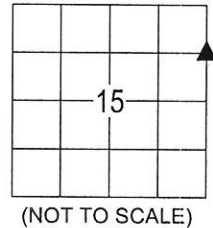
# PLAN VIEW

(SHOW A MINIMUM OF THREE REFERENCE TIES TO DURABLE PHYSICAL OBJECTS, RELEVANT MONUMENTS AND PHYSICAL CONDITIONS THAT WILL ENABLE RECOVERY OF THE CORNER.)

## LEGEND

- (0.0')a PER UNRECORDED PLAT OF SURVEY DATED 06/30/1982 BY PAUL H. HELLAND
- (0.0')b PER "WOODED HILLS ADDITION" FINAL PLAT DATED 03/03/1975
- (0.0')c PER PLAT OF SURVEY IN 233 MISC. 340 DATED 04/22/1980
- (0.0')d PER PLAT OF SURVEY IN 249 MISC. 641 DATED 03/03/1983
- (0.0')e PER PLAT OF SURVEY IN 253 MISC. 264 DATED 11/01/1983
- (0.0')f PER PLAT OF SURVEY IN 286 MISC. 539 DATED 08/07/1989
- (0.0')g PER PLAT OF SURVEY IN FEE BK #2003-36404 DATED 06/02/2003
- (0.0')h PER WPA NOTES DATED 05/16/1941
- (0.0')i PER PLAT OF SURVEY IN FEE BK #2003-23197 DATED 01/30/2003
- (0.0')j PER PLAT OF SURVEY IN FILE 2009-20622 DATED 04/29/2009
- (0.0')k PER USPLSCC IN FILE 2011-13722 DATED 01/06/2011
- (0.0')l PER USPLSCC IN FILE 2011-13721 DATED 01/06/2011
- (0.0')m PER PLAT OF SURVEY IN FILE 2012-17021 DATED 03/16/2012

NE CORNER  
SEC. 15-T88N-R12W  
FOUND 5/8" REBAR  
IN A.C.C. PAVEMENT  
PER FILE 2011-00013721



(BEARINGS ARE ASSUMED)



HELLAND ENGINEERING & SURVEYING, LTD.

1107 Technology Parkway  
Cedar Falls, Iowa 50613-6951  
(319)-266-0161

SHEET 2 OF 2

SHINER = 8d. NAIL & 1 5/16"Ø METAL SHINER  
BRASS TAG = 8d. NAIL & 13/16"Ø BRASS TAG  
OPC = PLASTIC CAP (O=ORANGE, R=RED, Y=YELLOW)  
(00') RECORDED AS  
DRAWN BY: JPH  
FILE NAME: 17-232-32.DWG

## LIST CORNERS TO BE INDEXED

CORNER	SECTION	TOWNSHIP	RANGE
NE COR. SE 1/4 NE 1/4	15	88N	12W
SE COR. NE 1/4 NE 1/4	15	88N	12W
SW COR. NW 1/4 NW 1/4	14	88N	12W
NW COR. SW 1/4 NW 1/4	14	88N	12W