

WAYNE CLAASSEN ENGINEERING AND SURVEYING, INC.
P.O. BOX 898 WATERLOO, IOWA 50704-0898

PHONE: (VOICE) 319-235-6294
(FAX) 319-235-0028

UNITED STATES PUBLIC LAND SURVEY CORNER CERTIFICATE

Land Survey Monuments situated in Section 15, Township 88 North, Range 12 West, of the Fifth Principal Meridian, Black Hawk County, Iowa.

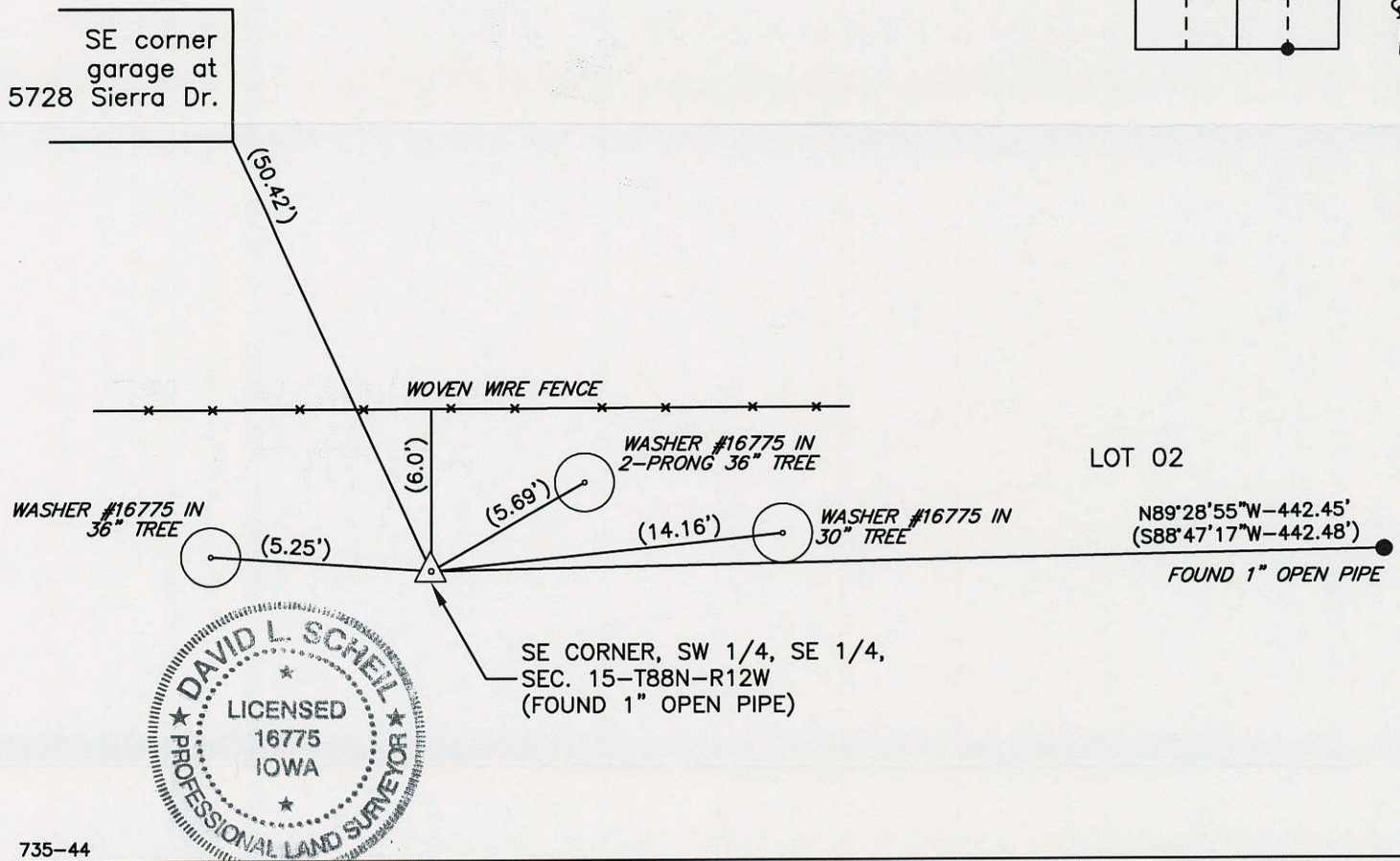
Previously recorded in _____ in County Recorder's Office.
(book, page, document number, etc.)

Monument Description and Remarks

Found 1" open pipe at location shown on Wooded Hills Addition Subdivision Plat.

000.00 DENOTES RECORD DIMENSION FROM
(000.00) DENOTES FIELD DIMENSION

PLAN - VIEW



735-44

I hereby certify that this land surveying document was prepared and the related survey work was performed by me or under my direct personal supervision and that I am a duly Licensed Land Surveyor under the laws of the State of Iowa.

Signature: _____
David L. Schell, L.S.

Date: JAN 04, 2019 Lic. No. 16775

Pages or Sheets Covered by this Seal: THIS SHEET ONLY.

My license renewal date is December 31, 2020

SEAL

List Corners to be Indexed

Corners	Section	Twp	Range
SE CORNER, SW 1/4, SE 1/4,	15	88 N	12 W
NE CORNER, NW 1/4, NE 1/4,	22	88 N	12 W