

Reserved for County Recorder's use.



Doc ID: 008305420002 Type: GEN
Recorded: 12/27/2017 at 03:52:02 PM
Fee Amt: \$12.00 Page 1 of 2
Black Hawk County Iowa
SANDIE L. SMITH RECORDER

File 2018-00010989

Kyle J. Helland, 1107 Technology Parkway, Cedar Falls, Iowa 50613-6951, (319)-266-0161

UNITED STATES PUBLIC LAND SURVEY CORNER CERTIFICATE
OF

LAND SURVEY MONUMENTS SITUATED IN SECTION NO. 15, TOWNSHIP NO. 88 NORTH, RANGE
NO. 12 WEST OF THE FIFTH PRINCIPAL MERIDIAN, BLACK HAWK COUNTY, IOWA.

PREVIOUSLY RECORDED IN FEE BK #2003 29532.

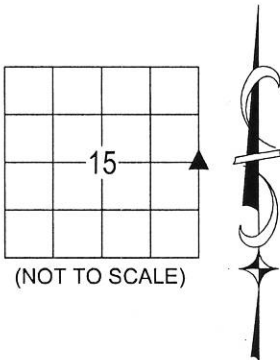
(SHOW REASON FOR PREPARING THIS CERTIFICATE, THE EVIDENCE AND DETAILED PROCEDURES USED IN ESTABLISHING THE
CORNER POSITIONS AND MONUMENTATION FOUND OR PLACED.)

MONUMENT DESCRIPTION AND REMARKS:

A DIFFERENT POSITION WAS UTILIZED FROM USPLSCC ON FILE. SURVEY COMPLETED IN THE NE 1/4 OF SEC.
15-T88N-R12W.

→ **E 1/4 CORNER:** WPA NOTES DATED 05/16/1941 CALL FOR [FOUND O.H. 2x2x18", SET BY COUNTY ENGINEER'S
OFFICE WHEN THEY ESTABLISHED SAME. THIS IS ACCEPTABLE AS CORNER TO ME (YOUNGERMAN) S.C.M. 6"
DEEP. NO 1/4 FC'S EAST OR WEST. NO OLD SUB-DIVISION SURVEY RECORDS.] BLACK HAWK COUNTY
ENGINEER REFERENCE TIES ARE THE SAME AS THE WPA NOTES. R.O.W. DRAWING BY THE IOWA STATE
HIGHWAY COMMISSION DATED 08/12/1958 DOES NOT MAKE REFERENCE TO THE E 1/4 CORNER, BUT DEFINES
THE CENTERLINE OF FORMER IOWA HIGHWAY #297 UTILIZING THE NE CORNER AND THE SE CORNER OF
SECTION 15. "WOODED HILLS ADDITION" FINAL PLAT DATED 03/03/1975 BY GARY G. BROWN CALLS FOR [SET
NAIL 8.76' RT. OF STA. 93+94.43]. PLAT OF SURVEY IN 233 MISC. 340 DATED 04/22/1980 BY GARY G. BROWN
CALLS FOR [CONCRETE MONUMENT FOUND]. PLAT OF SURVEY IN 249 MISC. 641 DATED 03/03/1983 BY PAUL H.
HELLAND CALLS FOR [FO. NAIL 8.76' EAST OF E1/4]. PLAT OF SURVEY IN 253 MISC. 264 DATED 11/01/1983 BY
PAUL H. HELLAND CALLS FOR [FOUND NAIL]. PLAT OF SURVEY IN FEE BK #2003-36404 DATED 06/02/2003 BY
PAUL H. HELLAND CALLS FOR [FOUND NO. 4 REBAR PER FEE BK #2003 29532]. PLAT OF SURVEY IN FEE BK
#2003-23197 DATED 01/30/2003 BY KIRK D. ESCHLIMAN CALLS FOR INDICATES A DISTANCE FROM THE SE
CORNER OF SEC. 15 TO THE E 1/4 CORNER, BUT DOES NOT STATE WHAT WAS FOUND OR SET. PLAT OF
SURVEY IN FILE 2009-20622 DATED 04/29/2009 BY DAVID L. SCHEIL CALLS FOR [FND. 5/8" REBAR 6" DEEP].
USPLSCC IN FILE 2011-13722 DATED 01/06/2011 AND USPLSCC IN FILE 2011-13721 DATED 01/06/2011 BY GEOFF
A. TINKER CALLS FOR [FND. #4 RBR.]. PLAT OF SURVEY IN FILE 2012-17021 DATED 03/16/2012 BY KIRK D.
ESCHLIMAN CALLS UTILIZES THE E 1/4 CORNER BUT DOES NOT STATE WHAT WAS FOUND OR SET. USPLSCC
IN FEE BK #2003 29532 DATED 01/30/2003 BY KIRK D. ESCHLIMAN CALLS FOR [FOUND 5/8" REBAR]. THE
POSITION PER SAID FEE BK #2003 29532 DOES NOT CORRESPOND TO THE FINAL PLAT OF "WOODED HILLS
ADDITION" NOR SAID PLAT OF SURVEY IN 233 MISC. 340 DATED 04/22/1980 BY GARY G. BROWN.
REESTABLISHED THE E 1/4 CORNER BASED UPON BEST FIT ANALYSIS OF MONUMENTS FOUND PER SAID
PLAT OF SURVEY IN 233 MISC. 340 AND THE ROAD GEOMETRICS. SET "MAG" NAIL IN A.C.C. PAVEMENT. SAID
"MAG" NAIL IS 8.81' (RECORDED AS 8.76') EAST OF THE CENTERLINE AS DETERMINED BY MONUMENTS FOUND
AT THE P.I.S. TO THE NORTH AND SOUTH OF THE E 1/4 CORNER.

SEE SHEET 2 FOR PLAN VIEW.



(BEARINGS ARE ASSUMED)



HELLAND ENGINEERING & SURVEYING, LTD.
1107 Technology Parkway
Cedar Falls, Iowa 50613-6951
(319)-266-0161

SHEET 1 OF 2

SHINER = 8d. NAIL & 1 5/16"Ø METAL SHINER DRAWN BY: JPH
BRASS TAG = 8d. NAIL & 13/16"Ø BRASS TAG
OPC = PLASTIC CAP (O=ORANGE, R=RED, Y=YELLOW)
(00') RECORDED AS FILE NAME: 17-232-22.DWG



I hereby certify that this land surveying document was prepared
and the related survey work was performed by me or under my
direct personal supervision and that I am a duly licensed
Professional Land Surveyor under the laws of the State of Iowa.

Kyle J. Helland
License Number 23212
My license renewal date is December 31, 2017.
All pages or sheets are covered by this seal except:

LIST CORNERS TO BE INDEXED			
CORNER	SECTION	TOWNSHIP	RANGE
E 1/4 CORNER	15	88N	12W
W 1/4 CORNER	14	88N	12W

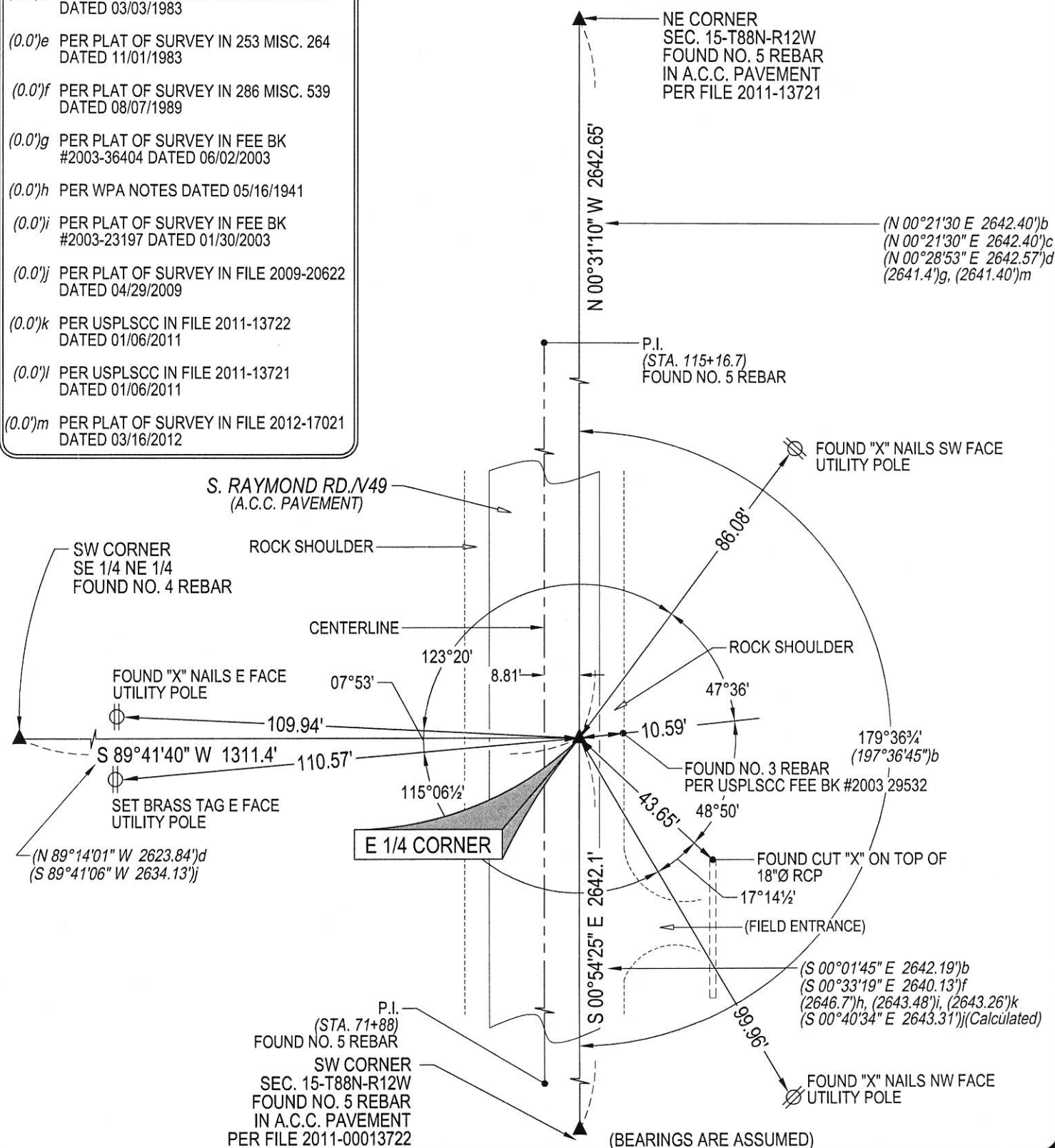
(SHOW A MINIMUM OF THREE REFERENCE TIES TO DURABLE PHYSICAL OBJECTS, RELEVANT MONUMENTS AND PHYSICAL CONDITIONS THAT WILL ENABLE RECOVERY OF THE CORNER.)

	15		

(NOT TO SCALE)



- (0.0')a PER UNRECORDED PLAT OF SURVEY
DATED 06/30/1982 BY PAUL H. HELLAND
- (0.0')b PER "WOODED HILLS ADDITION" FINAL
PLAT DATED 03/03/1975
- (0.0')c PER PLAT OF SURVEY IN 233 MISC. 340
DATED 04/22/1980
- (0.0')d PER PLAT OF SURVEY IN 249 MISC. 641
DATED 03/03/1983
- (0.0')e PER PLAT OF SURVEY IN 253 MISC. 264
DATED 11/01/1983
- (0.0')f PER PLAT OF SURVEY IN 286 MISC. 539
DATED 08/07/1989
- (0.0')g PER PLAT OF SURVEY IN FEE BK
#2003-36404 DATED 06/02/2003
- (0.0')h PER WPA NOTES DATED 05/16/1941
- (0.0')i PER PLAT OF SURVEY IN FEE BK
#2003-23197 DATED 01/30/2003
- (0.0')j PER PLAT OF SURVEY IN FILE 2009-20622
DATED 04/29/2009
- (0.0')k PER USPLSCC IN FILE 2011-13722
DATED 01/06/2011
- (0.0')l PER USPLSCC IN FILE 2011-13721
DATED 01/06/2011
- (0.0')m PER PLAT OF SURVEY IN FILE 2012-17021
DATED 03/16/2012



(BEARINGS ARE ASSUMED)



HELLAND ENGINEERING & SURVEYING, LTD.
1107 Technology Parkway
Cedar Falls, Iowa 50613-6951
(319)-266-0161

SHEET 2 OF 2

SHINER = 8d. NAIL & 1 5/16"Ø METAL SHINER DRAWN BY: JPH
BRASS TAG = 8d. NAIL & 13/16"Ø BRASS TAG
OPC = PLASTIC CAP (O=ORANGE, R=RED, Y=YELLOW)
(00') RECORDED AS FILE NAME: 17-232-22.DWG

OPC = PLASTIC CAP
(00') RECORDED AS

FILE NAME: 17-232-22.DWG

CORNER	SECTION	TOWNSHIP	RANGE
E 1/4 CORNER	15	88N	12W
W 1/4 CORNER	14	88N	12W