

*Paul H. Helland*

PAUL HELLAND

Paul H. Helland, 1107 Technology Parkway, Cedar Falls, Iowa 50613-6951, (319)-266-0161

UNITED STATES PUBLIC LAND SURVEY CORNER CERTIFICATE  
OFLAND SURVEY MONUMENTS SITUATED IN SECTION NO. 14, TOWNSHIP NO. 88 NORTH, RANGE  
NO. 12 WEST OF THE FIFTH PRINCIPAL MERIDIAN, BLACK HAWK COUNTY, IOWA.

PREVIOUSLY RECORDED IN BOOK \_\_\_\_\_, PAGE \_\_\_\_\_.

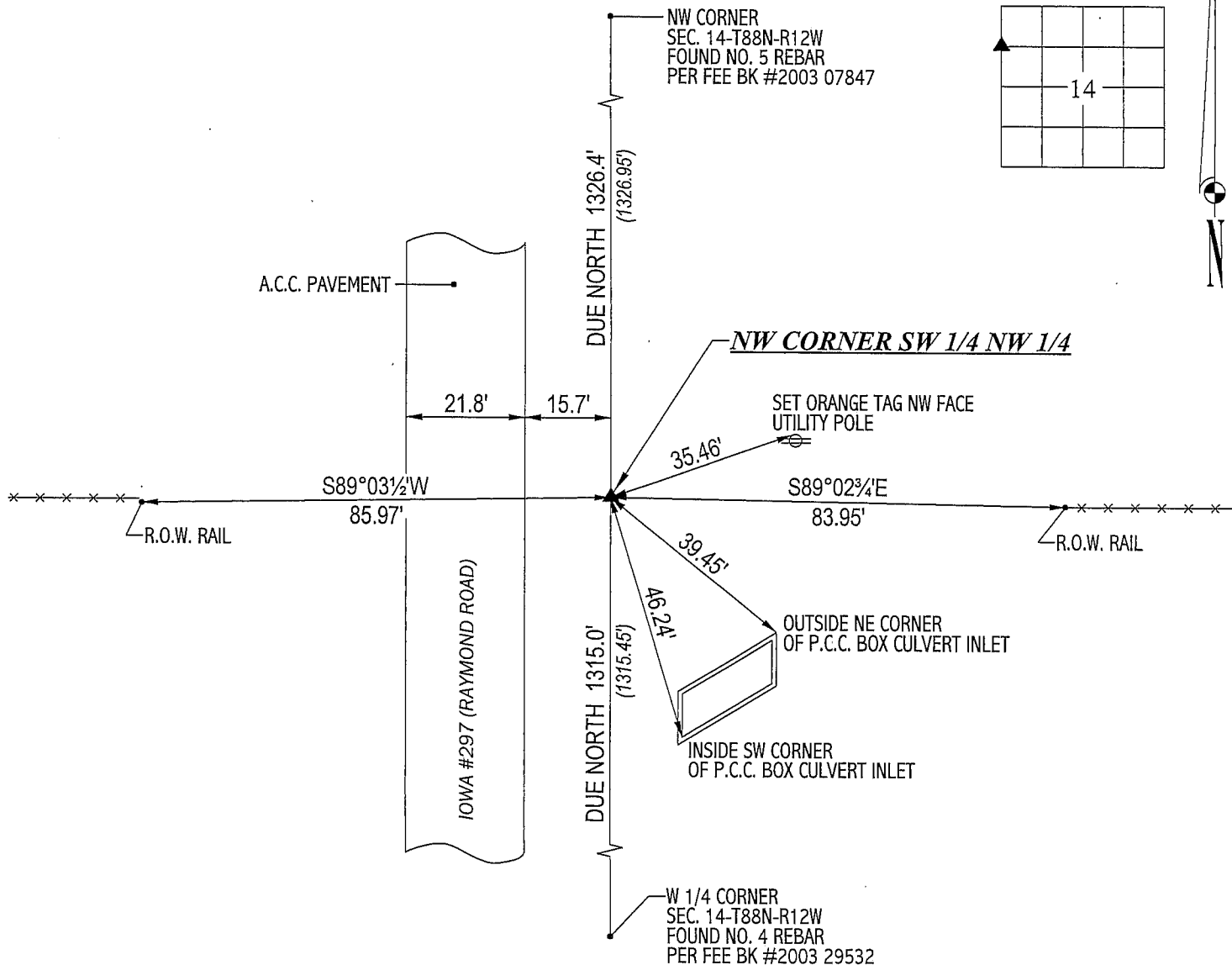
(SHOW REASON FOR PREPARING THIS CERTIFICATE, THE EVIDENCE AND DETAILED PROCEDURES USED IN ESTABLISHING THE  
CORNER POSITIONS AND MONUMENTATION FOUND OR PLACED.)

## MONUMENT DESCRIPTION AND REMARKS:

NO CORNER CERTIFICATE ON FILE. SURVEY DONE IN SW 1/4 OF NW 1/4 OF SEC. 14-T88N-R12W.

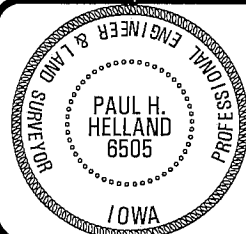
→ NW CORNER OF SW 1/4 NW 1/4: NO BLACK HAWK COUNTY ENGINEER REFERENCE TIES. ESTABLISHED ON A STRAIGHT LINE BETWEEN  
THE NW CORNER & W 1/4 CORNER OF SAID SEC. 14 AND AT PRORATED DISTANCE PER PLAT OF SURVEY BY GARY BROWN DATED 4/30/1980  
RECORDED IN 233 MISC. 340. SET NO. 4 REBAR w/ORANGE PLASTIC CAP #6505, 0.5' DEEP.

## PLAN VIEW

(SHOW A MINIMUM OF THREE REFERENCE TIES TO DURABLE PHYSICAL OBJECTS, RELEVANT MONUMENTS AND PHYSICAL  
CONDITIONS THAT WILL ENABLE RECOVERY OF THE CORNER.)HELLAND ENGINEERING & SURVEYING, LTD.  
1107 Technology Parkway  
Cedar Falls, Iowa 50613-6951  
(319)-266-0161

(00.00') - RECORDED AS

FILE NAME: 03-200CC.DRG

I hereby certify that this land surveying document was prepared  
and the related survey work was performed by me or under my  
direct personal supervision and that I am a duly licensed Land  
Surveyor under the laws of the State of Iowa.*Paul H. Helland 6/2/03*

Paul H. Helland

License Number 6505

My license renewal date is December 31, 2003.

All pages or sheets are covered by this seal except:

## LIST CORNERS TO BE INDEXED

CORNER	SECTION	TOWNSHIP	RANGE
NW CORNER	14	88N	12W
SW 1/4 NW 1/4			

*Rae*