

UNITED STATES PUBLIC LAND SURVEY CORNER CERTIFICATE  
OF

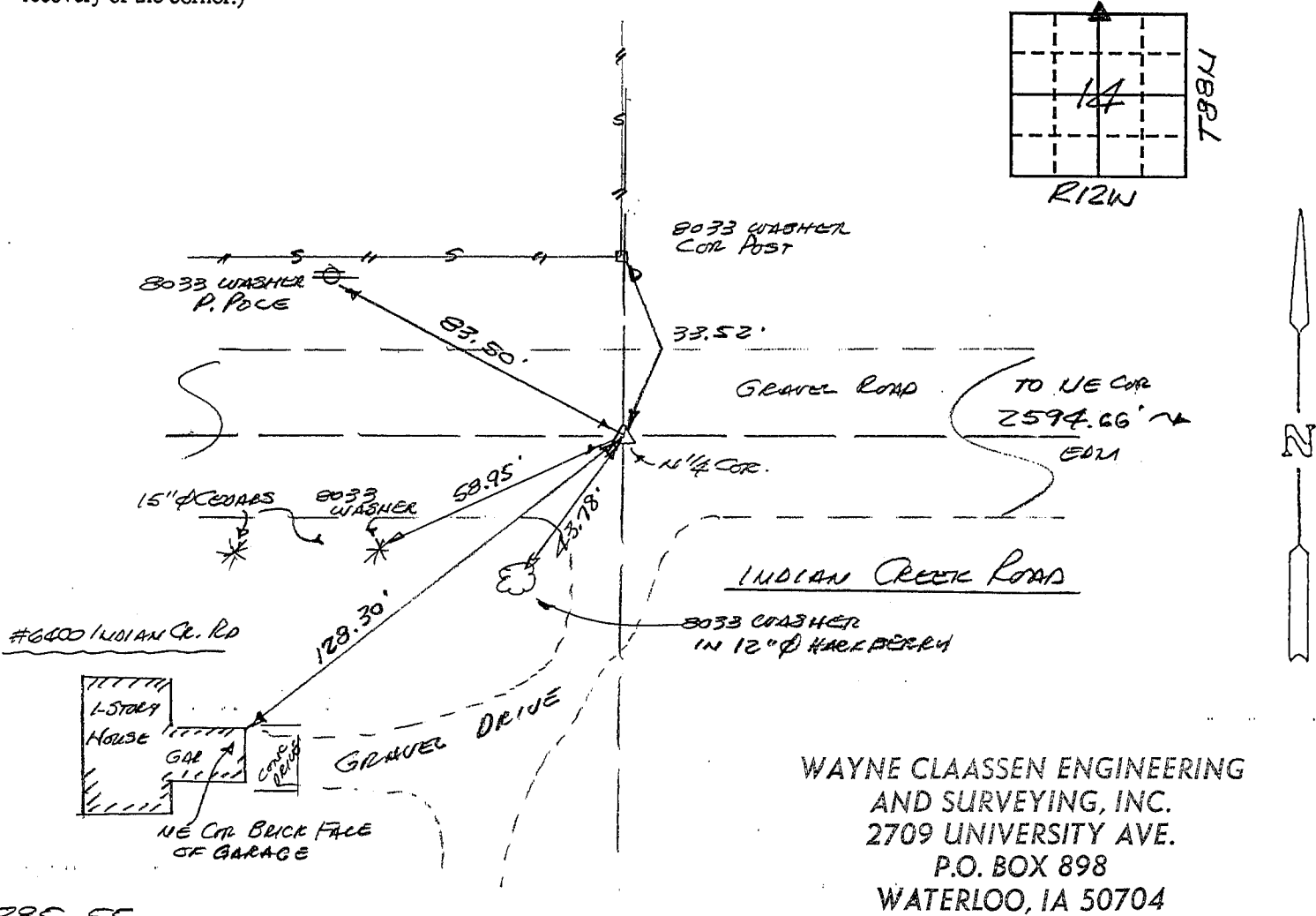
Land Survey Monuments situated in Section 14, Township 88N, Range 12W, of the Fifth Principal Meridian, BLACK HAWK County, Iowa.  
Previously recorded in N/A in County Recorder's Office.  
(book, page, document number, etc.)

(Show reason for preparing this certificate, the evidence and detailed procedures used in establishing the corner positions and monumentation found or placed.)

Monument Description and Remarks: FOUND 3RD CONC. MON. 12" DEEP IN GRAVEL ROAD  
PER D.O.T. I-380 TIES. SET 1/2" REBAR @ NO. EDGE MON. @ 1" BELOW TOP.  
ALSO SET 1/2" REBAR OVER MONUMENT @ 2" BELOW SURFACE GRAVEL ROAD.

PLAN - VIEW

(Show a minimum of three reference ties to durable physical objects, relevant monuments and physical conditions that will enable recovery of the corner.)



385-55

I hereby certify that the survey work was completed and this certificate was prepared by me or under my direct personal supervision and that I am a duly registered land surveyor under the laws of the state of Iowa.

Signature: F. William King  
Name typed or printed: F. WILLIAM KING

Date: 3-29-1995 Reg. No. 8033



SEAL

Corners	List Corners to be Indexed		
	Section	Twp	Range
11/4	14	88N	12W

MISC. BK. 315 p. 177