

ENTERED
BKS 88
I & II

SLSI 9-90

UNITED STATES PUBLIC LAND SURVEY CORNER CERTIFICATE

OF

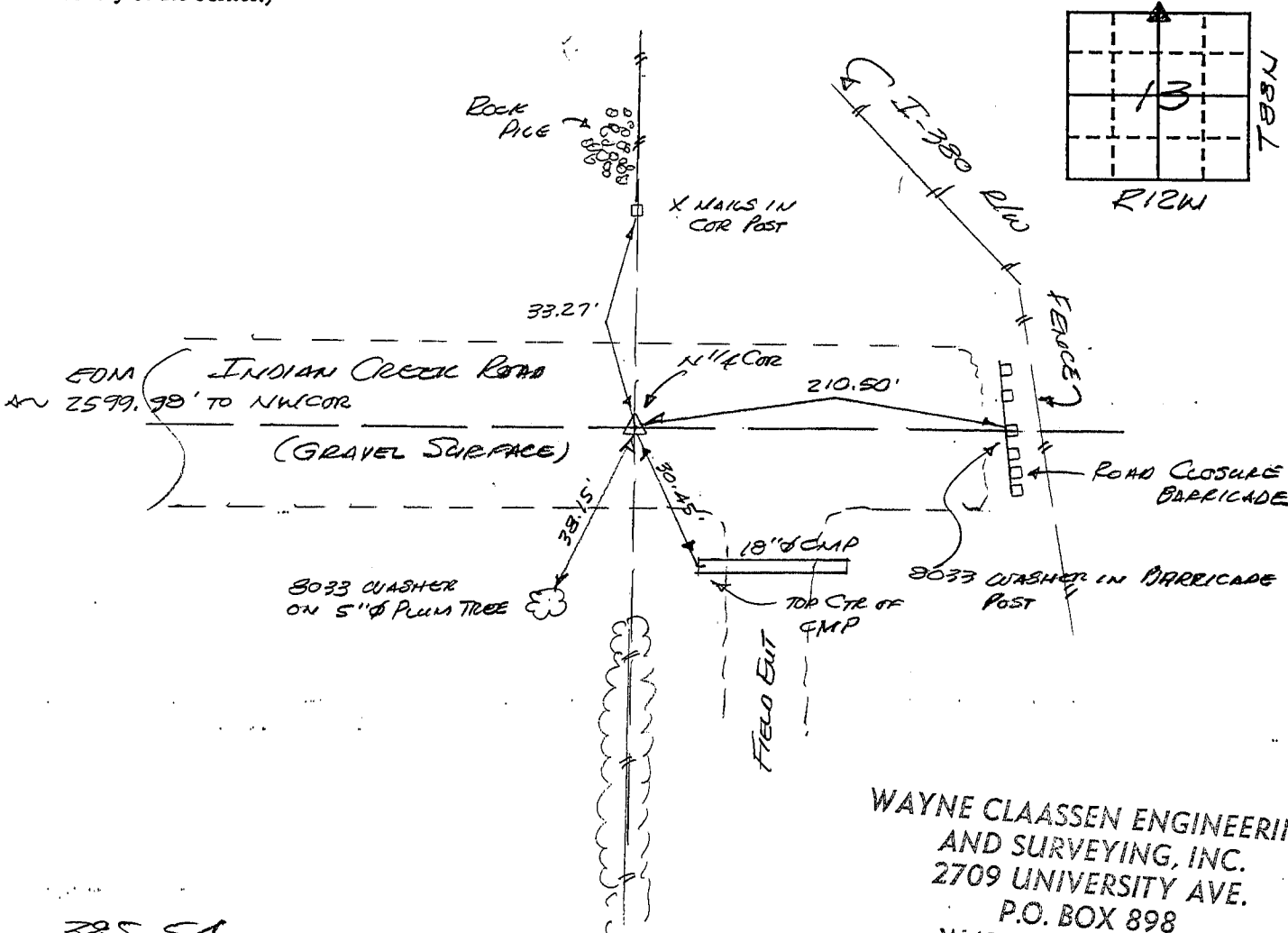
Land Survey Monuments situated in Section 13, Township 88N, Range 12W, of the Fifth Principal Meridian, BLACK HAWK County, Iowa. Previously recorded in N/A in County Recorder's Office.

(Show reason for preparing this certificate, the evidence and detailed procedures used in establishing the corner positions and monumentation found or placed.)

Monument Description and Remarks: FOUND STD CONC. MONUMENT 12" DEEP PER D.O.T.
CORNERSTONE SURVEY I-380. SET 5/8" ϕ REBAR ON NORTH SIDE MONUMENT @
1" BELOW TOP. SET 1/2" ϕ REBAR OVER MONUMENT @ 2" DEEP IN GRAVEL
ROADWAY

PLAN - VIEW

(Show a minimum of three reference ties to durable physical objects, relevant monuments and physical conditions that will enable recovery of the corner.)



WAYNE CLAASSEN ENGINEERING
AND SURVEYING, INC.
2709 UNIVERSITY AVE.
P.O. BOX 898
WATERLOO, IA 50704

I hereby certify that the survey work was completed and this certificate was prepared by me or under my direct personal supervision and that I am a duly registered land surveyor under the laws of the state of Iowa.

Signature: F. William King
Name typed or printed: F. WILLIAM KING

Date: 3-29-1995 Reg. No. 8033

Corners	List Corners to be Indexed Section	Twp	Range
N 1/4	13	88N	12W

SEAL



MISC. BK. 315 p. 175