

SC  
MISC

MARGIN  
PROOF  
COMPARE

BLACK HAWK COUNTY IOWA:SS 013998  
Filed for record NOV 27, 2001 at  
4:00 P. M. and recorded in Book 344  
of MISC Page 902.

*Paul H. Helland* Recorder  
FEE 15.00  
PAUL HELLAND

1107 TECHNOLOGY PARKWAY  
CEDAR FALLS IA 50613

Paul H. Helland, 1107 Technology Parkway, Cedar Falls, Iowa 50613-6951, (319)-266-0161

## UNITED STATES PUBLIC LAND SURVEY CORNER CERTIFICATE OF

LAND SURVEY MONUMENTS SITUATED IN SECTION NO. 13, TOWNSHIP NO. 88 NORTH, RANGE  
NO. 12 WEST OF THE FIFTH PRINCIPAL MERIDIAN, BLACK HAWK COUNTY, IOWA.

PREVIOUSLY RECORDED IN BOOK \_\_\_\_\_, PAGE \_\_\_\_\_.

(SHOW REASON FOR PREPARING THIS CERTIFICATE, THE EVIDENCE AND DETAILED PROCEDURES USED IN ESTABLISHING THE  
CORNER POSITIONS AND MONUMENTATION FOUND OR PLACED.)

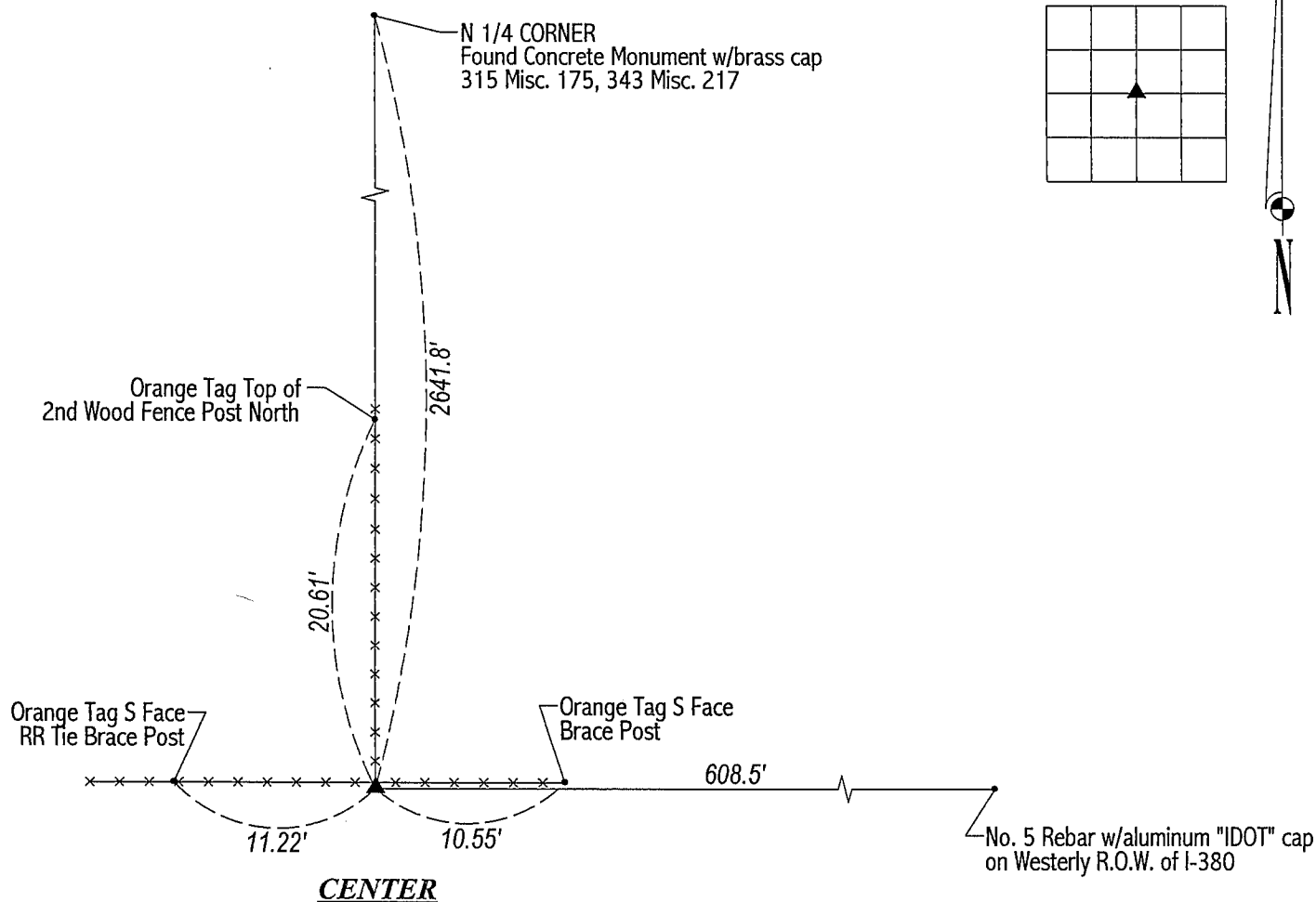
MONUMENT DESCRIPTION AND REMARKS:

SURVEY DONE IN W 1/2 OF NE 1/4 OF SEC. 13-T88N-R12W.

CENTER: No county reference ties exist. No record of previous establishment. Per Land Corner Survey dated 10/5/1977 for  
Project No. I-380-7(19)--01-07 by the Iowa Dept. of Transportation no corner was found nor set. Per said Land Corner Survey  
stones were found at the three Sections 11, 12 & 7 to the North. Excavated and probed for stone around very old RR tie corner  
post, no stone found. Set No. 4 rebar w/orange cap #6505 at South side of said corner post fitting existing fences.

### PLAN VIEW

(SHOW A MINIMUM OF THREE REFERENCE TIES TO DURABLE PHYSICAL OBJECTS, RELEVANT MONUMENTS AND PHYSICAL  
CONDITIONS THAT WILL ENABLE RECOVERY OF THE CORNER.)



HELLAND ENGINEERING & SURVEYING, LTD.  
1107 Technology Parkway  
Cedar Falls, Iowa 50613-6951  
(319)-266-0161

FILE NAME: 01-305CC.DRG



I hereby certify that this land surveying document was prepared  
and the related survey work was performed by me or under my  
direct personal supervision and that I am a duly licensed Land  
Surveyor under the laws of the State of Iowa.

*Paul H. Helland 11/27/01*  
Paul H. Helland  
License Number 6505  
My license renewal date is December 31, 2001.  
All pages or sheets are covered by this seal except:

LIST CORNERS TO BE INDEXED			
CORNER	SECTION	TOWNSHIP	RANGE
CENTER	13	88N	12W