

NOTE:
Also see prev.
rec. doc.'s AS
detected. gpt

INDEX
MARGIN
PROOF
COMPAPE

BLACK HAWK COUNTY IOWA: SS 000113
Filed for record JUL 2, 2001, at
2:30 p.M. and recorded in Book _____
Page _____
Recorder

Fee 1-5.00/
ABACONSULTING
200 S MAIN ST SUITE A
GRIMES IA 50111

ABACI CONSULTING, 200 S. MAIN ST., STE. A, GRIMES, IOWA 50111, PH(515)986-5048

UNITED STATES PUBLIC LAND SURVEY CORNER CERTIFICATE

of
LAND SURVEY MONUMENTS SITUATED IN SECTION 12, TOWNSHIP 88, RANGE 12,
of the Fifth Principal Meridian, BLACK HAWK County, Iowa.

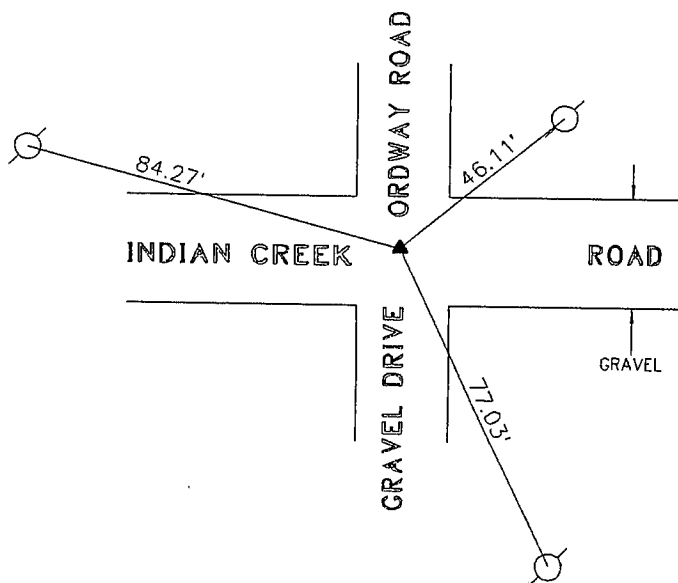
Previously recorded in BK 315 p. 175 ~~NONE~~ BK 315 p. 173 in the County Recorder's Office.

Monument Description & Remarks: S 1/4 COR. (= 13-88-12) SW. COR. 12-88-12 (NE COR. 14-88-12)
SOUTHWEST CORNER: FOUND 3/4" PIPE IN GRAVEL ROAD IN EXPECTED LOCATION.

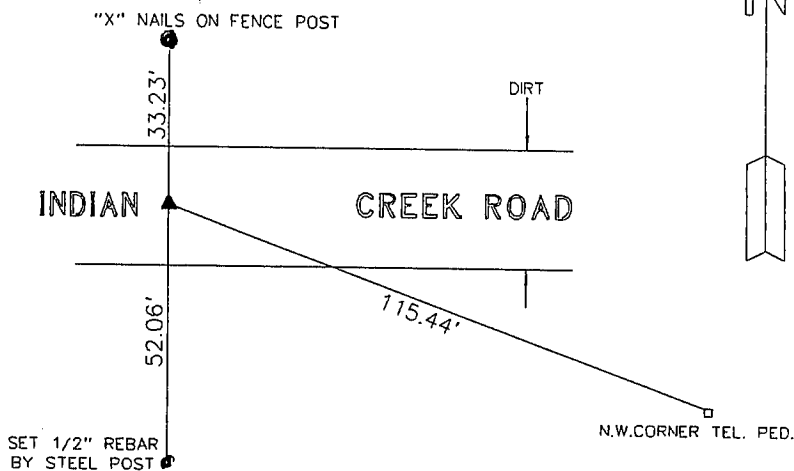
SOUTH 1/4 CORNER: FOUND 1/2" REBAR IN DIRT ROAD

PLAN VIEW

NOTE:
TIES ARE FROM "X" NAILS ON P. POLES



SOUTHWEST CORNER
FOUND 3/4" PIPE IN GRAVEL



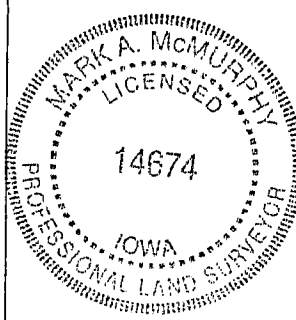
SOUTH 1/4 CORNER
FOUND 1/2" REBAR IN DIRT ROAD

I HEREBY CERTIFY THAT THIS SURVEYING DOCUMENT WAS
PREPARED AND THE RELATED WORK WAS PERFORMED BY ME
OR UNDER MY DIRECT PERSONAL SUPERVISION, AND THAT
I AM A DULY LICENSED PROFESSIONAL LAND SURVEYOR
UNDER THE LAWS OF THE STATE OF IOWA.

Mark A. McMurry 6-28-01
MARK A. MCMURPHY, IOWA LIC. NO 14674 DATE

MY LICENSE RENEWAL DATE IS DECEMBER 31, 2002.

ADDITIONAL PAGES CERTIFIED (NONE UNLESS INDICATED
HERE)



Corners to be Indexed:
Corner Section Twp Range
S.W. 12 - 88 - 12
S. 1/4 12 - 88 - 12