

Reserved for County Recorder's use.



Doc ID: 009362580001 Type: GEN
Recorded: 08/21/2018 at 01:18:16 PM
Fee Amt: \$7.00 Page 1 of 1
Black Hawk County Iowa
SANDIE L. SMITH RECORDER

File **2019-00002967**

Kyle J. Helland, 1107 Technology Parkway, Cedar Falls, Iowa 50613-6951, (319)-266-0161

UNITED STATES PUBLIC LAND SURVEY CORNER CERTIFICATE
OF

LAND SURVEY MONUMENTS SITUATED IN SECTION NO. 12, TOWNSHIP NO. 88 NORTH, RANGE
NO. 12 WEST OF THE FIFTH PRINCIPAL MERIDIAN, BLACK HAWK COUNTY, IOWA.

PREVIOUSLY RECORDED IN N/A

(SHOW REASON FOR PREPARING THIS CERTIFICATE, THE EVIDENCE AND DETAILED PROCEDURES USED IN ESTABLISHING THE
CORNER POSITIONS AND MONUMENTATION FOUND OR PLACED.)

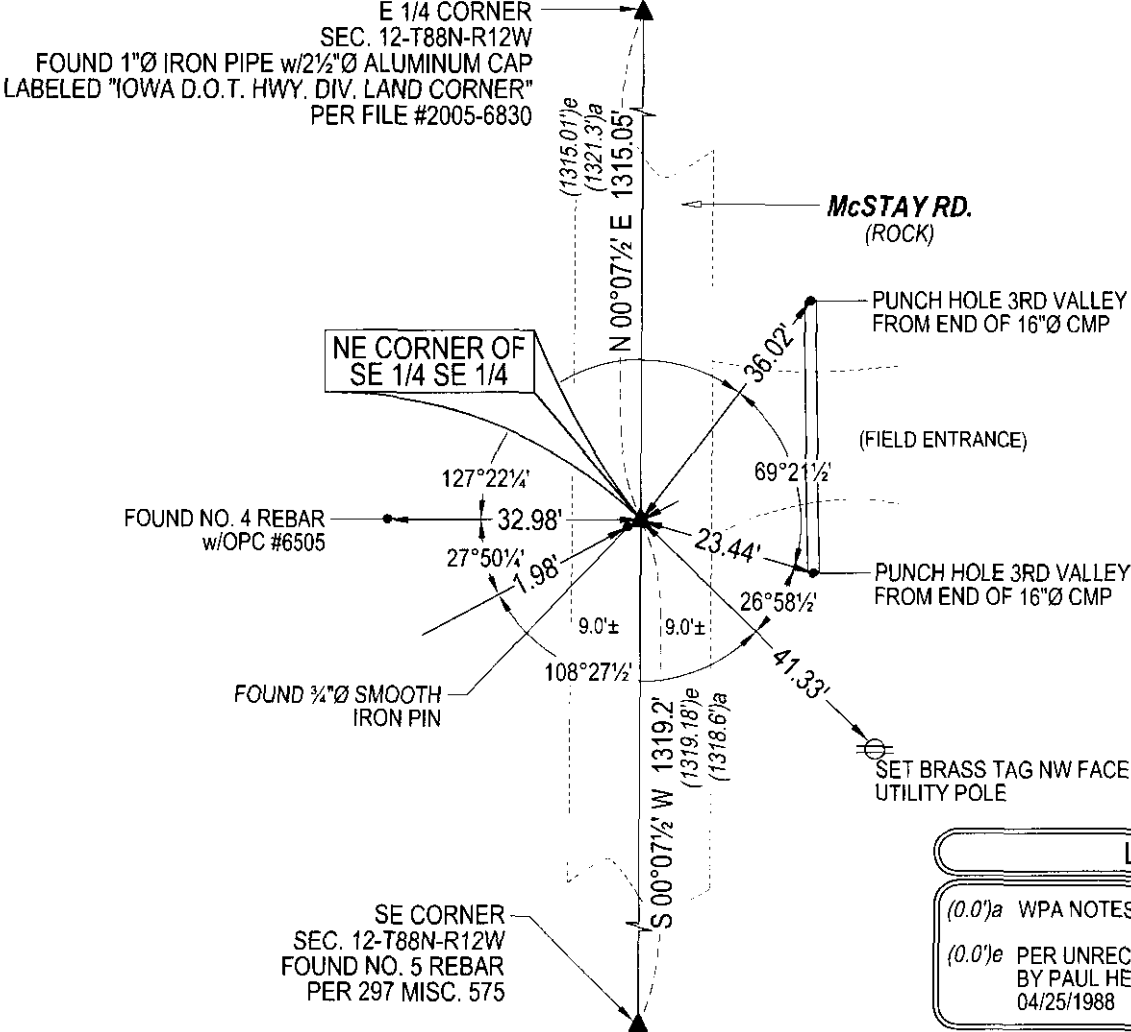
MONUMENT DESCRIPTION AND REMARKS:

NO USPLSCC ON FILE. SURVEY COMPLETED IN THE SE 1/4 OF SEC. 12-T88N-R12W.

→ **NE CORNER SE 1/4 SE 1/4:** NO BLACK HAWK COUNTY ENGINEER REFERENCE TIES AVAILABLE. SEARCHED
AREA WITH MAGNETIC DETECTOR, FOUND 3/4"Ø SMOOTH IRON PIN. SAID PIN IS NOT SHOWN TO BE UTILIZED IN
LAND CORNER SURVEY BY I.S.H.C. DATED 10/13/1971 OR LAND CORNER SURVEYS BY I.S.H.C. DATED
01/25/1977 & 10/05/1977 AND WAS NOT UTILIZED PER UNRECORDED PLAT OF SURVEY BY PAUL J. HELLAND
(FIELD WORK DONE 04/25/1988). THEREFORE SET NO.4 REBAR w/OPC #23212 PER SAID UNRECORDED PLAT
OF SURVEY ON LINE BETWEEN THE SOUTHEAST CORNER AND EAST 1/4 CORNER OF SECTION 12-T88N-R12W.

PLAN VIEW

(SHOW A MINIMUM OF THREE REFERENCE TIES TO DURABLE PHYSICAL OBJECTS, RELEVANT MONUMENTS AND PHYSICAL
CONDITIONS THAT WILL ENABLE RECOVERY OF THE CORNER.)



LEGEND

- (0.0')a WPA NOTES DATED 1941
- (0.0')e PER UNRECORDED PLAT OF SURVEY BY PAUL HELLAND FIELD WORK 04/25/1988

(BEARINGS ARE ASSUMED)



HELLAND ENGINEERING & SURVEYING, LTD.
1107 Technology Parkway
Cedar Falls, Iowa 50613-6951
(319)-266-0161

SHINER = 4d. NAIL & 1 5/16"Ø METAL SHINER DRAWN BY: CDR
BRASS TAG = 4d. NAIL & 13/16"Ø BRASS TAG
OPC = PLASTIC CAP (O=ORANGE, R=RED, Y=YELLOW)
(00') RECORDED AS FILE NAME: 18-192-42.DWG



I hereby certify that this land surveying document was prepared
and the related survey work was performed by me or under my
direct personal supervision and that I am a duly licensed
Professional Land Surveyor under the laws of the State of Iowa.

Kyle J. Helland 8/20/2018
Kyle J. Helland
License Number 23212

My license renewal date is December 31, 2019.
All pages or sheets are covered by this seal except:

LIST CORNERS TO BE INDEXED			
CORNER	SECTION	TOWNSHIP	RANGE
NE COR. SE 1/4 SE 1/4	12	88N	12W
SE COR. NE 1/4 SE 1/4	12	88N	12W
SW COR. NW 1/4 SW 1/4	7	88N	11W
NW COR. SW 1/4 SW 1/4	7	88N	11W

File Number: 2019-00002967 Seq: 1