



Doc ID: 009754980001 Type: GEN
Recorded: 02/04/2020 at 10:56:54 AM
Fee Amt: \$7.00 Page 1 of 1
Black Hawk County Iowa
SANDIE L. SMITH RECORDER

File 2020-00013575

EWJ.
K

WAYNE CLAASSEN ENGINEERING AND SURVEYING, INC.
P.O. BOX 898 WATERLOO, IOWA 50704-0898

PHONE: (VOICE) 319-235-6294
(FAX) 319-235-0028

UNITED STATES PUBLIC LAND SURVEY CORNER CERTIFICATE

Land Survey Monuments situated in Section 12, Township 88 North, Range 12 West, of the Fifth Principal Meridian, Black Hawk County, Iowa.

Previously recorded in _____ in County Recorder's Office.
(book, page, document number, etc.)

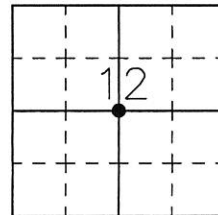
Monument Description and Remarks

Corner Stone Survey for Black Hawk County Interstate No. 380 and 520, I-380-7(31)304--01-07 and FN-520-6(4)--21-07, signed by Charles C. Babbitt, R.L.S. No. 3513, signed 11-01-1976, show a found granite stone 16" deep (near a intersection of fences). Went to location of corner and found pin and 2.5" Dia. disc that reasonably matches above mentioned Corner Stone Certificate.

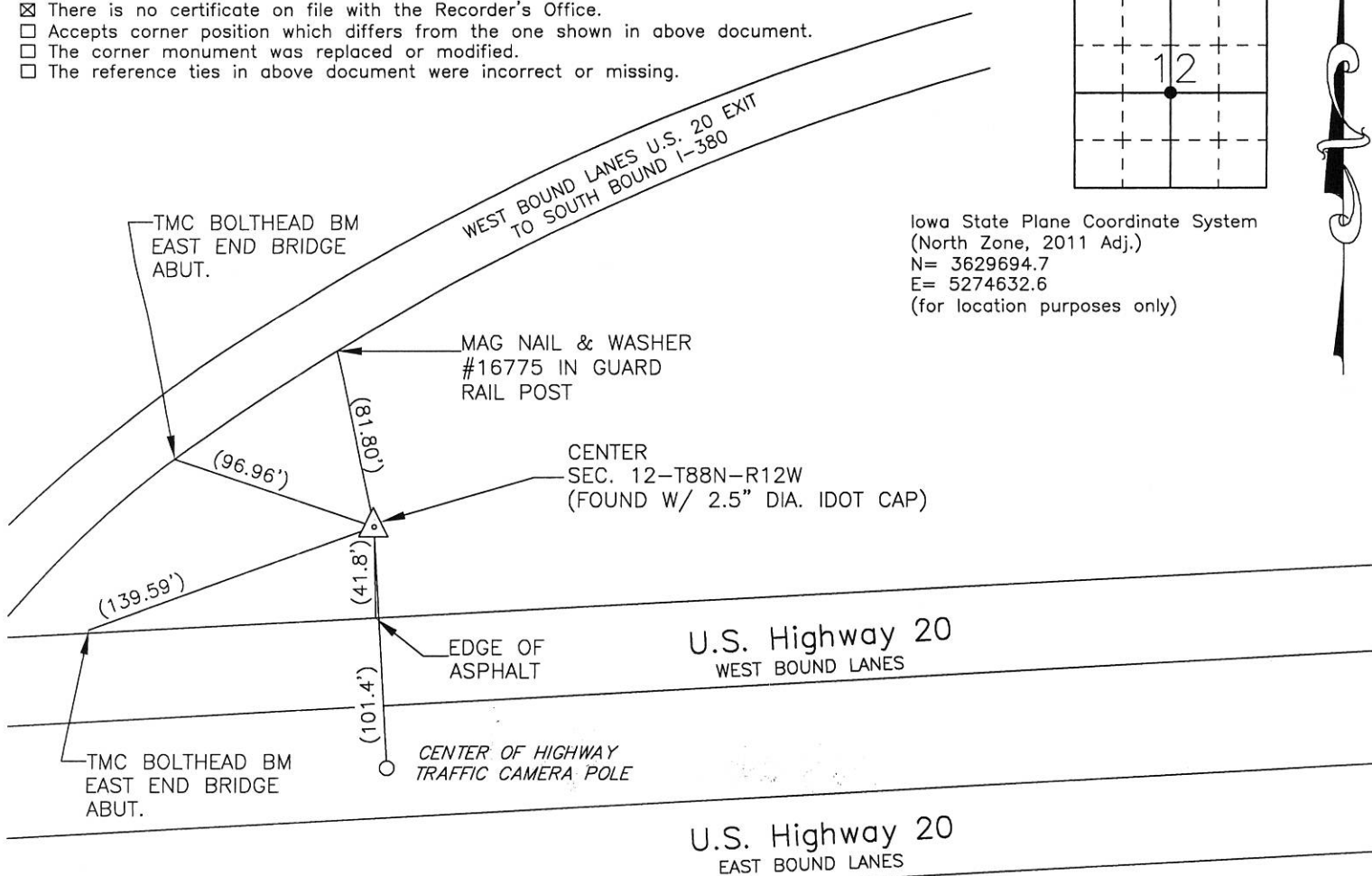
PLAN - VIEW

Reason for filing certificate:

- ☒ There is no certificate on file with the Recorder's Office.
☐ Accepts corner position which differs from the one shown in above document.
☐ The corner monument was replaced or modified.
☐ The reference ties in above document were incorrect or missing.



Iowa State Plane Coordinate System
(North Zone, 2011 Adj.)
N= 3629694.7
E= 5274632.6
(for location purposes only)



735-52

I hereby certify that this land surveying document was prepared and the related survey work was performed by me or under my direct personal supervision and that I am a duly Licensed Land Surveyor under the laws of the State of Iowa.

Signature: David L. Scheil
David L. Scheil, L.S.

Date: JAN 31, 2020 Lic. No. 16775

Pages or Sheets Covered by this Seal: THIS SHEET ONLY.

My license renewal date is December 31, 2020

SEAL

List Corners to be Indexed

| Corners | Section | Twp | Range |
|---------|---------|------|-------|
| CENTER, | 12 | 88 N | 12 W |

