



Doc ID: 004096430001 Type: GEN
Kind: CORNER
Recorded: 03/31/2010 at 09:35:20 AM
Fee Amt: \$9.00 Page 1 of 1
Black Hawk County Iowa
JUDITH A MCCARTHY RECORDER
File **2010-00018039**

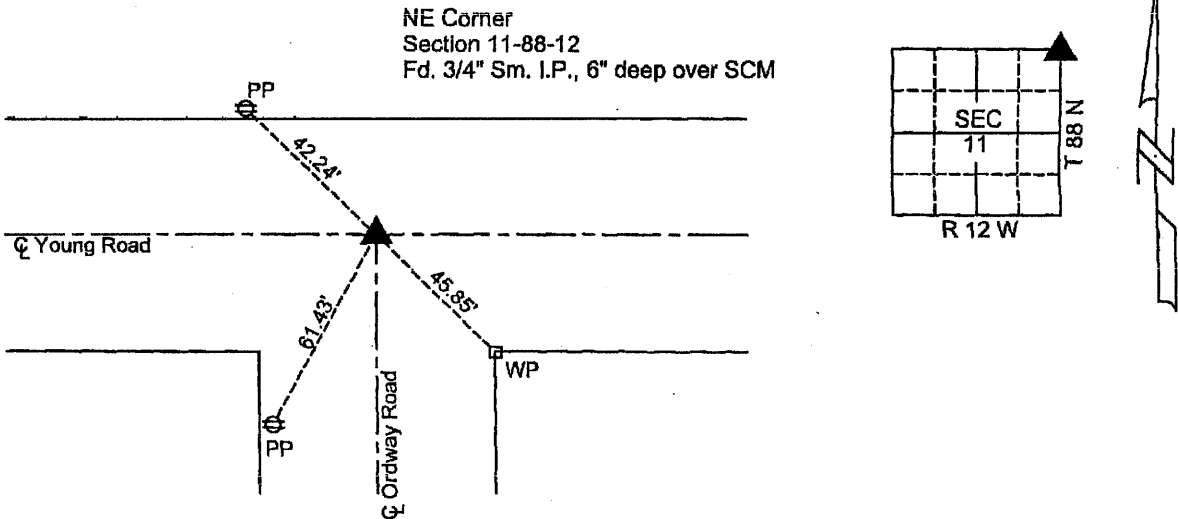
* DANIEL T. CRAWFORD, P.E. & L.S. Crawford Engineering & Surveying, Inc., Independence, Iowa 319/334-7077

UNITED STATES PUBLIC LAND SURVEY CORNER CERTIFICATE
OF

Land Survey Monuments situated in Section 11, Township 88 N, Range 12 W, of the Fifth Principal Meridian, Black Hawk County, Iowa.
Previously recorded in N/A in County Recorder's Office.

Monument Description and Remarks:
Reason for preparing certificate: Current certificate for NE Corner is not on file.
Evidence and detailed procedure used to establish corner position: Corner position previously established.
Monumentation found or placed: Found 3/4" dia. smooth Iron Pin, 6" below surface over SCM

PLAN-VIEW
(Show a minimum of three reference ties to durable physical objects, relevant monuments and physical conditions that will enable recovery of the corner).

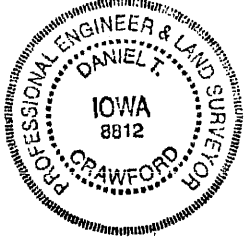


I hereby certify that the survey work was completed and this land surveying document was prepared by me or under my direct personal supervision and that I am a duly licensed land surveyor under the laws of the State of Iowa.

Signature: Daniel T. Crawford
DANIEL T. CRAWFORD, P.E. & L.S.

Date: 3/29/2010 Reg. No. 8812

My license renewal date is December 31, 2010



SEAL

Corners	List Corners to be Indexed		
	Section	Twp.	Range
NE Corner	11	88N	12 W

9.00