

PROOF FILED FOR RECORD AUG 20, 2002, AT 2:00 P.M. FEE 1-5.00X

COMPARED

Patricia A. Less

BLACK HAWK COUNTY RECORDER

HAROLD F MICHELS 410 BRENTWOOD AVE WATERLOO IA 50701

Harold F. Michels 410 Brentwood Ave., Waterloo, Iowa 50701 319-235-7770

UNITED STATES PUBLIC LAND SURVEY CORNER CERTIFICATE

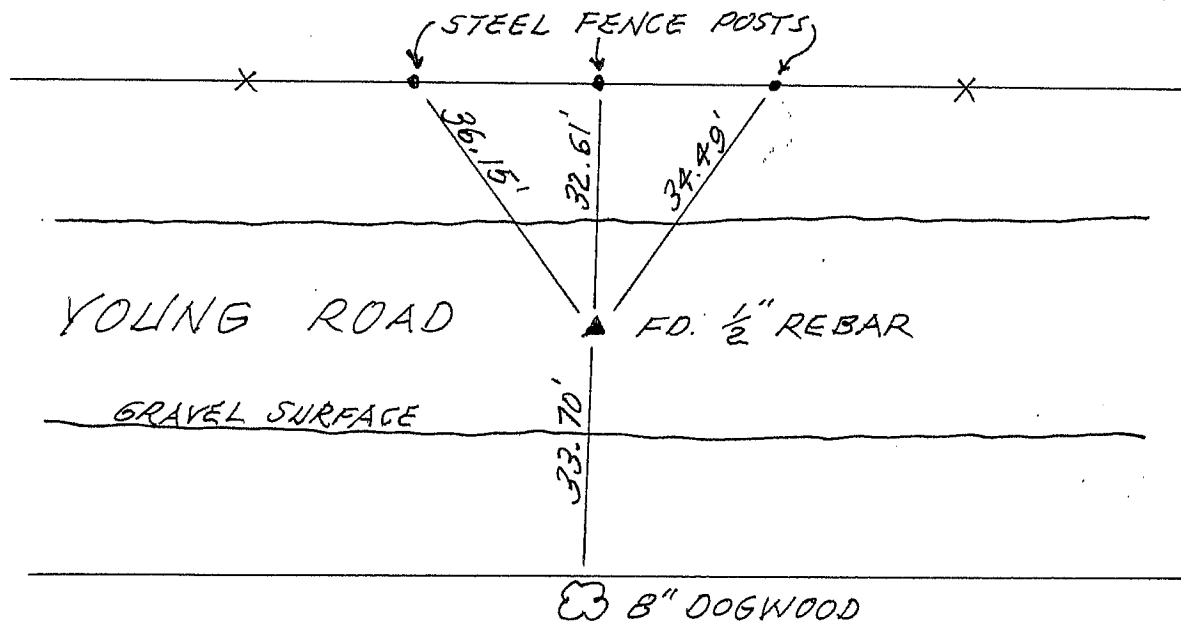
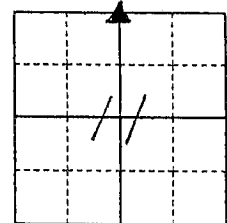
Land Survey Monuments situated in Section 11, Township 88 North, Range 12 West, of the Fifth Principal Meridian, BLACK HAWK County, Iowa.Previously recorded in N/A (book, page, document number, etc.) in County Recorder's Office.

(Show reason for preparing this certificate, the evidence and detailed procedures used in establishing the corner positions and monumentation found or placed.)

Monument Description and Remarks FOUND $\frac{1}{2}$ " REBAR, SET NEW TIES.

PLAN - VIEW

(Show a minimum of three reference ties to durable physical objects, relevant monuments and physical conditions that will enable recovery of the corner.)

NW CORNER NE $\frac{1}{4}$ 

I hereby certify that the survey work was completed and this certificate was prepared by me or under my direct personal supervision and that I am a duly registered land surveyor under the laws of the state of Iowa.

Signature: Harold F. MichelsDate: 8-20-02 Harold F. Michels Reg. No. 3862My registration renewal date is Dec. 31, 2008.

SEAL

List Corners to be Indexed

Corners	Section	Twp	Range
NW COR. NE $\frac{1}{4}$	11	88	12

