



Doc ID: 004096420001 Type: GEN  
Kind: CORNER  
Recorded: 03/31/2010 at 09:34:30 AM  
Fee Amt: \$9.00 Page 1 of 1  
Black Hawk County Iowa  
JUDITH A MCCARTHY RECORDER  
File **2010-00018038**

~~DANIEL T. CRAWFORD, P.E. & L.S.~~ Crawford Engineering & Surveying, Inc., Independence, Iowa 319/334-7077

UNITED STATES PUBLIC LAND SURVEY CORNER CERTIFICATE  
OF

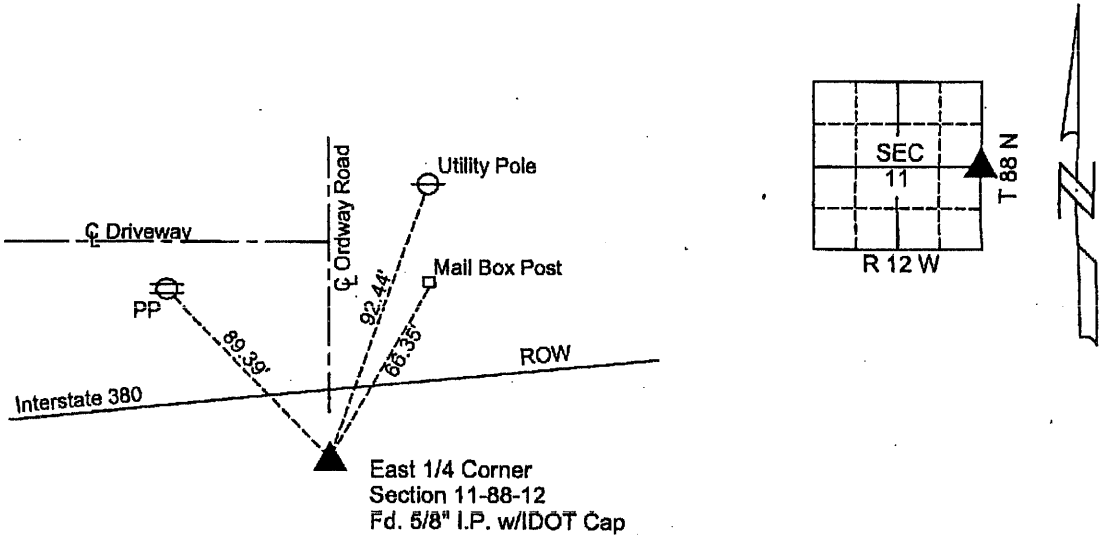
Land Survey Monuments situated in Section 11, Township 88 N, Range 12 W, of the Fifth Principal Meridian, Black Hawk County, Iowa.  
Previously recorded in N/A in County Recorder's Office.

Monument Description and Remarks:  
Reason for preparing certificate: Current certificate for East 1/4 Corner is not on file.  
Evidence and detailed procedure used to establish corner position: Corner position previously established.

Monumentation found or placed: Found 5/8" I.P. w/IDOT Cap, 4" below surface

PLAN-VIEW

(Show a minimum of three reference ties to durable physical objects, relevant monuments and physical conditions that will enable recovery of the corner).



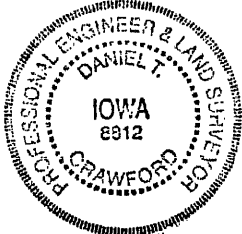
I hereby certify that the survey work was completed and this land surveying document was prepared by me or under my direct personal supervision and that I am a duly licensed land surveyor under the laws of the State of Iowa.

Signature: Daniel T. Crawford  
DANIEL T. CRAWFORD, P.E. & L.S.

Date: 3/29/2010 Reg. No. 8812

My license renewal date is December 31, 2010

SEAL



| Corners         | List Corners to be Indexed |      |       |
|-----------------|----------------------------|------|-------|
|                 | Section                    | Twp. | Range |
| East 1/4 Corner | 11                         | 88N  | 12 W  |

✓18.00  
(9.00)