

PREPARED BY: BLACK HAWK COUNTY ENGINEERS OFFICE
316 E. FIFTH STREET, ROOM 211 WATERLOO, IOWA 50703
PH.# (319) 833-3008
FAX.# (319) 833-3139
SLSI 9-94
BHCO 03-09

UNITED STATES PUBLIC LAND SURVEY CORNER CERTIFICATE OF
Land Survey Monuments situated in Section 10, Township 88 N,
Range 12 W, of the Fifth Principal Meridian, BLACK HAWK County, Iowa.
Previously recorded in Misc. Book 344, Page 127, in County Recorder's Office.

(Show reason for preparing this certificate): The corner monument has been Replaced or Modified, per Ia. Code 355.11(1)(c)

(Evidence and detailed procedures used in establishing the corner position(s) and monumentation found or placed.)

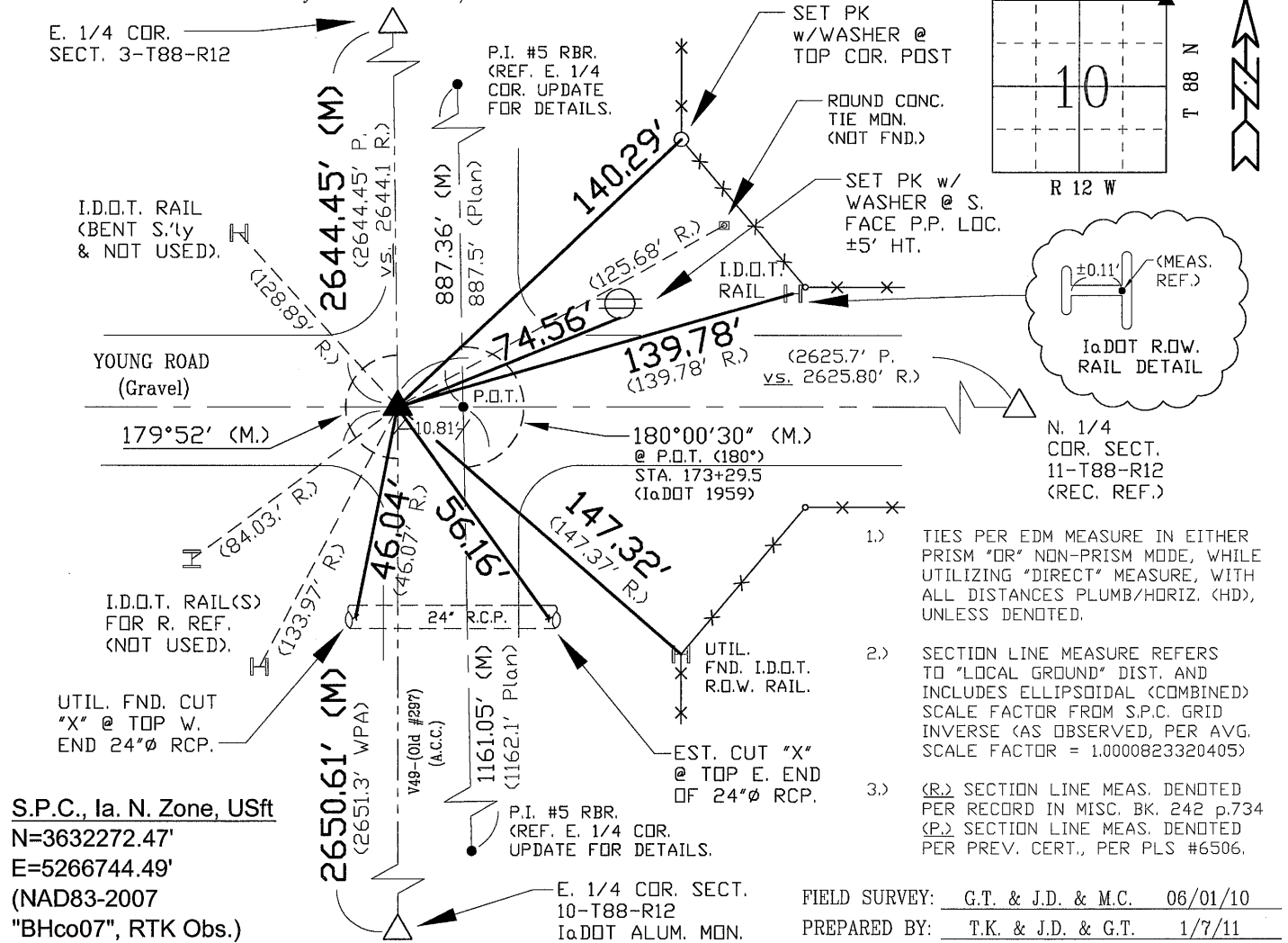
Monument Description and Remarks: N.E. COR.
FOUND 3/4" SQUARE PIN IN A.C.C. PAVEMENT @ 10.8' (vs. 10.6' IADOT PROJ. F-1000(2) PER
AS-BUILT DTD. 1959) WEST OF P.O.T. (NAIL) IN THE C.L. OF OLD IOWA HWY. #297, PER
EXISTING RECORD. EXISTING CORNER LOC. AS RE-EST. IN PLAT OF SURVEY PER MISC. BK.
242 p.734. LAND COR. & P.O.T. TEMP. REF. PER RTK GPS PRIOR TO 2009 H.M.A. RESURF.
PROJECT. H.M.A. PROJ. MILLED -2" EXIST. ACC AND ADDED +4.5" HMA PAVEMENT. NEW
H.M.A. PVMT. @ LAND COR. LOC. WAS FOUND EXCAVATED (BY OTHER) PRIOR TO RE-EST.,
YET NOT TO FULL DEPTH. LAND COR. RESET AS #5 REBAR w/ 2.5" ALUM. CAP LOC. ±0.60'
E. OF "WEST" EDGE PAVEMENT, IN SMALL A.C.C. PATCH. P.O.T. RESET w/#5 STUB REBAR
@ FND. NAIL LOCATION BEING ±C.L. RAY. RD. AND LOC. 10.81' EAST OF SECTION CORNER.

NOTE: ALL DISTANCES PLUMB/HORIZ.
(H.D.), "UNLESS DENOTED".

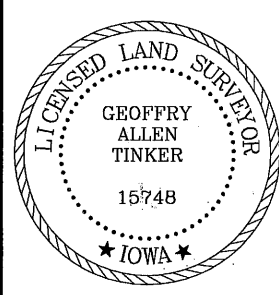
PLAN VIEW
"NOT TO SCALE"

BHco Hist. Ties: BK. #1001 p.10 88-12
FIELD BOOK: BHco. #489 p.p. 1-2

(Show a minimum of three reference ties to durable physical objects, relevant monuments and physical conditions that will enable recovery of the corner.)



CERTIFICATION



I hereby certify that this land surveying document was prepared and the related survey work was performed by me or under my direct personal supervision and that I am a duly licensed Land Surveyor under the laws of the State of Iowa.
Geoffrey Allen Tinker 01/07/2011
Geoffrey Allen Tinker (date)
License Number 15748
My license renewal date is December 31, 2012
Pages or sheets covered by this seal:
This Land Corner Certificate Only.

LIST CORNERS TO BE INDEXED

Corner	Section -	Township -	Range
N.E. Cor.	10	88 N	12 W
N.W. Cor.	11	88 N	12 W
S.E. Cor.	03	88 N	12 W
S.W. Cor.	02	88 N	12 W

INDEX OF ABBREVIATIONS

- (M) = "Measured" Dimension
- (P) = "Platted" Dimension
- (R) = "Record" Dimension
- (C) = "Calculated" Dimension
- "IGS" = Iowa Geodetic Survey
- "WPA" = Works Progress Admin. Survey
- "Ø" = per George Miller Survey (BHco Surveyor 1858-1860)
- "6" = per John Ball Survey (BHco Surveyor 1866-1891)
- "N" = per Nathan Barber Survey (BHco Surveyor 1908-1931)
- "NP" = Reflectorless EDM Meas.
- "MLM" = Indirect Measure
- "CM" = Concrete Monument
- "SM" = Survey Marker Spike/Tag
- "PK" = PK/MAG Nail Brand Style