

SC  
MISC  
INDEX VS  
MARGIN  
PROOF  
COMPARE

008019

BLACK HAWK COUNTY IOWA:SS  
FILED FOR RECORD Sep 26, 2001 at  
4:00 P.M. AND RECORDED IN BOOK 344  
OF MISC AT PAGE 127

*Paul H. Helland* RECORDER

FEE 1-5.00x  
PAUL HELLAND

Paul H. Helland, 1107 Technology Parkway, Cedar Falls, Iowa 50613-6951, (319)-266-0161

## UNITED STATES PUBLIC LAND SURVEY CORNER CERTIFICATE OF

LAND SURVEY MONUMENTS SITUATED IN SECTION NO. 10, TOWNSHIP NO. 88 NORTH, RANGE  
NO. 12 WEST OF THE FIFTH PRINCIPAL MERIDIAN, BLACK HAWK COUNTY, IOWA.

PREVIOUSLY RECORDED IN BOOK \_\_\_\_\_, PAGE \_\_\_\_\_.

(SHOW REASON FOR PREPARING THIS CERTIFICATE, THE EVIDENCE AND DETAILED PROCEDURES USED IN ESTABLISHING THE  
CORNER POSITIONS AND MONUMENTATION FOUND OR PLACED.)

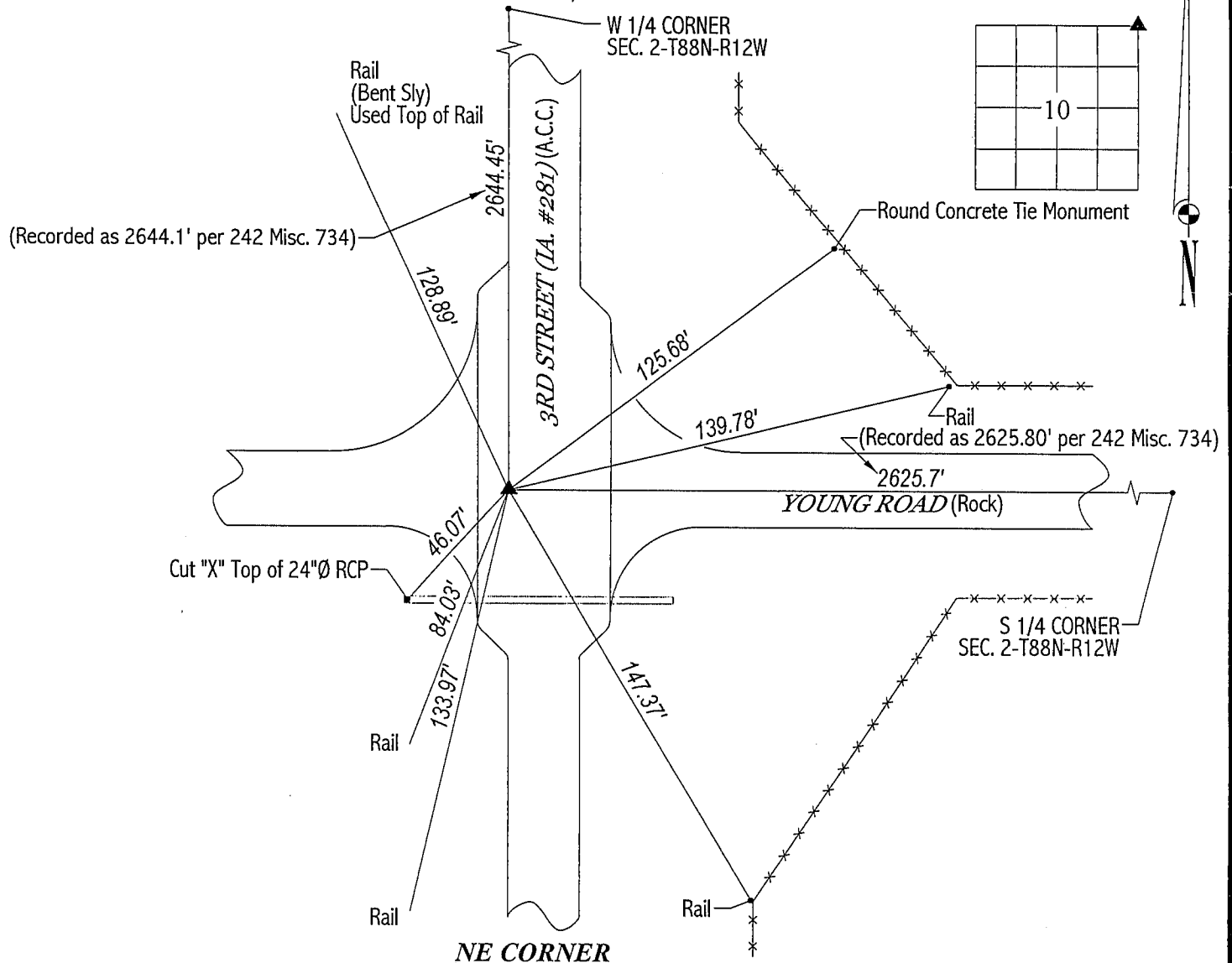
### MONUMENT DESCRIPTION AND REMARKS:

SURVEY DONE IN NE 1/4 OF SE 1/4 OF SEC. 3-T88N-R12W.

NE CORNER: All county reference ties are obliterated. Found 3/4" square pin in A.C.C. pavement 10.78' (recorded as 10.6')  
West of a nail in the centerline of Iowa Hwy. #281. Corner as located fits position as established in Plat of Survey recorded  
in 242 Misc. 734.

### PLAN VIEW

(SHOW A MINIMUM OF THREE REFERENCE TIES TO DURABLE PHYSICAL OBJECTS, RELEVANT MONUMENTS AND PHYSICAL  
CONDITIONS THAT WILL ENABLE RECOVERY OF THE CORNER.)



HELLAND ENGINEERING & SURVEYING, LTD.  
1107 Technology Parkway  
Cedar Falls, Iowa 50613-6951  
(319)-266-0161

FILE NAME: 01-2590CC.DRG



I hereby certify that this land surveying document was prepared  
and the related survey work was performed by me or under my  
direct personal supervision and that I am a duly licensed Land  
Surveyor under the laws of the State of Iowa.

*Paul H. Helland 9/24/01*  
Paul H. Helland  
License Number 6505  
My license renewal date is December 31, 2001.  
All pages or sheets are covered by this seal except:

LIST CORNERS TO BE INDEXED  
CORNER SECTION TOWNSHIP RANGE  
NE CORNER 10 88N 12W