

HELLAND ENGINEERING & SURVEYING LTD

Jeffrey P. Helland, 1107 Technology Parkway, Cedar Falls, Iowa 50613-6951, (319)-266-0161

UNITED STATES PUBLIC LAND SURVEY CORNER CERTIFICATE OF

LAND SURVEY MONUMENTS SITUATED IN SECTION NO. 10, TOWNSHIP NO. 88 NORTH, RANGE
NO. 12 WEST OF THE FIFTH PRINCIPAL MERIDIAN, BLACK HAWK COUNTY, IOWA.
PREVIOUSLY RECORDED IN FEE BK #2003-4150

(SHOW REASON FOR PREPARING THIS CERTIFICATE, THE EVIDENCE AND DETAILED PROCEDURES USED IN ESTABLISHING THE
CORNER POSITIONS AND MONUMENTATION FOUND OR PLACED.)

MONUMENT DESCRIPTION AND REMARKS:

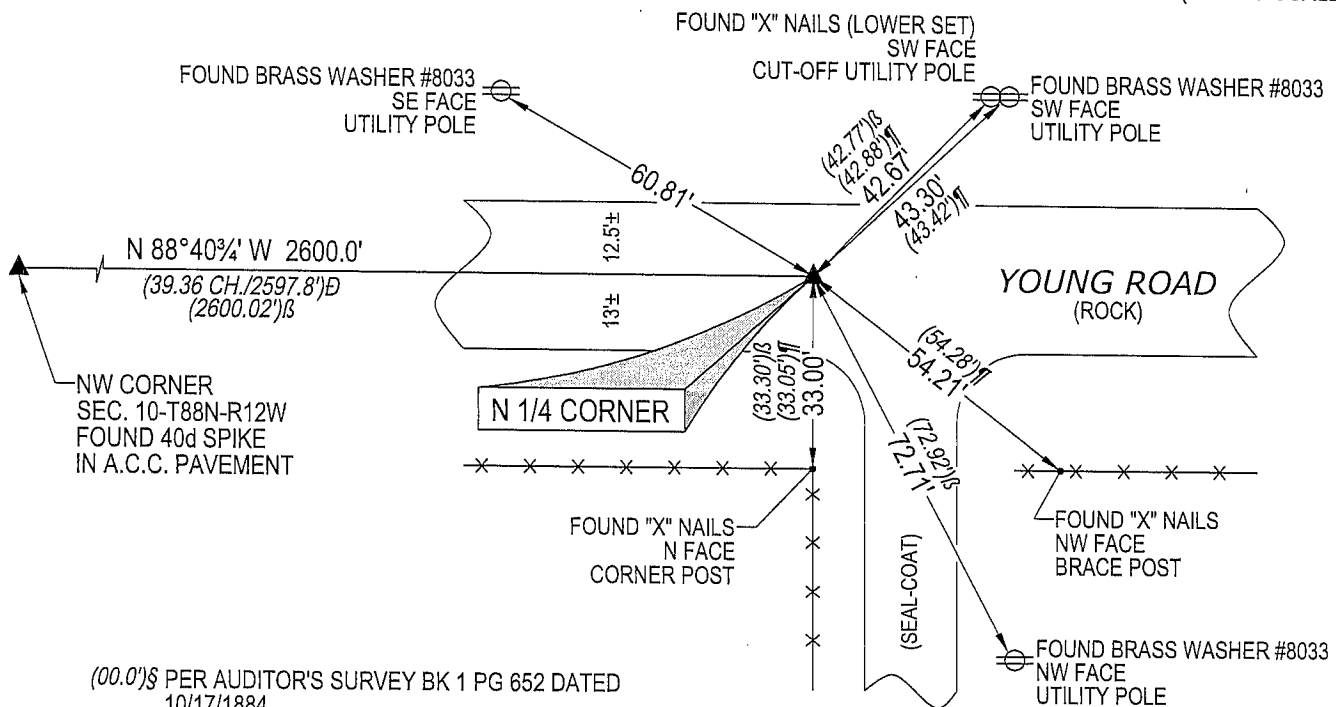
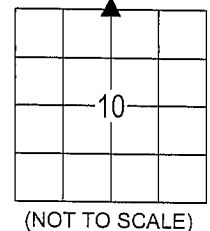
USPLSCC ON FILE FEE BK #2003-4150 MONUMENTATION HAS CHANGED.

SURVEY COMPLETED IN THE NE 1/4 OF SEC. 9-T88N-R12W AND NW 1/4 SEC. 10-T88N-R12W.

- **N 1/4 CORNER:** AUDITOR'S SURVEY BK 1 PG 652 DATED 10/17/1884 CALLS FOR [STONE & STAKE]. LAND
CORNER SURVEY DATED 11/9/1976 BY CHARLES C. BABBITT CALLS FOR [FOUND 1IN PINCHED PIPE 6" DEEP].
FEE BK #2003-4150 CALLS FOR [FOUND SPIKE OVER CONCRETE MONUMENT]. FOUND SPIKE 0.3' DEEP BESIDE
A 1"O.D. IRON PINCHED PIPE 0.6' DEEP. UTILIZED SAID PINCHED PIPE AS CORNER, AS IT CORRESPONDS
BETTER TO STATE REFERENCE TIES.

PLAN VIEW

(SHOW A MINIMUM OF THREE REFERENCE TIES TO DURABLE PHYSICAL OBJECTS, RELEVANT MONUMENTS AND PHYSICAL
CONDITIONS THAT WILL ENABLE RECOVERY OF THE CORNER.)



(00.0') B PER AUDITOR'S SURVEY BK 1 PG 652 DATED
10/17/1884

(00.0') B PER LAND CORNER SURVEY DATED 11/9/1976
BY CHARLES C. BABBITT

(00.0') B PER USPLSCC FEE BK #2003-4150

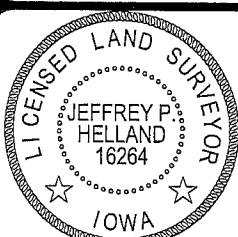
(BEARINGS ARE BASED UPON GEODETIC NORTH)



HELLAND ENGINEERING & SURVEYING, LTD.
1107 Technology Parkway
Cedar Falls, Iowa 50613-6951
(319)-266-0161

SHINER = 8D NAIL & 1 15/16" Ø METAL SHINER
OPC = PLASTIC CAP (O=ORANGE, R=RED, Y=YELLOW)

(00') RECORDED AS FILE NAME: 06-191C3.DWG



I hereby certify that this land surveying document was prepared
and the related survey work was performed by me or under my
direct personal supervision and that I am a duly licensed Land
Surveyor under the laws of the State of Iowa.

Jeffrey P. Helland 6/7/06
Jeffrey P. Helland
License Number 16264
My license renewal date is December 31, 2007.
All pages or sheets are covered by this seal except:

LIST CORNERS TO BE INDEXED

CORNER	SECTION	TOWNSHIP	RANGE
N 1/4 CORNER	10	88N	12W