

Reserved for County Recorder's use.

2024-14909  
RECORDED: 05/29/2024 02:14:02 PM  
RECORDING FEE: \$7.00  
REVENUE TAX: \$  
COMBINED FEE: \$7.00  
SANDIE L. SMITH, RECORDER  
BLACK HAWK COUNTY, IOWA

Jeffrey P. Helland, 6109 Chancellor Drive, Cedar Falls, Iowa 50613-6916, (319)-266-0161

UNITED STATES PUBLIC LAND SURVEY CORNER CERTIFICATE  
OF

LAND SURVEY MONUMENTS SITUATED IN SECTION NO. 10, TOWNSHIP NO. 88 NORTH, RANGE NO. 12 WEST OF THE FIFTH PRINCIPAL MERIDIAN, BLACK HAWK COUNTY, IOWA.  
PREVIOUSLY RECORDED IN N/A.

(SHOW REASON FOR PREPARING THIS CERTIFICATE, THE EVIDENCE AND DETAILED PROCEDURES USED IN ESTABLISHING THE CORNER POSITIONS AND MONUMENTATION FOUND OR PLACED.)

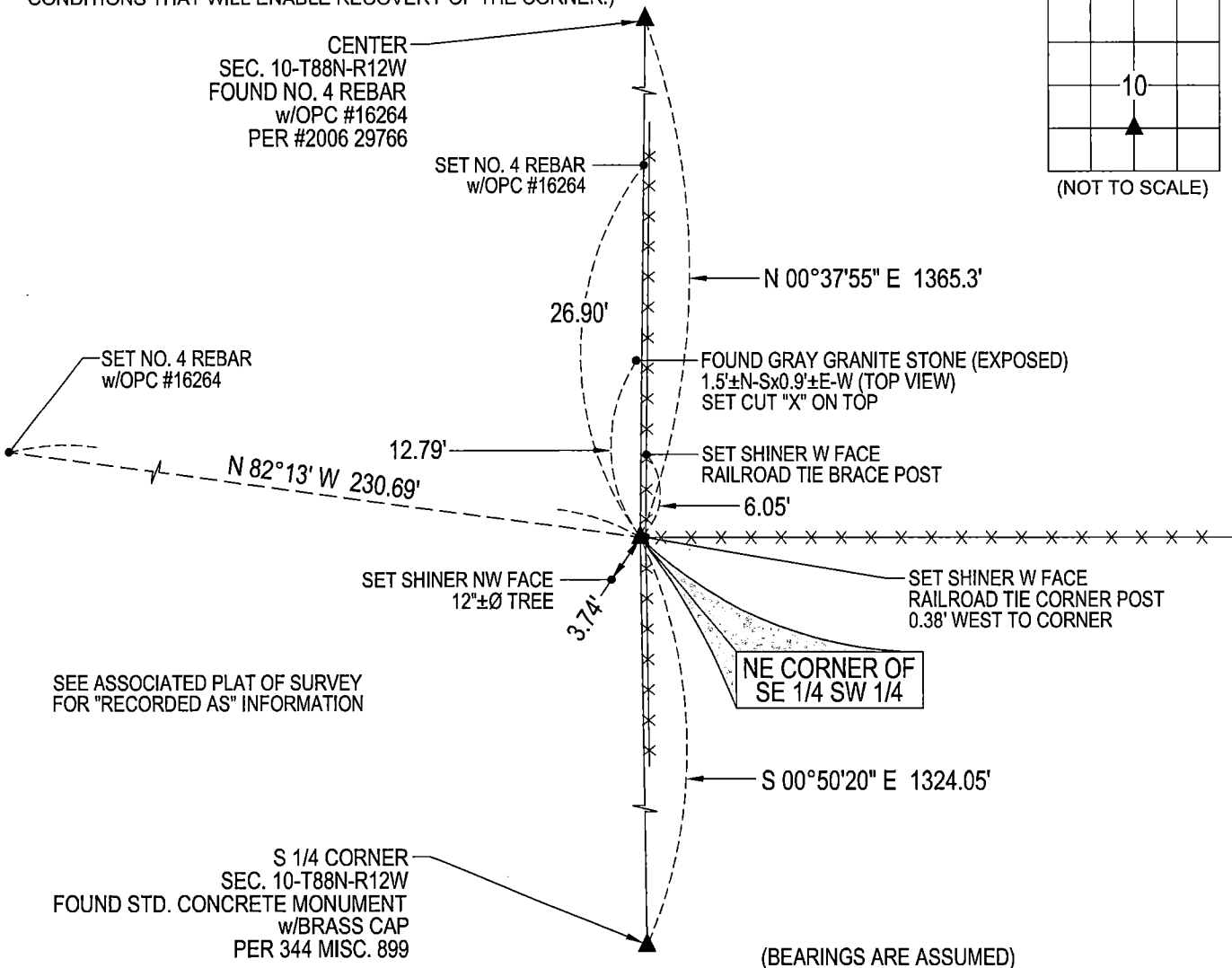
MONUMENT DESCRIPTION AND REMARKS:

NO USPLSCC ON FILE. SURVEY COMPLETED IN THE NE 1/4 SW 1/4 AND SE 1/4 SW 1/4 OF SEC. 10-T88N-R12W.

NE CORNER OF SE 1/4 SW 1/4: HISTORICAL SURVEY BY JOHN BALL DATED 10/17-18/1884 ESTABLISHED CORNER BUT DOES NOT STATE WHAT WAS FOUND OR SET. STARTED EXCAVATING AROUND RAILROAD TIE CORNER POST AND FOUND LIMESTONE 0.8'±N-Sx0.3'±E-W (TOP VIEW) 0.4'± DEEP. SET CUT "X" ON TOP OF LIMESTONE AND SET NO. 4 REBAR 0.18' WEST OF CUT "X" FOR MAGNETIC DETECTION. UTILIZED SAID FOUND LIMESTONE AS THE CORNER.

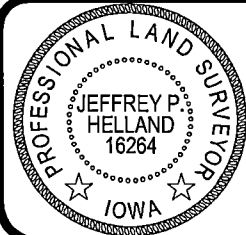
PLAN VIEW

(SHOW A MINIMUM OF THREE REFERENCE TIES TO DURABLE PHYSICAL OBJECTS, RELEVANT MONUMENTS AND PHYSICAL CONDITIONS THAT WILL ENABLE RECOVERY OF THE CORNER.)



HELLAND ENGINEERING & SURVEYING, LTD.  
6109 Chancellor Drive  
Cedar Falls, Iowa 50613-6916  
(319)-266-0161

SHINER = 4d. NAIL & 1 5/16"Ø METAL SHINER DRAWN BY: JPH  
BRASS TAG = 4d. NAIL & 13/16"Ø BRASS TAG  
OPC = PLASTIC CAP (O=ORANGE, R=RED, Y=YELLOW)  
(00) RECORDED AS FILE NAME: 24-110-52.DWG



I hereby certify that this land surveying document was prepared and the related survey work was performed by me or under my direct personal supervision and that I am a duly licensed Professional Land Surveyor under the laws of the State of Iowa.  
Jeffrey P. Helland  
License Number 16264  
My license renewal date is December 31, 2025.  
All pages or sheets are covered by this seal except:

LIST CORNERS TO BE INDEXED			
CORNER	SECTION / TOWNSHIP / RANGE		
NE COR. SE 1/4 SW 1/4	10	88N	12W
SE COR. NE 1/4 SW 1/4	10	88N	12W
SW COR. NW 1/4 SE 1/4	10	88N	12W
NW COR. SW 1/4 SE 1/4	10	88N	12W