

INDEX

BLACK HAWK COUNTY, IOWA:ss

FEE BOOK # 2006 29766

PROOF

FILED FOR RECORD

JUN 14

2006

AT 10:00A.

M.

FEE 1-5.00-1.00/

COMPARED

Jeffrey P. Helland

BLACK HAWK COUNTY RECORDER

HELLAND ENGINEERING & SURVEYING LTD

Jeffrey P. Helland, 1107 Technology Parkway, Cedar Falls, Iowa 50613-6951, (319)-266-0161

UNITED STATES PUBLIC LAND SURVEY CORNER CERTIFICATE
OFLAND SURVEY MONUMENTS SITUATED IN SECTION NO. 10, TOWNSHIP NO. 88 NORTH, RANGE
NO. 12 WEST OF THE FIFTH PRINCIPAL MERIDIAN, BLACK HAWK COUNTY, IOWA.

PREVIOUSLY RECORDED IN _____

(SHOW REASON FOR PREPARING THIS CERTIFICATE, THE EVIDENCE AND DETAILED PROCEDURES USED IN ESTABLISHING THE
CORNER POSITIONS AND MONUMENTATION FOUND OR PLACED.)

MONUMENT DESCRIPTION AND REMARKS:

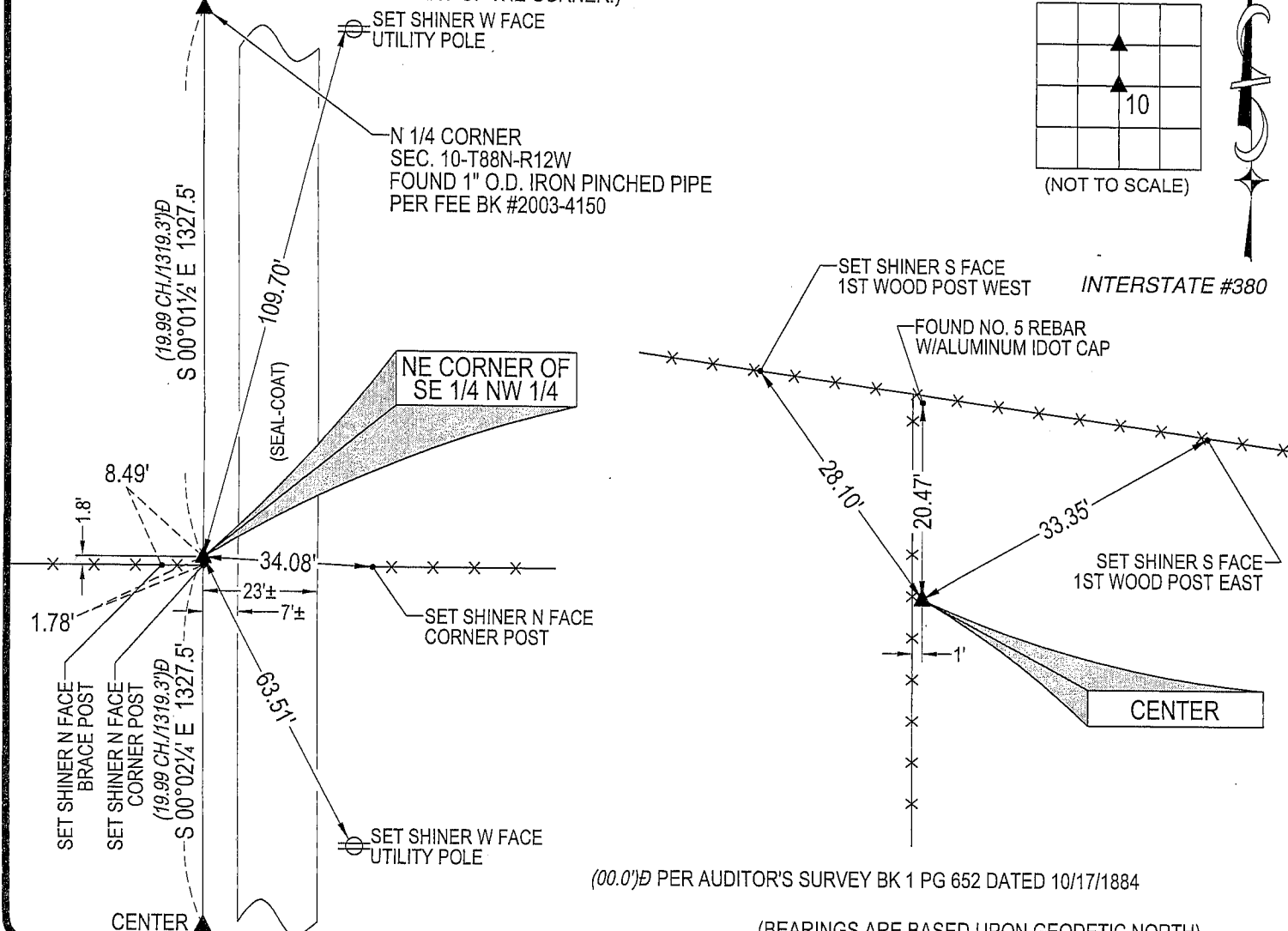
NO USPLSCC ON FILE.

SURVEY COMPLETED IN THE NE 1/4 OF SEC. 9-T88N-R12W AND NW 1/4 SEC. 10-T88N-R12W.

→ **NE CORNER OF SE 1/4 NW 1/4:** AUDITOR'S SURVEY BK 1 PG 652 DATED 10/17/1884 CALLS FOR [STONE & STAKE]. NO STATE OR BLACK HAWK COUNTY ENGINEER REFERENCE TIES EXIST. FOUND LIMESTONE (0.5'x0.5' TOP VIEW) 1.7' DEEP. LIMESTONE CORRESPONDS TO DISTANCES FROM THE N 1/4 CORNER AND THE CENTER OF SAID SEC. 10. SET NO. 4 REBAR W/OPC #16264 ABOVE LIMESTONE.

→ **CENTER:** AUDITOR'S SURVEY BK 1 PG 652 DATED 10/17/1884 CALLS FOR [STONE & STAKE]. LAND CORNER SURVEY DATED 11/9/1976 BY CHARLES C. BABBITT CALLS FOR [FOUND LIMESTONE 9" DEEP]. FOUND LIMESTONE (0.5'E-Wx0.2'N-Sx1.2' TOP VIEW) 1.6' DEEP. SET NO. 4 REBAR W/OPC #16264 ABOVE.

PLAN VIEW

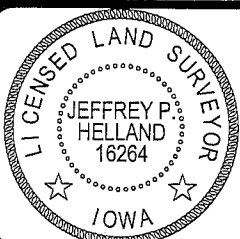
(SHOW A MINIMUM OF THREE REFERENCE TIES TO DURABLE PHYSICAL OBJECTS, RELEVANT MONUMENTS AND PHYSICAL
CONDITIONS THAT WILL ENABLE RECOVERY OF THE CORNER.)

(BEARINGS ARE BASED UPON GEODETIC NORTH)

HELLAND ENGINEERING & SURVEYING, LTD.
1107 Technology Parkway
Cedar Falls, Iowa 50613-6951
(319)-266-0161SHINER = 8D NAIL & 1 15/16"Ø METAL SHINER
OPC = PLASTIC CAP (O=ORANGE, R=RED, Y=YELLOW)

(00') RECORDED AS

FILE NAME: 06-191C4.DWG

I hereby certify that this land surveying document was prepared
and the related survey work was performed by me or under my
direct personal supervision and that I am a duly licensed Land
Surveyor under the laws of the State of Iowa.*Jeffrey P. Helland* 6/7/06
Jeffrey P. Helland
License Number 16264
My license renewal date is December 31, 2007.
All pages or sheets are covered by this seal except:

LIST CORNERS TO BE INDEXED

CORNER	SECTION	TOWNSHIP	RANGE
NE CORNER SE 1/4 NW 1/4	10	88N	12W
CENTER	10	88N	12W