

REC FEE 5.00
E FEE 20.00
TRAN FEE _____
REV FEE _____
GF 83 700

Doc ID: 005650060001 Type: GEN
Recorded: 12/31/2014 at 08:33:47 AM
Fee Amt: \$7.00 Page 1 of 1
Black Hawk County Iowa
SANDIE L. SMITH RECORDER
File **2015-00010641**

UNITED STATES PUBLIC LAND SURVEY CORNER CERTIFICATE OF

Land Survey Monuments situated in Section 09, Township 88 North, Range 12 West, of the Fifth Principal Meridian, Black Hawk County, Iowa
Previously recorded in Book N/A, Page N/A.

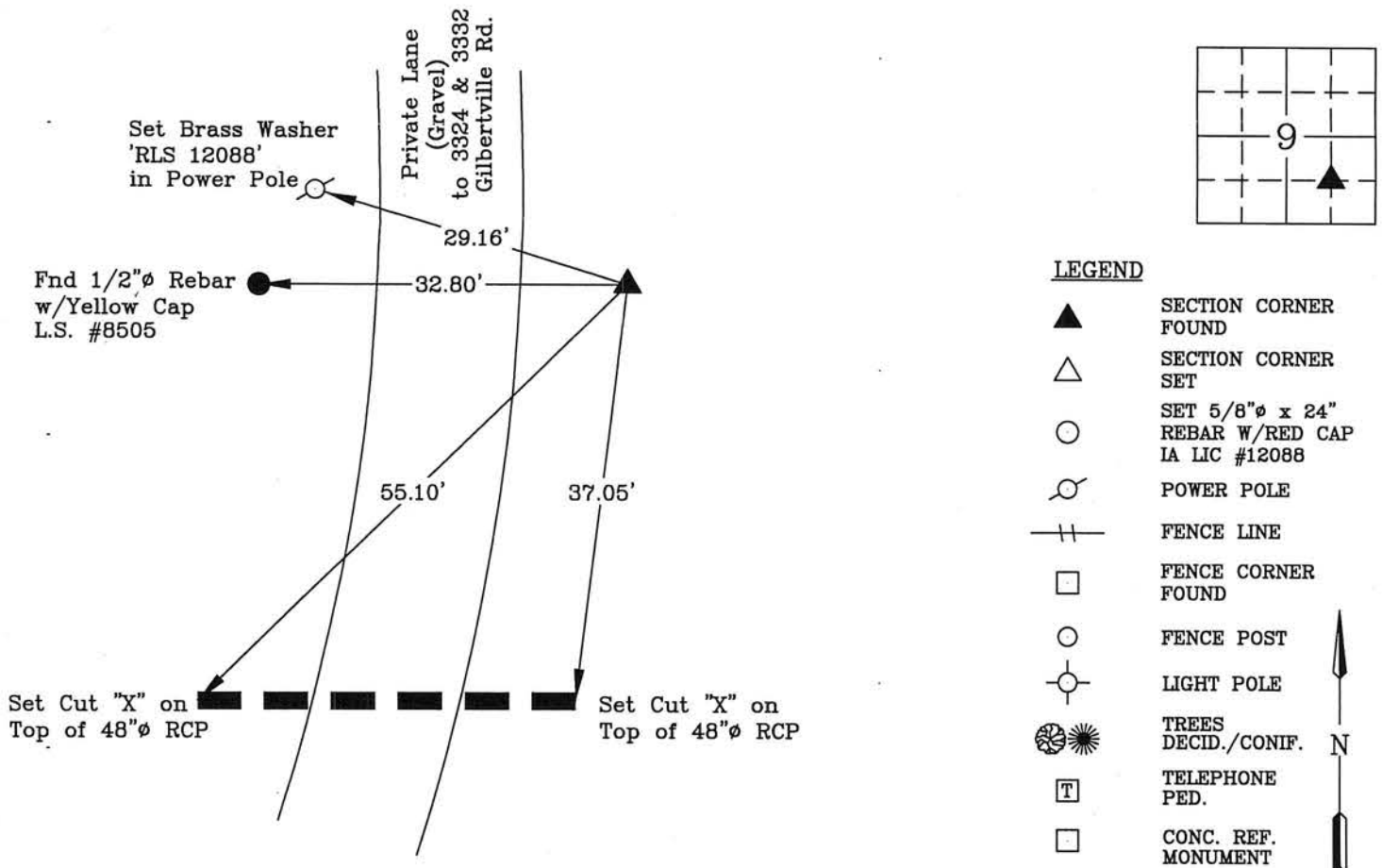
Show reason for preparing this certificate, the evidence and detailed procedures used in establishing the corner positions and monumentation found or placed.)

Monument Description and Remarks: NE Corner SW 1/4 SE 1/4 Section 09-T88N-R12W

Searched area visually and found steel fence post next to 1/2"Ø Rebar w/Yellow Cap L.S. #8505
per Plat of Survey recorded at Fee Book #2004 9915, used 1/2"Ø Rebar w/Yellow Cap L.S. #8505 as
corner. This corner was used for a survey in the SW 1/4 SE 1/4 09-T88N-R12W.
This corner certificate is being prepared because there was no previous certificate on file.

PLAN - VIEW

(Show a minimum of three reference ties to durable physical objects, relevant monuments and physical conditions recovery of the corner.)



I hereby certify that this land surveying document was prepared and the related survey work was performed by me or under my direct personal supervision and that I am a duly licensed Land Surveyor under the laws of the State of Iowa.



Wendell J. Lupkes 12-29-2014
WENDELL J. LUPKES, L.S. DATE
License number 12088
My license renewal date is December 31, 2014
Pages or sheets covered by this seal: 1

List Corner to be Indexed

Corner	Section	Twp	Range
NE Cor.	09	88 N	12 W
SW 1/4			
SE 1/4			



VJ Engineering
1501 Technology Parkway
Cedar Falls, Iowa - 319-266-5829

SECTION CORNER
REFERENCE TIES

scale
NONE
drawn by
MAK
date
11/24/14