

V J ENGINEERING 1501 TECHNOLOGY PARKWAY SUITE 100 CEDAR FALLS IA 50613

UNITED STATES PUBLIC LAND SURVEY CORNER CERTIFICATE OF

Land Survey Monuments situated in Section 9, Township 88 N, Range 12W, of the Fifth Principal Meridian, BLACK HAWK County, Iowa
Previously recorded in Book _____, Page _____.

Show reason for preparing this certificate, the evidence and detailed procedures used in establishing the corner positions and monumentation found or placed.)

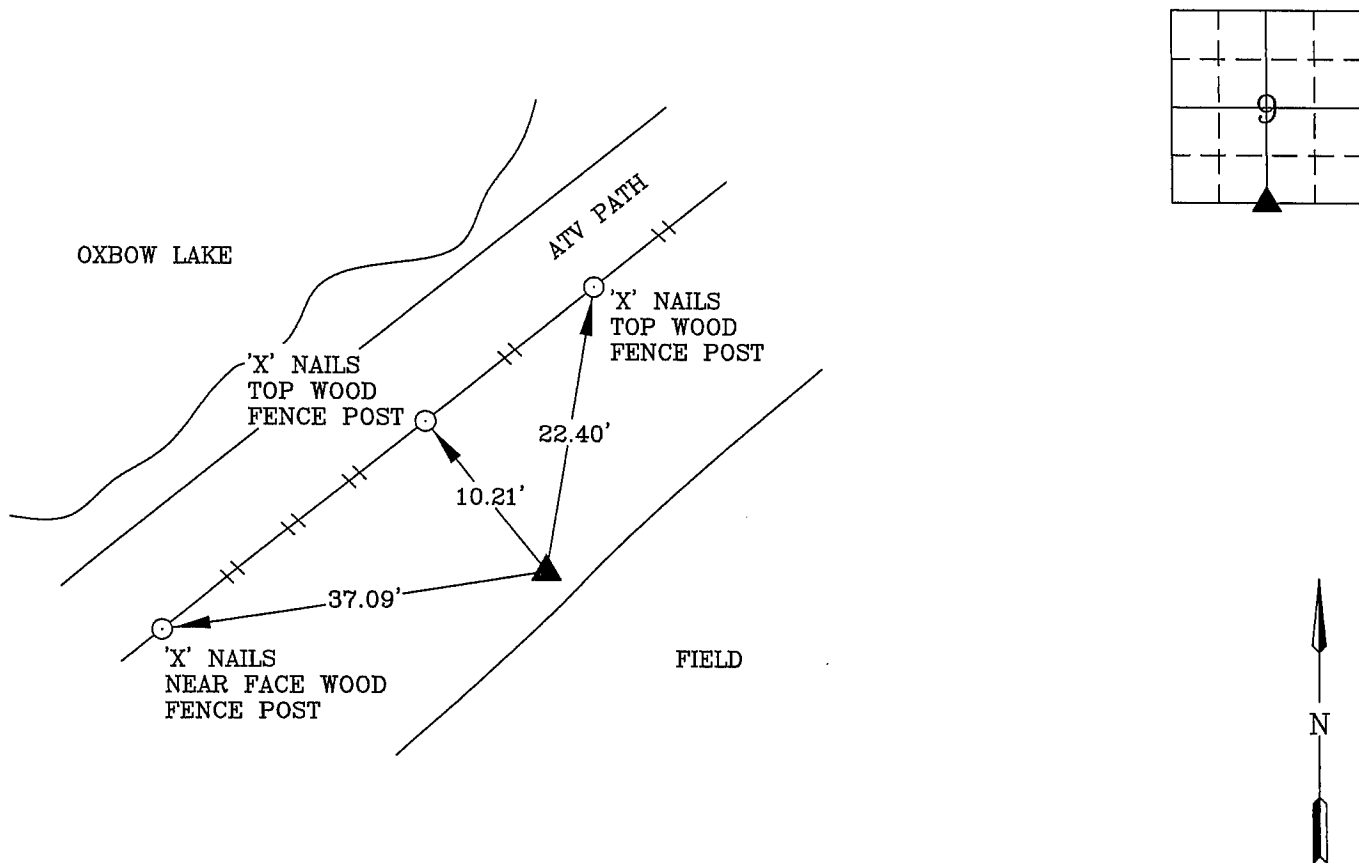
Monument Description and Remarks: S 1/4 CORNER - FOUND 1/2" REBAR W/ YELLOW CAP #8505

INSIDE 2" STEEL PIPE, 4" DEEP. STEEL FENCE POST 6" SOUTH OF CORNER

NO CORNER CERTIFICATE PREVIOUSLY RECORDED

PLAN - VIEW

(Show a minimum of three reference ties to durable physical objects, relevant monuments and physical conditions recovery of the corner.)



I hereby certify that the survey work was completed and this certificate was prepared by me or under my direct personal supervision and that I am a duly registered land surveyor under the laws of the state of Iowa.



Wendell J. Lupkes 1-26-06
IOWA L.L.S. NO. 12088

List Corners to be Indexed

| Corners | Section | Twp | Range |
|---------|---------|-----|-------|
| S 1/4 | 9 | 88 | 12 |



VJ Engineering
1501 Technology Parkway
Cedar Falls, Iowa - 319-266-5829

SECTION CORNER
REFERENCE TIES

Scale
NONE
drawn by
MAK
date
1/19/06