

INDEX

BLACK HAWK COUNTY, IOWA:SS

FEE BOOK # 2006 29763

PROOF

FILED FOR RECORD JUN 14 2006 AT 10:00A. M. FEE 1-5.00-1.00/

COMPARED

Jeffrey P. Helland

BLACK HAWK COUNTY RECORDER

HELLAND ENGINEERING & SURVEYING LTD

Jeffrey P. Helland, 1107 Technology Parkway, Cedar Falls, Iowa 50613-6951, (319)-266-0161

UNITED STATES PUBLIC LAND SURVEY CORNER CERTIFICATE
OFLAND SURVEY MONUMENTS SITUATED IN SECTION NO. 9, TOWNSHIP NO. 88 NORTH, RANGE
NO. 12 WEST OF THE FIFTH PRINCIPAL MERIDIAN, BLACK HAWK COUNTY, IOWA.

PREVIOUSLY RECORDED IN _____

(SHOW REASON FOR PREPARING THIS CERTIFICATE, THE EVIDENCE AND DETAILED PROCEDURES USED IN ESTABLISHING THE
CORNER POSITIONS AND MONUMENTATION FOUND OR PLACED.)

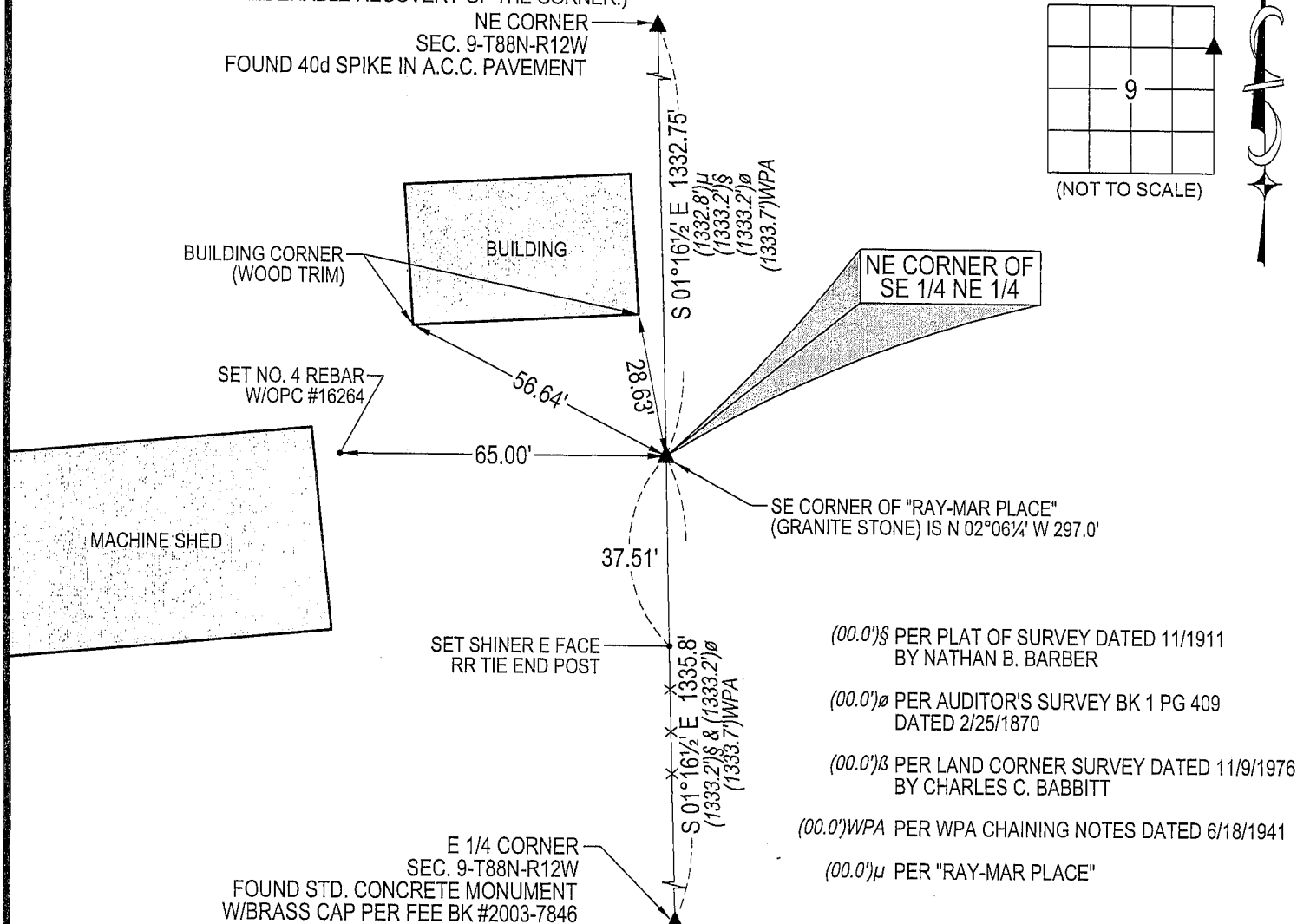
MONUMENT DESCRIPTION AND REMARKS:

NO USPLSCC ON FILE.

SURVEY COMPLETED IN THE NE 1/4 OF SEC. 9-T88N-R12W AND NW 1/4 SEC. 10-T88N-R12W.

NE CORNER OF SE 1/4 NE 1/4: AUDITOR'S SURVEY BK 1 PG 409 DATED 2/25/1870 SHOWS DISTANCE
MEASURED BUT DOES NOT STATE WHAT IS AT CORNER. AUDITOR'S SURVEY BK 1 PG 652 DATED 10/17/1884
CALLS FOR [STONE]. PLAT OF SURVEY DATED 11/1911 BY NATHAN B. BARBER CALLS FOR [FOUND STONE].
WPA CHAINING NOTES DATED 6/18/1941 CALLS FOR [NIGGERHEAD STONE]. STARTED PROBING FOR STONE
TO A DEPTH OF 3.5'± IN A 5'±Ø AREA AT CALCULATED POSITION. FOUND LIMESTONE (0.6'± TOP VIEW) 3.8'
NORTH OF CALCULATED POSITION, DID NOT ACCEPT AS CORNER. SET NO. 4 REBAR W/OPC #16264 ON A LINE
BETWEEN THE NE CORNER OF SEC. 9 AND THE E 1/4 CORNER OF SEC. 9 AND 297.0' SOUTH OF A FOUND 6"Ø
PINK GRANITE STONE @ THE SE CORNER "RAY-MAR PLACE", (SAID GRANITE STONE IS 4.3' WEST OF LINE
BETWEEN SAID NE COR. & E 1/4 COR).

PLAN VIEW

(SHOW A MINIMUM OF THREE REFERENCE TIES TO DURABLE PHYSICAL OBJECTS, RELEVANT MONUMENTS AND PHYSICAL
CONDITIONS THAT WILL ENABLE RECOVERY OF THE CORNER.)

(BEARINGS ARE BASED UPON GEODETIC NORTH)

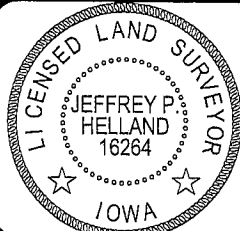


HELLAND ENGINEERING & SURVEYING, LTD.

1107 Technology Parkway
Cedar Falls, Iowa 50613-6951
(319)-266-0161SHINER = 8D NAIL & 1 15/16"Ø METAL SHINER
OPC = PLASTIC CAP (O=ORANGE, R=RED, Y=YELLOW)

(00') RECORDED AS

FILE NAME: 06-191C2.DWG

I hereby certify that this land surveying document was prepared
and the related survey work was performed by me or under my
direct personal supervision and that I am a duly licensed Land
Surveyor under the laws of the State of Iowa.*Jeffrey P. Helland* 6/7/06
Jeffrey P. Helland
License Number 16264
My license renewal date is December 31, 2007.
All pages or sheets are covered by this seal except:

LIST CORNERS TO BE INDEXED

CORNER	SECTION	TOWNSHIP	RANGE
NE CORNER SE 1/4 NE 1/4	9	88N	12W